



Sold



14 Stow Place, Watson

The One You've Been Waiting For

FIND.




Nestled at the end of a quiet cul-de-sac in a leafy, family-friendly pocket of Watson, this charming single-level home offers space, light and a functional floorplan. Resting on a generous flat block of 552sqm, it's a perfect setting for families seeking both comfort and convenience, only moments from schools, shops and Canberra's bustling inner north.

LOVE.

Freshly updated with new carpet and paint, this home blends retro charm with modern touches. A choice of two living spaces and a separate dining area ensures flexibility for entertaining or family living. The large kitchen, cool retro bathroom and separate toilet reflect character and practicality, while the oversized laundry and storage shed add convenience.

LIVE.

Positioned in one of Watson's most sought-after enclaves, enjoy a lifestyle where community and convenience meet. Close to Majura Primary, Dickson College and walking distance to Watson shops, this location is perfect for families. With quick access to Canberra City,

3  1  0 

FOR SALE
\$900,000+

AGENTS

Eoin Ryan-Hicks
0424 042 419
eoin.ryan-hicks@ljhooker.com.au

Tim Russell
0416 087 834
tim.russell@ljhooker.com.au

AGENCY

LJ Hooker Kippax
(02) 6255 3888

All information contained therein is gathered from relevant third parties sources.
We cannot guarantee or give any warranty about the information provided.
Interested parties must rely solely on their own enquiries.

 **LJ Hooker**

Mount Majura walking trails and light rail, you'll enjoy seamless connectivity to work, nature and play.

ABOUT THE AREA

Local Transport:

- Close to light rail and frequent buses to the City
- Easy access to Majura Parkway and Federal Highway

Shopping & Dining:

- Watson Shops & Farmers Markets
- Dickson shopping and dining precinct
- Canberra Centre within 10 minutes

Schools:

- Majura Primary School
- Dickson College
- Nearby childcare and early learning centres

OVERVIEW:

- 3 bedrooms all with built-in robes
- Freshly painted and new carpet throughout
- Two living areas plus separate formal dining
- Spacious kitchen with great storage
- Bathroom with separate toilet
- Huge laundry
- Reverse-cycle heating & cooling system
- Storage shed

RATES/SIZE:

- Rates: \$4,554 p.a approx.
- Land Tax: \$9,282 p.a approx.
- Block size: 552sqm approx.
- House size: 108sqm approx.
- EER: 1.0

All information contained herein is gathered from sources we consider to be reliable. However, we cannot guarantee or give any warranty about the information provided. Interested parties must solely rely on their own enquiries.

MORE DETAILS

Property ID	1HTTF9U
Property Type	House
House Size	102 m2
Land Area	552 m2
EER	1

Eoin Ryan-Hicks 0424 042 419

Franchise Owner | Sales Manager | Licensed Agent ACT & NSW |
Eoin.ryan-hicks@ljhooker.com.au

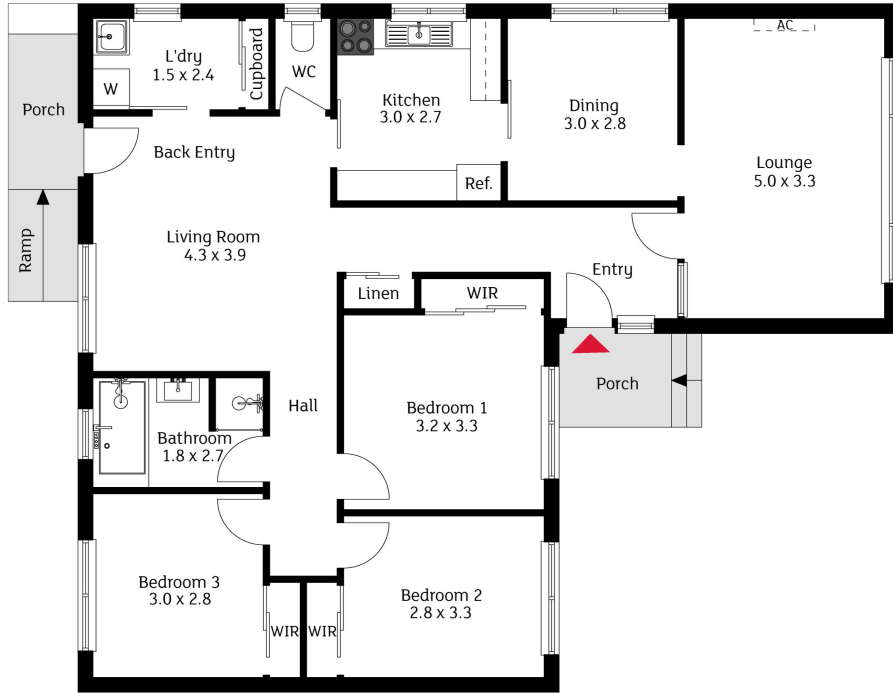
Tim Russell 0416 087 834

Principal | Franchise Owner of LJ Hooker Kaleen |
tim.russell@ljhooker.com.au

LJ Hooker Kippax (02) 6255 3888

Cnr Luke Street & Hardwick Crescent, HOLT ACT 2615
kippax.ljhooker.com.au | kippax@ljhooker.com.au





The floor plan is not to scale; measurements are indicative and in metres. Exterior elements are not in position. Plans should not be relied on. Interested parties should make and rely on their own enquiries.

14 Stow Place, Watson



All information contained therein is gathered from relevant third parties sources.
 We cannot guarantee or give any warranty about the information provided.
 Interested parties must rely solely on their own enquiries.

