



15/35 Tay Street, Watson

2 1 1

A Home That Feels Warm, Welcoming and Easy to Enjoy

Auction Location: On-Site

Auction 23 May unless sold prior

There is an immediate sense of comfort about this home from the moment you step inside. Beautifully maintained and set amongst established trees, it has a warm, inviting feel that makes it easy to imagine settling in and enjoying straight away. Peaceful and private, it offers a lovely balance of everyday comfort and lifestyle convenience in one of Watson's most popular pockets.

The layout is practical without losing its sense of space, with two good-sized bedrooms, a generous bathroom, and living areas that feel relaxed and easy to live in. Whether you are looking for a home to move straight into or a quality investment in a sought-after location, this is a property that simply makes sense.

- Warm and welcoming home in a peaceful leafy setting
- Two good-sized bedrooms
- Generous bathroom
- Comfortable layout with an easy sense of space
- Beautifully maintained and ready to enjoy

FOR SALE

Price guide above \$449,000

AGENTS

Chris Atlee
0422 974 081
chris.atlee@ljhdickson.com.au

Tama Hodgson
0416 361 221
tama.hodgson@ljhdickson.com.au

AGENCY

LJ Hooker Dickson
(02) 6257 2111

All information contained therein is gathered from relevant third parties sources.
We cannot guarantee or give any warranty about the information provided.
Interested parties must rely solely on their own enquiries.

LJ Hooker

- Established trees creating privacy and a lovely outlook
- Ideal for owner-occupiers and investors alike
- Close to local shops, walking trails and farmers markets
- Easy access to the city and approximately 20 minutes to the airport

MORE DETAILS

Property ID 1DWY6VF92
Property Type Apartment
EER 6

Chris Atlee 0422 974 081

| chris.atlee@ljhdickson.com.au

Tama Hodgson 0416 361 221

| tama.hodgson@ljhdickson.com.au

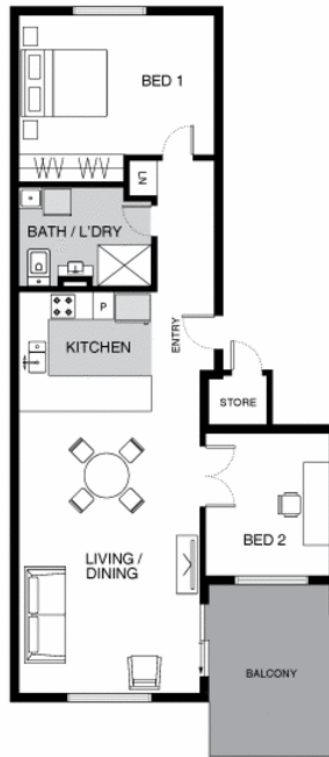
LJ Hooker Dickson (02) 6257 2111

36 Woolley Street, DICKSON ACT 2602

dickson.ljhooker.com.au | info@ljhdickson.com.au



Floor Plan



THIS FLOORPLAN IS INDICATIVE ONLY. DIMENSIONS ARE APPROXIMATE. ALL INFORMATION CONTAINED IS GATHERED FROM SOURCES WE BELIEVE TO BE RELIABLE. WE CANNOT GUARANTEE ITS ACCURACY AND INTERESTED PARTIES SHOULD RELY ON THEIR OWN ENQUIRIES.

 **LJ Hooker** Dickson

15/35 Tay Street, Watson

All information contained therein is gathered from relevant third parties sources.
We cannot guarantee or give any warranty about the information provided.
Interested parties must rely solely on their own enquiries.

 **LJ Hooker**