

Watson, 15/28 Beechworth Street

Stylish, Spacious & Serene

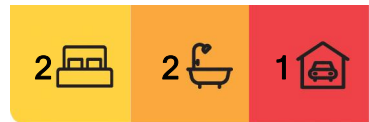
Combining urban convenience with natural beauty, this apartment offers an unmatched lifestyle in one of Canberra's most desirable suburbs. Welcome to Unit 15/28 Beechworth Street, a modern 2-bedroom, 2-bathroom apartment nestled on the in the highly sought-after Norrebro estate, in the peaceful suburb of Watson. Perfect for first-home buyers, investors, or those seeking a balance between nature and convenience, this beautifully designed home offers the best of contemporary living.

Boasting a light-filled, north-facing layout with lush green outlooks, this property features a seamless open-plan living and dining area flowing effortlessly onto a large private balcony-ideal for morning coffee or evening relaxation. The sleek kitchen, equipped with premium Smeg appliances, an integrated dishwasher, and ample storage, is a true culinary haven.

The master suite impresses with a generous walk-through wardrobe and a stylish ensuite, while the second bedroom includes a built-in wardrobe and sits conveniently near a



Disclaimer: All information contained therein is gathered from relevant third parties sources. We cannot guarantee or give any warranty about the information provided. Interested parties must rely solely on their own enquiries.



For Sale
Please Call

View
ljhooker.com.au/HP034F8H

Contact
Kathy Komar
0455 891 351
kkomar@ljhbelconnen.com.au

EER ★★★★★★

LJ Hooker Belconnen
(02) 6251 1477

second full bathroom. Additional thoughtful features include a separate walk-in laundry room, two reverse-cycle air conditioners for year-round comfort, and two secure basement car parks with storage.

Key Features:

- * Two spacious bedrooms, main with walk-in robe and ensuite
- * Open plan living and dining with access to a large, sunlit balcony
- * Designer kitchen with high-end Smeg appliances and integrated dishwasher
- * Two modern bathrooms plus a separate laundry room
- * Two reverse-cycle split system air conditioners
- * One secure basement car spaces with storage

Norrebro Estate & Location Highlights:

- * Beautifully maintained internal gardens, parks, and picnic areas
- * On-site café and community facilities
- * Minutes to Watson Village and local farmers' markets
- * Quick access to the Mount Majura Nature Reserve
- * Short drive or light rail trip to Canberra City Centre

- * Living Size: 84sqm
- * Balcony Size: 24sqm
- * Rates: \$1,781 p.a.
- * Strata: \$5,632 p.a.
- * Land Tax: \$2,120 p.a. (investors only)

Disclaimer:

All information contained herein is gathered from external sources we consider to be reliable. However, we cannot guarantee or give any warranty about the information provided. Interested parties must solely rely on their own enquiries and satisfy themselves in all respects.

More About this Property

Property ID	HP034F8H
Property Type	Apartment
House Size	84 m2
EER	6

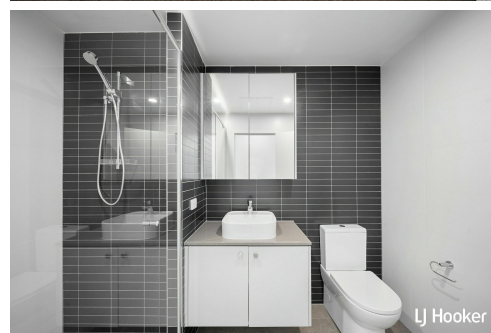
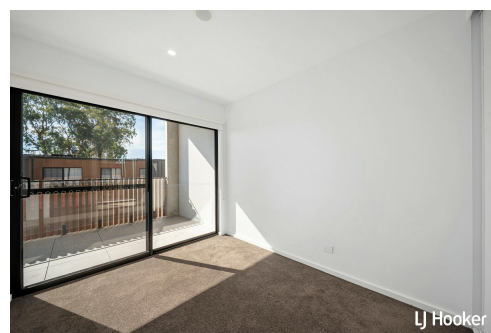
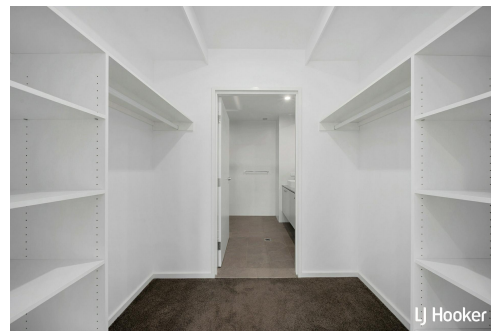
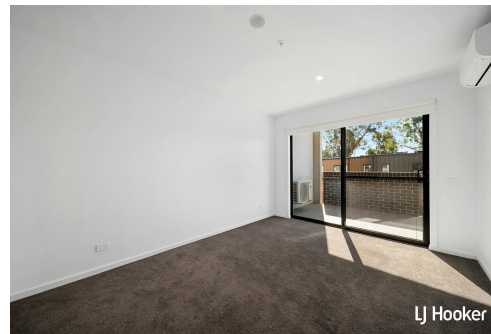
Kathy Komar 0455 891 351

Sales Agent | kkomar@ljhbelconnen.com.au

LJ Hooker Belconnen (02) 6251 1477

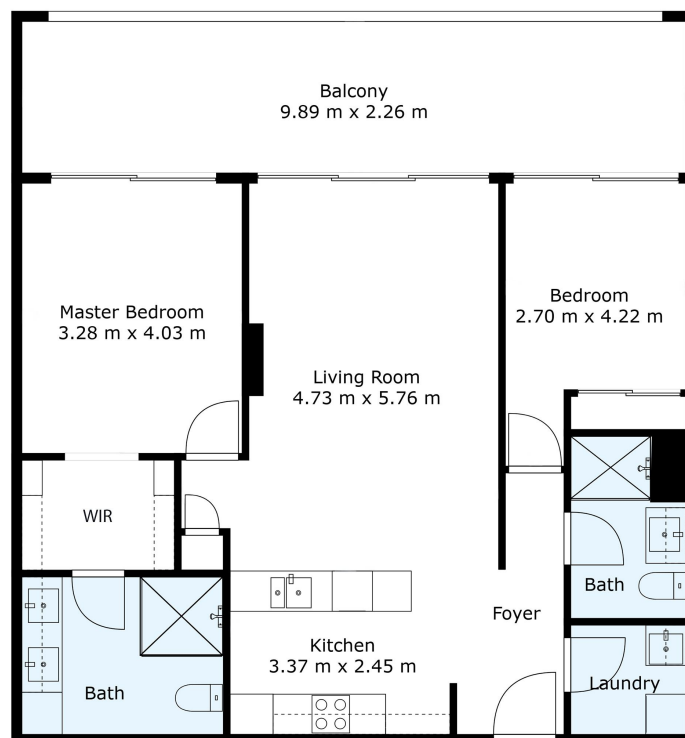
Shop 9, 21 Benjamin Way, BELCONNEN ACT 2617

belconnen.ljhooker.com.au | belconnen@ljhbelconnen.com.au



LJ Hooker Belconnen
(02) 6251 1477

Disclaimer: All information contained therein is gathered from relevant third parties sources. We cannot guarantee or give any warranty about the information provided. Interested parties must rely solely on their own enquiries.


15/28 Beechworth Street, Watson


Disclaimer: Plans are indicative only and should be checked by the prospective purchaser. Plans shown are for presentation purposes and are not part of any legal document. All measurements and figures are approximate. The information herein is gathered from sources we believe to be reliable.