



Waterford West, 16 William Street

THE WOW YOU'VE BEEN WAITING FOR

This stunning home is the gift that keeps on giving... you have to see it to believe it! This truly inviting, impressive family home encompasses everything you could wish for & more! With the hard work already done, you simply get to move in & enjoy the space & charm this property has to offer. Set on a substantial, fully fenced, 2-street frontage, 2023m2 site. With 5 bedrooms, 4 bathrooms and a gorgeous resort-style in-ground pool, you will feel like you are on holiday in your very own home. Add to all of that, the extensive sheds . You have the option to work from this sanctuary too... you better get in quick! The list of features is infinite...here is just a sneak peek of what's on offer:

The list of features is infinite...here is just a sneak peek of what's on offer:

* 2 storey Colonial style home with 238m2 of internal space - impressive street



Disclaimer: All information contained therein is gathered from relevant third parties sources. We cannot guarantee or give any warranty about the information provided. Interested parties must rely solely on their own enquiries.

SOLD

5 

4 

8 

For Sale

Offers Over \$899,000

View

ljhooker.com.au/1VE9GRF

Contact

Trina Wilson

0427 188 500

trina.wilson@ljhbeenleigh.com.au

Sonia Deighton

0477 889 788

pa1@ljhbeenleigh.com.au

LJ Hooker Beenleigh
(07) 3807 7900

appeal with Colonial windows, stone clad feature entrance wall & the classic Aussie dream 'white picket fence'.

* Beautifully landscaped garden welcomes you as you enter the front gate - with plenty of off-street parking, single carport & drive-through access to your backyard.

* Entering the home, you are greeted with a stunning extra wide entry way with quality, timber-look tiled flooring throughout, leading you through to the first level - high ceilings create that feeling of even more space.

* Bright & vast open plan living - featuring fireplace, roller blinds, ceiling fan, downlights & air-conditioner.

* Large, modern open plan kitchen/dining, with the stunning wood-look tiles & downlights continuing through the space.

* A true entertainer's kitchen - with an abundance of cupboard, draw & bench space, large island bench, dishwasher, water filter tap, double stainless steel sink, subway feature tiles & separate coffee/bar station. * Convenient spacious office off the living area - separate external access & ceiling fan, perfect for the home business or a 5th bedroom!

* Massive laundry with floor-to-ceiling tiles & external access + extra bathroom with huge shower & separate toilet - convenient for larger families/guests with bonus built-in dog door.

* Wooden staircase leading to the second level - with feature lighting & extra under-stair storage.

* Generous additional family living area at the top of the internal stairs - fully carpeted, ceiling fan & feature dropped ceiling - great space for teenagers.

* Double doors lead into the first fabulous master wing - feature VJ panel wall, ceiling fan, a walk-in wardrobe to melt any heart & ensuite with floor-to-ceiling tiles, niches, towel warmer & stone-top vanity - not only spacious but feels like your own little country retreat when looking out onto the horse paddocks across the road.

* Grand walk-way through to your main bathroom - extra storage & separate powder room including toilet, wash basin & subway feature tiles.

* Stunning main bathroom does not disappoint either with floor to ceiling tiles, wall-hung vanity, free-standing bathtub & separate spacious shower - quality fixtures & fittings to top it off!

* 2 king size bedrooms upstairs are both fully carpeted - roller blinds, ceiling fans & built in wardrobes with Colonial feature windows.

* If all of this space wasn't enough, you have a second separate master wing - double built-ins, ceiling fan, extra nook perfect for a study space or nursery + ensuite, with the same level of quality finishes; wall-hung vanity, floor-to-ceiling tiles, niches & toilet.

* If hosting guests is a favourite pastime, then you will definitely get excited about the expansive downstairs entertaining area - featuring sliding doors across the whole wall for effortless entertaining & views of the pool.

* Another WOW factor - the breath-taking, paved resort-style pool with natural rocks, a waterfall & two depth levels for the smaller kids - Christmas Day here will just be magical!

* Double gate access through the carport, to your massive 2023m2 block - the convenience just keeps adding up!

* Access your multitude of sheds from your second street access from Wharf St - what an opportunity for your at-home business.



LJ Hooker Beenleigh
(07) 3807 7900

Disclaimer: All information contained therein is gathered from relevant third parties sources. We cannot guarantee or give any warranty about the information provided. Interested parties must rely solely on their own enquiries.

* No matter the toys you have, this property has you covered - wide concrete driveway leads to the concrete triple connected carports, 12mx7m & 6x6m sheds + separate double carport with pebbled turn-around space.

Location is key & it doesn't get more convenient than this...Waterford Plaza 600m walk; Tygum Park at the end of your street; Waterford West SS 1km; Waterford SS 1.7km; Loganlea SHS 3.3km & Marsden SHS 3.1km. You are also within minutes to the M1 heading North or South... yet within this home you can feel a million miles away.

So much potential for combining all your worlds into one. You can have your luxury, Hamptons-feel home living while feeling like you're a world away, though you're just a stone's throw away from your business or projects. As you can see, properties of this stature & elegance do not come along very often & you really need to see it to appreciate the countless features it has to offer… it truly is your own oasis. Do yourself a favour & view today... you could be the lucky new owner & the envy of everyone!

More About this Property

Property ID	1VE9GRF
Property Type	House
Land Area	2023 m²
Including	Air Conditioning

Trina Wilson

Sales Manager | trina.wilson@ljhbeenleigh.com.au

Sonia Deighton

Sales Consultant | pa1@ljhbeenleigh.com.au

LJ Hooker Beenleigh (07) 3807 7900

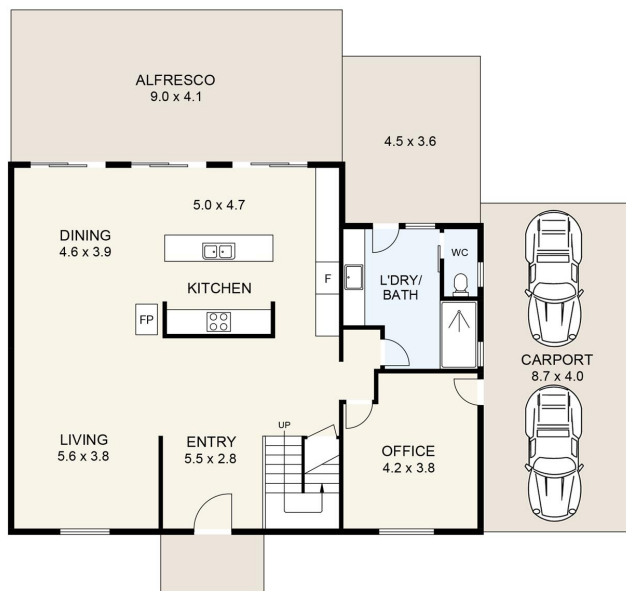
14-16 James Street, BEENLEIGH QLD 4207

beenleigh.ljhooker.com.au | bso@ljhbeenleigh.com.au



Disclaimer: All information contained therein is gathered from relevant third parties sources. We cannot guarantee or give any warranty about the information provided. Interested parties must rely solely on their own enquiries.

LJ Hooker Beenleigh
(07) 3807 7900



Floor Plan

16 WILLIAMS STREET



SCALE UNIT IS IN METRES

INTERNAL : 238m²
EXTERNAL : 93m²

All measurements are approximate and for illustration purposes only.
It should not be considered 100% accurate. Interested parties should
rely on their own enquiries.