



## Waterford, 1/34 Jasmina Parade

### Low Maintenance, Easy Living

Looking for a home to enjoy without the hassle of lots of maintenance? Or perhaps a new investment to start your portfolio? Then you will not want to look past this super tidy, lowset, 3 bedroom, brick duplex in a lovely pocket of Waterford. With its own pet friendly enclosed courtyard & great homely feel you will be disappointed if you miss out on making this one yours!

Featuring:

- Fully fenced front courtyard - perfect for the pets & your early morning cuppa!
- Great sized functional kitchen - gas cooktop, dishwasher & plenty of cupboard space
- Open plan living/dining room with air con. & access to outdoor area - fully tiled for easy cleaning
- 2 bedrooms that let in good light - both with built in robes & carpeted for comfort
- Spacious bathroom with corner vanity & tiled shower



**Disclaimer:** All information contained therein is gathered from relevant third parties sources. We cannot guarantee or give any warranty about the information provided. Interested parties must rely solely on their own enquiries.

**SOLD**

2

1

1

**For Sale**

Offers Over \$399,000

**View**

[ljhooker.com.au/1VJNGRF](http://ljhooker.com.au/1VJNGRF)

**Contact**

**Trina Wilson**

0427 188 500

[trina.wilson@ljhbeenleigh.com.au](mailto:trina.wilson@ljhbeenleigh.com.au)

**Sonia Deighton**

0477 889 788

[sales2@ljhbeenleigh.com.au](mailto:sales2@ljhbeenleigh.com.au)

**LJ Hooker Beenleigh**  
**(07) 3807 7900**

- Single lock-up garage with internal access for ease of entry - laundry also located here
- Water tank to service your gardens
- Low maintenance cobblestone yard - more time for you to spend on the things you love

Located in the picturesque suburb of Waterford you have numerous parks & walkways to enjoy as well as access to a great shopping complex at Holmview. Transport is also very convenient with both Bethania & Edens Landing Train stations just 2.6km away. For families you have a choice of schooling options which include Canterbury College 750m, Edens Landing State School 1.9km, Waterford State School 3.2km & Bethania Lutheran Primary School 1.9km. Not to mention being just a short drive to the M1 highway.

This property simply stacks up whichever circumstance suits you best so be sure to get in quick to register your interest or it could become someone else's treasure!

## More About this Property

<b>Property ID</b>	1VJNGRF
<b>Property Type</b>	House
<b>Land Area</b>	97 m <sup>2</sup>

### Trina Wilson 0427 188 500

Sales Manager | [trina.wilson@ljhbeenleigh.com.au](mailto:trina.wilson@ljhbeenleigh.com.au)

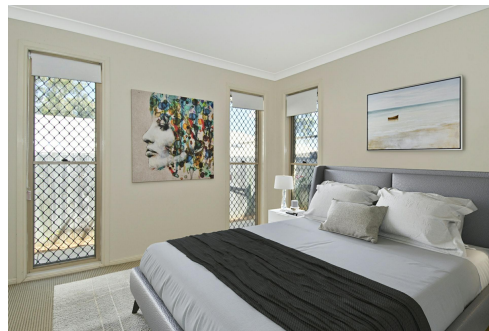
### Sonia Deighton 0477 889 788

Sales Consultant | [sales2@ljhbeenleigh.com.au](mailto:sales2@ljhbeenleigh.com.au)

### LJ Hooker Beenleigh (07) 3807 7900

14-16 James Street, BEENLEIGH QLD 4207

[beenleigh.ljhooker.com.au](http://beenleigh.ljhooker.com.au) | [bsa@ljhbeenleigh.com.au](mailto:bsa@ljhbeenleigh.com.au)



**LJ Hooker Beenleigh**  
**(07) 3807 7900**

**Disclaimer:** All information contained therein is gathered from relevant third parties sources. We cannot guarantee or give any warranty about the information provided. Interested parties must rely solely on their own enquiries.