



Waterford, 8 Gloucester Street

THE PERFECT FAMILY HOME IN WOODLANDS ESTATE!

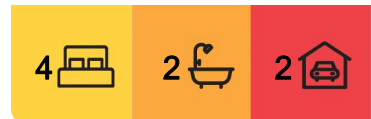
From the moment you step inside, the spacious hallway entrance & soaring 9ft ceilings will make you feel right at home. With a fantastic layout featuring multiple living spaces, a well-appointed kitchen & thoughtful inclusions throughout, this home has everything you've been searching for - & best of all, it's vacant & ready for you to move in!

Here's a snapshot of what's on offer:

- * Two separate living areas - front lounge with beautiful wood-look floors, downlights & ceiling fan, plus a second lounge/dining area with another ceiling fan for added comfort
- * Spacious open-plan kitchen, family & dining area - seamlessly flowing to the alfresco, making entertaining a breeze
- * Quality kitchen with plenty of storage - featuring a 4-burner gas cooktop, electric oven, dishwasher & loads of bench space to cook up a storm



Disclaimer: All information contained therein is gathered from relevant third parties sources. We cannot guarantee or give any warranty about the information provided. Interested parties must rely solely on their own enquiries.



For Sale
Mid to High \$700,000

View
ljhooker.com.au/1WHNGRF

Contact
Trina Wilson
0427 188 500
trina.wilson@ljhbeenleigh.com.au
Fraser Andersen
0413 505 128
sales2@ljhbeenleigh.com.au

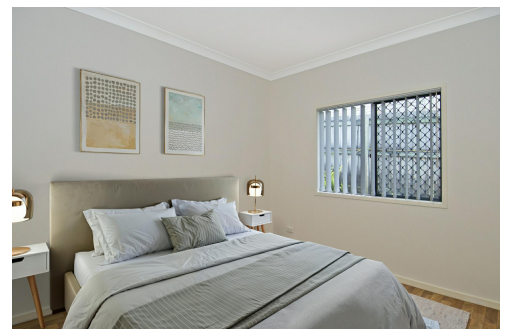
LJ Hooker Beenleigh
(07) 3807 7900

- * Generous master suite - positioned separately for privacy, complete with a walk-in robe & ensuite
- * Three additional bedrooms - all well-sized with new carpets & built-in robes
- * Main bathroom with separate bath & shower - plus a separate toilet for convenience
- * Internal laundry with external access - making chores easy & functional
- * Ducted air-conditioning throughout - a powerful 12kW Fujitsu system to keep you comfortable all year round
- * Private outdoor alfresco area - paved & complete with ceiling fan & downlights, the perfect spot to unwind
- * Fully fenced backyard with established lawns & gardens - including a slimline garden shed & a rainwater tank servicing the toilet & laundry
- * Remote double lock-up garage - offering secure parking & internal access
- * Extra features throughout - gas hot water system, Eufy security camera system, security screens & side walkway access for easy maintenance

Perfectly positioned in the sought-after Woodlands Estate, you're just a short stroll from local parks & public transport, with a bus stop only 270m away. Both private & public schools are close by, plus you're only minutes to Beenleigh (5.9km) & Bethania (3.3km) Train Stations, with direct access to the M1 (7.2km) & Logan Motorway (11km) for an easy commute.

Holmview Shopping Complex is just around the corner, offering everything from Woolworths, bakery, hairdressers, newsagents & sensational local restaurants.

This is the one you've been waiting for - don't miss your chance to secure it before someone else does!



More About this Property

| | |
|----------------------|---------|
| Property ID | 1WHNGRF |
| Property Type | House |
| Land Area | 480 m2 |

Trina Wilson 0427 188 500
 Sales Manager & Co-Owner | trina.wilson@ljhbeenleigh.com.au
Fraser Andersen 0413 505 128
 Licenced Real Estate Agent | sales2@ljhbeenleigh.com.au

LJ Hooker Beenleigh (07) 3807 7900
 14-16 James Street, BEENLEIGH QLD 4207
 beenleigh.ljhooker.com.au | bso@ljhbeenleigh.com.au

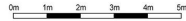


LJ Hooker Beenleigh
(07) 3807 7900

Disclaimer: All information contained therein is gathered from relevant third parties sources. We cannot guarantee or give any warranty about the information provided. Interested parties must rely solely on their own enquiries.



8 GLOUCESTER STREET



SCALE UNIT IS IN METRES

All measurements are approximate and for illustration purposes only. It should not be considered 100% accurate. Interested parties should rely on their own enquiries.

INTERNAL : 145m²
EXTERNAL : 27m²