



Waterford, 2/32 Jasmina Parade

Fresh, Stylish & Vacant - No Body Corp Fees!

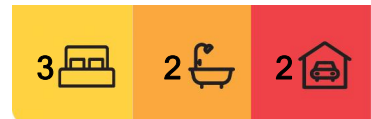
Welcome to 2/32 Jasmina Pde, Waterford - a beautifully presented lowset, brick & tile duplex that combines low-maintenance living with surprising space, comfort & value. With no body corporate fees (just shared insurance), this is the ideal opportunity for first home buyers, downsizers or investors wanting a move-in ready gem in a peaceful pocket.

Here's what's on offer:

- * Freshly painted throughout - giving the entire home a light, modern feel the moment you walk in
- * Generous open-plan layout - wood-look flooring in the high traffic areas for easy care & long-lasting style
- * 3 well-sized carpeted bedrooms, all with ceiling fans & built-ins - perfect for families or guests, with plenty of room to relax
- * Main bathroom with separate shower & bathtub - designed with family convenience in mind



Disclaimer: All information contained therein is gathered from relevant third parties sources. We cannot guarantee or give any warranty about the information provided. Interested parties must rely solely on their own enquiries.



For Sale
Please Call

View
ljhooker.com.au/1WU9GRF

Contact
Trina Wilson
0427 188 500
trina.wilson@ljhbeenleigh.com.au

Fraser Andersen
0413 505 128
sales2@ljhbeenleigh.com.au

LJ Hooker Beenleigh
(07) 3807 7900

- * Separate toilet - extra privacy & functionality for everyday living
- * Master bedroom with ensuite & triple built-in robe - your own private haven for restful nights
- * Air-conditioned lounge area - ideal for keeping cool while enjoying movie nights or family time
- * Kitchen with ample bench space & functional layout - making meal prep a breeze while staying connected to the living area
- * Tiled internal laundry - conveniently positioned with access to the clothesline
- * Single lock-up garage with internal access - secure & practical
- * Low maintenance yard with paved entertainment area - with fencing already in place, only a gate or front section is needed to be fully pet-ready

No body corp fees to worry about here - just shared insurance with your neighbour for hassle-free ownership. This duplex is perfectly located within easy reach of Canterbury College, Waterford State School, Holmview Central Shopping Centre, local parks, transport & the M1 for easy commuting between Brisbane & the Gold Coast.

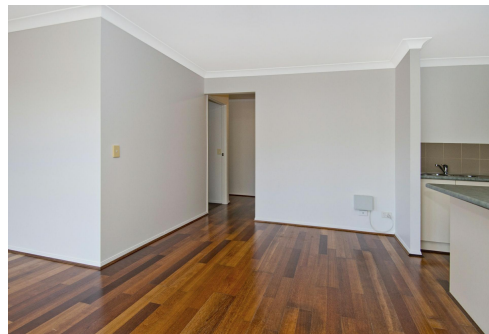
This one ticks all the boxes for lifestyle, location & long-term value. Don't miss your chance - add the next open home to your calendar before it's SOLD!

More About this Property

Property ID	1WU9GRF
Property Type	DuplexSemi-detached
House Size	136 m2
Land Area	236 m2
Including	Air Conditioning Courtyard Dishwasher Floorboards Built-in-Robes Secure Parking

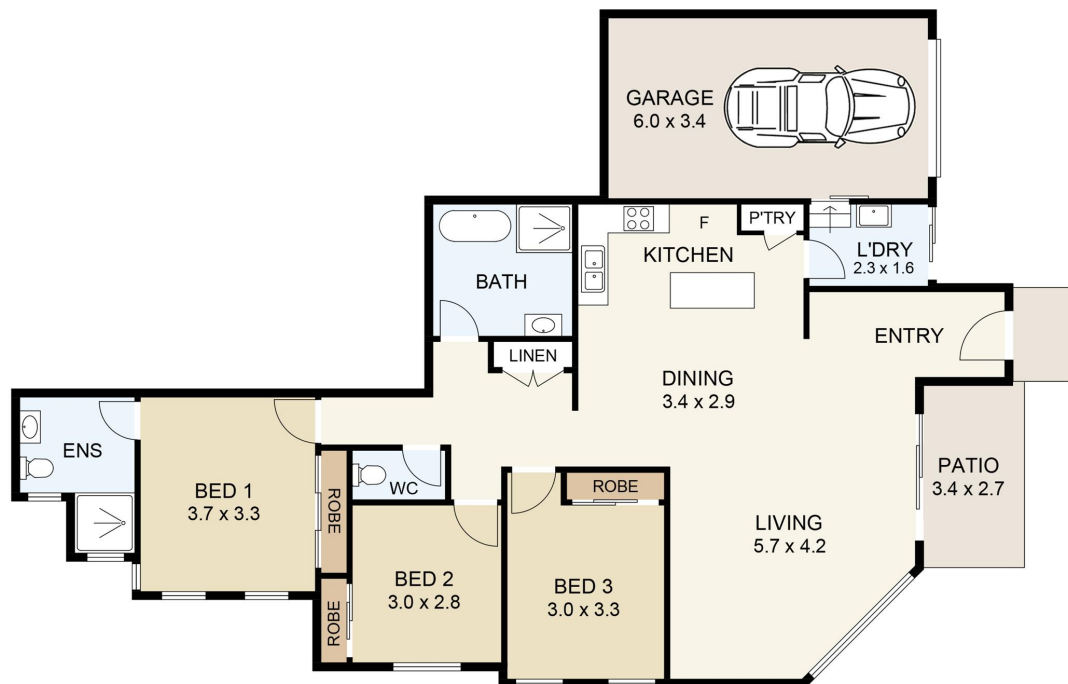
Trina Wilson 0427 188 500
Sales Manager & Co-Owner | trina.wilson@ljhbeenleigh.com.au
Fraser Andersen 0413 505 128
Licenced Real Estate Agent | sales2@ljhbeenleigh.com.au

LJ Hooker Beenleigh (07) 3807 7900
14-16 James Street, BEENLEIGH QLD 4207
beenleigh.ljhooker.com.au | bso@ljhbeenleigh.com.au



LJ Hooker Beenleigh
(07) 3807 7900

Disclaimer: All information contained therein is gathered from relevant third parties sources. We cannot guarantee or give any warranty about the information provided. Interested parties must rely solely on their own enquiries.



Floor Plan

2/32 JASMINA PARADE



SCALE UNIT IS IN METRES

INTERNAL : 128m²
EXTERNAL : 12m²

All measurements are approximate and for illustration purposes only. It should not be considered 100% accurate. Interested parties should rely on their own enquiries.