



Waterford, 11A Outlook Drive

GENEROUS DUPLEX LIVING - NO BODY CORP FEES!

****For more detailed information about the property, including how to submit an offer & FAQs, simply make an enquiry & we'll send you a link with everything you need. The quickest way to access additional property details is through the link provided.****

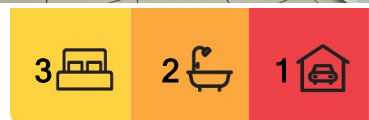
Choose the option that best suits your lifestyle! Nestled in a quiet pocket of the Woodlands Estate, this low-maintenance 3-bedroom, 2-bathroom duplex takes pride of place on a desirable corner block, offering tranquility while staying close to all the essentials. Perfect for first home buyers, investors or downsizers; you'll be surprised by what's on offer!

Key Features:

- * Spacious Living & Dining: Separate areas with a ceiling fan & air-conditioning for year-round comfort
- * Master Retreat: Generously sized master bedroom with air-conditioning, ensuite, & walk-in robe



Disclaimer: All information contained therein is gathered from relevant third parties sources. We cannot guarantee or give any warranty about the information provided. Interested parties must rely solely on their own enquiries.



For Sale
\$575,000 - \$625,000

View
ljhooker.com.au/1QK1GRF

Contact
Trina Wilson
0427 188 500
trina.wilson@ljhbeenleigh.com.au
Brianna Dobbie
0459 966 749
ea1@ljhbeenleigh.com.au

LJ Hooker Beenleigh
(07) 3807 7900

- * Two Additional Bedrooms: Both featuring built-in robes & ceiling fans
- * Modern Kitchen: Equipped with an electric oven, cooktop, dishwasher, breakfast bar, & ample storage
- * Well-Appointed Bathroom: Includes a separate bath & shower, with a standalone toilet for added convenience
- * Study Nook: Perfect for working from home or as a peaceful study space
- * Private Outdoor Living: Low-maintenance landscaping & an alfresco area for relaxing or entertaining
- * Secure Parking: Single-car garage with internal access & a conveniently located laundry
- * No Body Corporate Fees: More money in your pocket

Prime Location Highlights:

- * Holmview Central Shopping Centre: Just minutes away for all your daily needs
- * Close to Schools: Including Waterford State School, Bethania Lutheran Primary, & Canterbury College, making family life a breeze
- * Outdoor Recreation: Parks & green spaces, like Outlook Drive Park, are right on your doorstep
- * Easy Commuting: Less than 10 minutes to the M1, connecting you to Brisbane or the Gold Coast

This stylish & functional home is perfect for those seeking an easy, move-in-ready lifestyle. Don't miss your chance - contact us today to register your interest!

More About this Property

Property ID	1QK1GRF
Property Type	DuplexSemi-detached
Land Area	123 m ²
Including	Study Air Conditioning Dishwasher Built-in-Robes Secure Parking

Trina Wilson 0427 188 500

Sales Manager & Co-Owner | trina.wilson@ljhbeenleigh.com.au

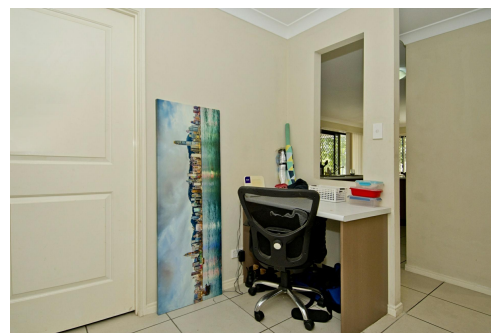
Brianna Dobbie 0459 966 749

Executive Assistant to Trina Wilson | ea1@ljhbeenleigh.com.au

LJ Hooker Beenleigh (07) 3807 7900

14-16 James Street, BEENLEIGH QLD 4207

beenleigh.ljhooker.com.au | bso@ljhbeenleigh.com.au



LJ Hooker Beenleigh
(07) 3807 7900

Disclaimer: All information contained therein is gathered from relevant third parties sources. We cannot guarantee or give any warranty about the information provided. Interested parties must rely solely on their own enquiries.