

Wasleys, 15 Annie Terrace

Open Cancelled - CONTACT AGENT

15 Annie Terrace Wasleys is situated on the main street of Wasleys and is one of the original homes to be built. This delightful home boasts a 4 bedroom, 2 bathroom floorplan on a desirable allotment of 1879m2 (approx.) with side access, a wealth of vehicle storage options, & a large backyard offering stunning views! With its roots stemming from 1930, after introducing a few more modern upgrades & renovations, the property has the potential to be an even more incredible home to a family, first home buyer, or even investor!

Property Features:

- * 4 generously sized bedrooms.
- * Bedroom 1 & 3 with built-in robes.
- * Ceiling fans in bedroom 1, 2, & 3.
- * Delightful 1900's style main bathroom.



Disclaimer: All information contained therein is gathered from relevant third parties sources. We cannot guarantee or give any warranty about the information provided. Interested parties must rely solely on their own enquiries.



For Sale
Best Offers by 10am 18/11/24 (USP)

View
ljhooker.com.au/1V2NG54

Contact
Matthew Nudo
0497 804 034
matthewn@ljhsales.com.au

Maigen Norman
0418 557 597
maigenn@ljhsales.com.au

LJ Hooker Gawler | Barossa
(08) 8522 3311

- * Modern 2nd toilet beside outdoor entertainment area.
- * Kitchen with updated cabinetry, appliances, & surface materials.
- * Original 1930's stove in kitchen.
- * Spacious walk-in pantry with cabinetry.
- * Lounge room with remote controlled split system & a wealth of space.
- * Atmospheric dining room flowing on from the lounge room.
- * Efficient laundry room with ample storage options.
- * Incredibly sized undercover entertainment space boasting home extension potential.
- * Original single garage with double doors opening to the carport.
- * Side gate with double doors which offers access to the second carport & shed.
- * 6m x 15m shed with manual roller door, power, & potential to store 2 vehicles.
- * Double carport extending off shed.
- * Large rear yard that is complemented by elegant views overlooking the nearby fields.
- * Efficient 6.6kw (approx.) solar panels.
- * 1900's inspired high ceilings, polished timber floors & freshly painted throughout.
- * Situated in the heart of Wasleys with access to Wasleys Primary School alongside multiple eateries & recreational facilities.
- * 20 minutes from Gawler providing an array of amenities.
- * Under 15 minutes from the Northern Expressway & under 1 hour from the Adelaide CBD.

If you are interested in this wonderful & exciting opportunity, please contact Matthew Nudo on 0497 804 034 or Maigen Norman on 0418 557 597 for any inquiries or to register your interest.

CT/ 5167/518

Land size / 1879m2 (approx)

Internal Living / 216m2 (approx.)

Year Built / 1930

All information provided has been obtained from sources we believe to be accurate, however, we cannot guarantee the information is accurate and we accept no liability for any errors or omissions (including but not limited to a property's land size, floor plans and size, building age and condition). Interested parties should make their own enquiries and obtain their own legal and financial advice. Should this property be scheduled for auction, the Vendor's Statement may be inspected at either of our two LJ Hooker Property Specialists Real Estate offices for 3 consecutive business days immediately preceding the auction and at the auction for 30 minutes before it starts. RLA 305453



LJ Hooker Gawler | Barossa
(08) 8522 3311

Disclaimer: All information contained therein is gathered from relevant third parties sources. We cannot guarantee or give any warranty about the information provided. Interested parties must rely solely on their own enquiries.

More About this Property

Property ID	1V2NG54
Property Type	House
House Size	216 m ²
Land Area	1879 m ²
Including	Air Conditioning Dishwasher Outdoor Entertaining Floorboards Built-in-Robes Fully Fenced Solar Panels Water Tank

Matthew Nudo 0497 804 034

Sales Specialist | matthewn@ljhsales.com.au

Maigen Norman 0418 557 597

Sales Specialist | maigenn@ljhsales.com.au

LJ Hooker Gawler | Barossa (08) 8522 3311

26 Adelaide Road, GAWLER SA 5118

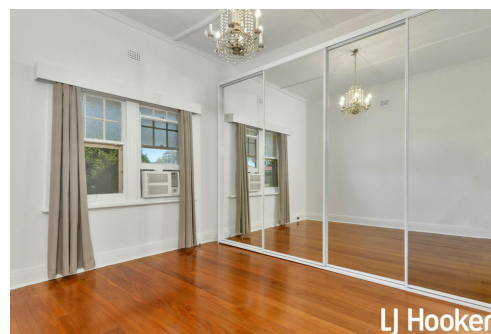
gawlerbarossa.ljhooker.com.au | gawler@ljhsupport.com.au



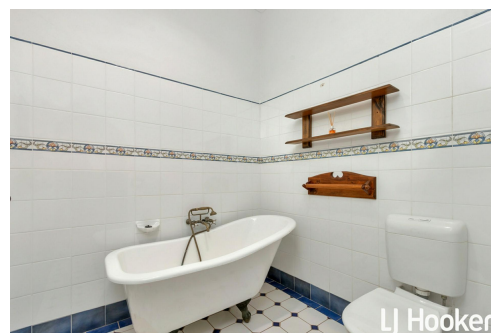
LJ Hooker



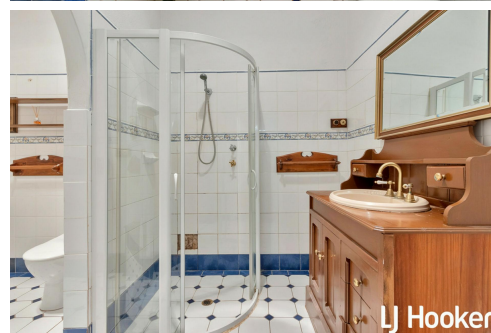
LJ Hooker



LJ Hooker



LJ Hooker



LJ Hooker



Disclaimer: All information contained therein is gathered from relevant third parties sources.

We cannot guarantee or give any warranty about the information provided. Interested parties must rely solely on their own enquiries.

LJ Hooker Gawler | Barossa
(08) 8522 3311

15 Annie Terrace,
WASLEYS



SITE PLAN
NOT TO SCALE

This Diagram is for information only. It is not intended to be used as a contract or a warranty. It is subject to change without notice.