



32/9 Goulburn Street, Warwick Farm

2 🏠 1 🚿 1 🚗

Smart Investment or First Home in Prime Location

FOR SALE
\$510,000

AGENTS

Amelle Ghassibe
0424 754 232
aghasibe@ljhfairfield.com.au

AGENCY

LJ Hooker Fairfield
(02) 9727 7766

Key Features:

- Open-plan living and dining filled with natural light
- Balcony with privacy blinds and unobstructed outlook
- Modern gas kitchen with stainless steel appliances
- Master bedroom with built-in robe
- Generous Second bedroom/study (3.5m x 2.2m) with built-in robe, perfect for guests, home office or nursery
- Internal laundry, air-conditioning & intercom
- Secure car space with storage cage
- Plenty of visitor parking
- Dual lift access on this level

Conveniently Located: (approx)

- 500m to Liverpool Hospital
- 750m to Westfield Liverpool
- 1km to Liverpool Train Station

Whether you're entering the market, looking to downsize, or seeking a

All information contained therein is gathered from relevant third parties sources.
We cannot guarantee or give any warranty about the information provided.
Interested parties must rely solely on their own enquiries.



strong rental return, this property delivers low-maintenance living in a sought-after location.

DISCLAIMER: We have in preparing this information used our best endeavours to ensure that the information contained therein is true and accurate however, accept no responsibility and disclaim all liability in respect of any errors, inaccuracies or misstatements contained herein. Prospective buyers should make their own enquiries to verify the information contained herein

MORE DETAILS

Property ID 142SF99
Property Type Unit
House Size 82 m2

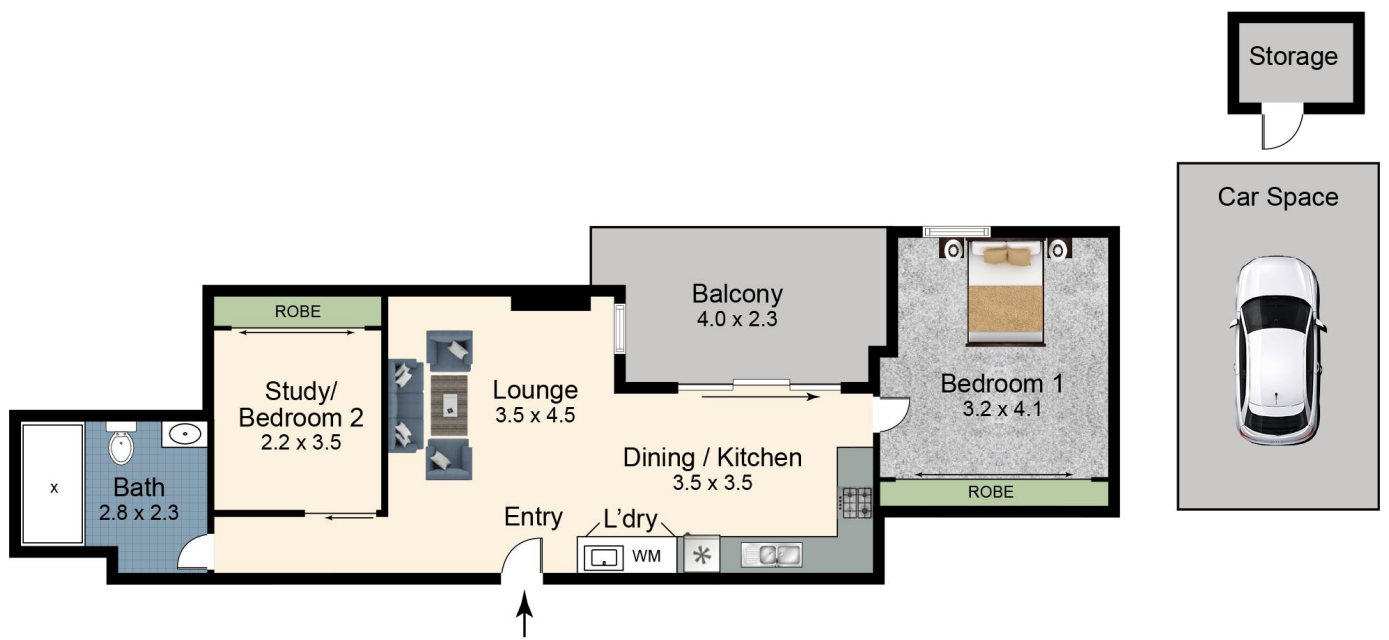
Amelle Ghassibe 0424 754 232

Residential Sales | aghasibe@ljhfairfield.com.au

LJ Hooker Fairfield (02) 9727 7766

195b The Boulevarde, FAIRFIELD HEIGHTS NSW 2165
fairfield.ljhooker.com.au | fairfield@ljhfairfield.com.au





**32/9 Goulburn St
Warwick Farm 2170**

Scales in metres. Indicative only. Dimensions are approximate. All information contained here in is gathered from sources we believe to be reliable. However we cannot guarantee its accuracy and interested persons should rely on their own enquires.

 **LJ Hooker**