



16/57-59 Lachlan Street, Warwick Farm

Stylish & Spacious 2-Bedroom Apartment with Modern Finishes

This beautifully presented apartment offers the perfect blend of style, space, and convenience in the heart of Warwick Farm. With a light-filled open-plan design and quality finishes throughout, it's ideal for comfortable living or a smart investment.




Property Features:

- 2 spacious bedrooms, master with ensuite & balcony access
- 2 modern bathrooms with quality fittings
- Contemporary kitchen with gas cooking & stainless steel appliances
- Open-plan living and dining filled with natural light
- Generous balcony ideal for entertaining
- Split-system air conditioning
- Secure car space

Located close to local shops, transport, schools, and amenities, this apartment offers a low-maintenance lifestyle in a highly convenient location.

- Approx. 800m to Westfield Liverpool
- Approx. 1.6km to Liverpool Train station

All information contained therein is gathered from relevant third parties sources. We cannot guarantee or give any warranty about the information provided. Interested parties must rely solely on their own enquiries.

2  2  1 

FOR SALE

For Sale: \$475,000 - \$520,000

VIEW

Sat 20th Jun @ 2:30PM - 3:00PM

AGENTS

Elie Hosni
0489 046 251
eliehosni.bl@ljhooker.com.au

Larissa Schembri
0427 582 245
larissaschembri.bl@ljhooker.com.au

AGENCY

LJ Hooker Liverpool
02 9708 2333

 **LJ Hooker**

- Approx. 1.6km to Liverpool Hospital
- Approx. 2.2km to Warwick Farm Public school
- Approx. 3.1km to Warwick Farm Train station

A fantastic opportunity not to be missed!

DISCLAIMER: While LJ Hooker Bankstown | Liverpool have taken all care in preparing this information and used their best endeavours to ensure that the information contained is true and accurate, we accept no responsibility and disclaim all liability in respect of any errors, inaccuracies, or misstatements contained herein. LJ Hooker Bankstown | Liverpool urges prospective purchasers to make their own inquiries to verify the information contained herein.

MORE DETAILS

Property ID	N5J0W
Property Type	Apartment
House Size	106 m2

Elie Hosni 0489 046 251

| eliehosni.bl@ljhooker.com.au

Larissa Schembri 0427 582 245

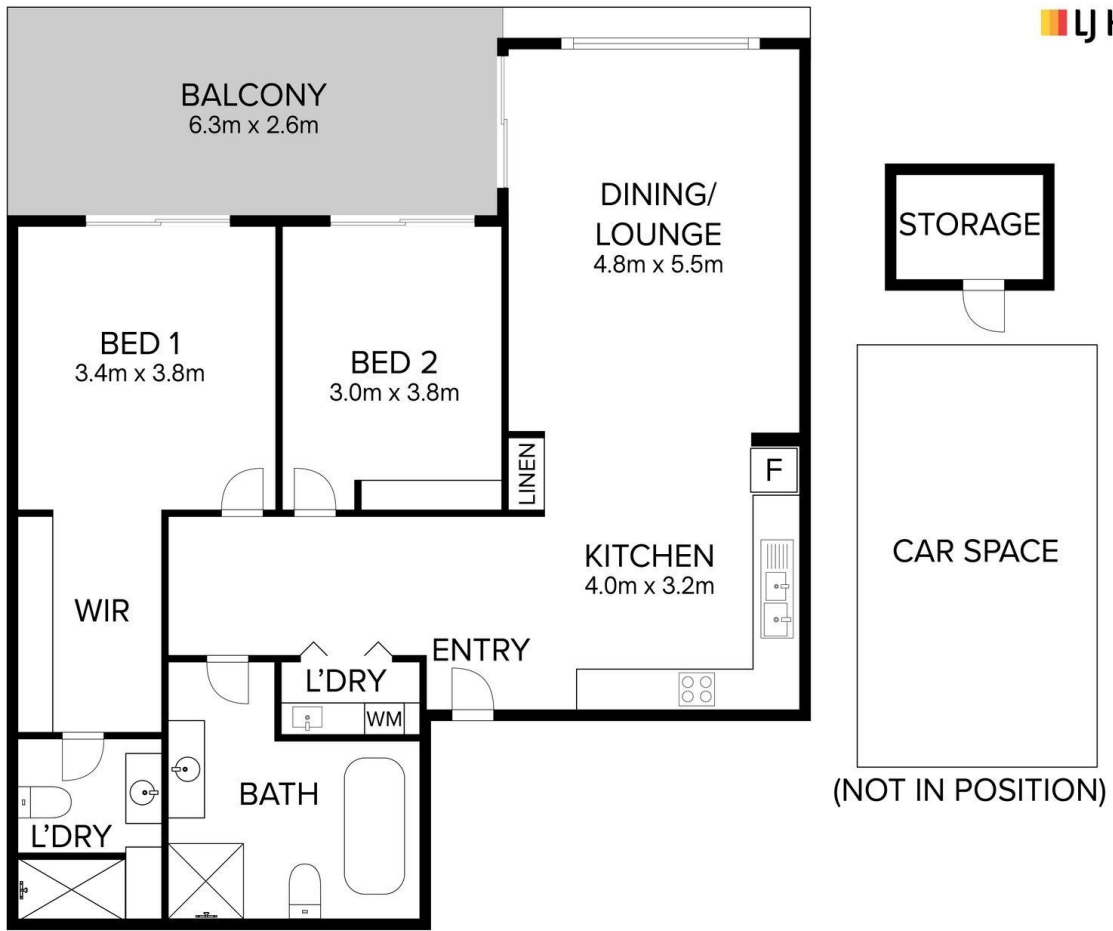
Licensee in charge/Director | larissaschembri.bl@ljhooker.com.au

LJ Hooker Liverpool 02 9708 2333

312 Macquarie Street, LIVERPOOL NSW 2170

liverpool.ljhooker.com.au | liverpool@ljhooker.com.au





16/57 Lachlan Street, Warwick Farm

Disclaimer: Dimensions are approximate and should only be used as a guide. All information contained herein is gathered from sources we believe to be reliable. However, we cannot guarantee its accuracy and interested parties should rely on their own enquiries.