



## Warriewood, 7 Eucalyptus Place

Beautiful Family Residence - Expansive Liveability in Quiet Estate

Nestled in a well established and serene pocket of Warriewood, this large family home presents perfectly, offering expansive liveability with harmonious flow and impressive proportions throughout.

Featuring classic neutral tones and a coastal aesthetic, this beautiful residence has been designed for the modern family. Boasting multiple living zones, easy care lawn and mature gardens, and a generous alfresco space - perfect for the avid entertainer. Perfectly suited for a growing family and equally ideal for those with teens/older children.

Positioned with access to the area's abundant nature reserves, picturesque walking trails, child-friendly parks, local shops, schools, express B-line city buses and surf beaches.

\* Situated in a whisper quiet family friendly estate with absolute minimum traffic and affords



**For Sale**  
Contact Agent

**View**  
[ljhooker.com.au/2VVRF6K](http://ljhooker.com.au/2VVRF6K)

**Contact**  
**Marco Cimino**  
0424 333 523  
[mcimino@ljhmv.com.au](mailto:mcimino@ljhmv.com.au)

**Ryan Petrie**  
0403 988 123  
[rpetrie@ljhmv.com.au](mailto:rpetrie@ljhmv.com.au)



**Disclaimer:** All information contained therein is gathered from relevant third parties sources. We cannot guarantee or give any warranty about the information provided. Interested parties must rely solely on their own enquiries.

**LJ Hooker Mona Vale**  
(02) 9979 8000



an impressive 345sqm approx. of internal space

- \* Entry level features generously proportioned and open plan living; formal living and dining, with additional living and casual dining space. An absolute dream for large families with kids and teens whilst also providing great options for entertaining guests
- \* Bright and airy, the kitchen presents a wonderful space for the family to gather. Stone bench tops, gas cooking, an array of Miele appliances and sunny view of the yard
- \* Living and dining zones seamlessly open to the expansive alfresco and level lawn. Offering an ideal setting for entertaining family and friends and also perfectly secure for kids and pets to enjoy
- \* Study on entry level that can also serve as 5th bedroom
- \* Four bedrooms on the upper level, all with built in robes. Large master suite with retreat, walk in robe and immaculate sizeable ensuite, featuring double vanity and separate bath/shower
- \* Rumpus/family room on upper level, great for a kids/teen retreat
- \* Family bathroom with double vanity, bath and shower located on bedroom level. W/C on entry level to service guests
- \* Full size laundry with convenient outdoor access
- \* Expansive double lock up garage with room for storage and access to backyard via double door - perfect for those with small boats
- \* Ducted air conditioning throughout, recently refurbished timber floors, storage and linen press
- \* No community or title levies

Disclaimer:

All information contained herewith, including but not limited to the general property description, price and the address, is provided to LJ Hooker Mona Vale by third parties. We have obtained this information from sources we believe to be reliable; however, we cannot guarantee its accuracy. The information contained herewith should not be relied upon and you should make your own enquiries and seek advice in respect of this property or any property on this website.

## More About this Property

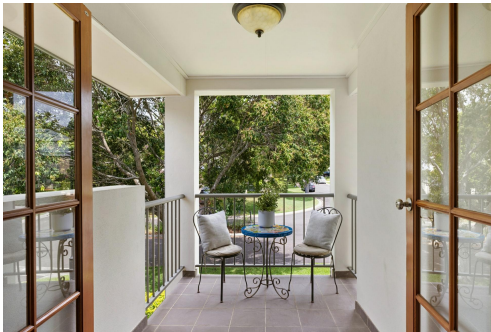
Property ID	2VVR6K
Property Type	House
Land Area	471 m <sup>2</sup>

**Marco Cimino 0424 333 523**  
 Licensed Real Estate Agent | mcimino@ljhmv.com.au  
**Ryan Petrie 0403 988 123**  
 Licensed Real Estate Agent | rpetrie@ljhmv.com.au

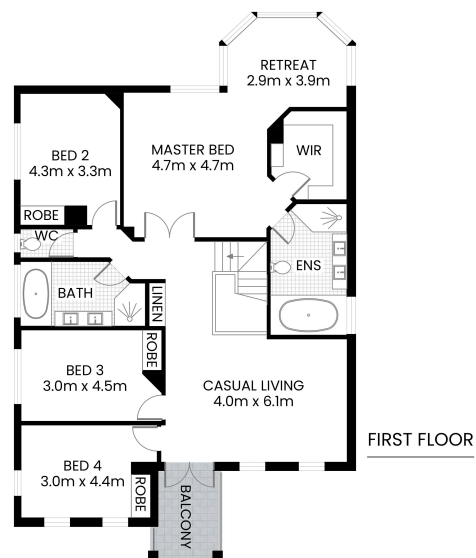
**LJ Hooker Mona Vale (02) 9979 8000**  
 3/18 Bungan Street, MONA VALE NSW 2103  
 monavale.ljhooker.com.au | monavale@ljhmv.com.au



**Disclaimer:** All information contained therein is gathered from relevant third parties sources. We cannot guarantee or give any warranty about the information provided. Interested parties must rely solely on their own enquiries.



**LJ Hooker Mona Vale**  
**(02) 9979 8000**



## 7 Eucalyptus Place Warriewood



INTERNAL FLOOR AREA 345m<sup>2</sup> APPROX.  
INCL GARAGE



The site plan and floor plan are not to scale; measurements are indicative and in meters. Bushes and trees are placed for illustration purposes. Plans should not be relied on. Interested parties should make and rely on their own enquire. All other information provided has been collected from reliable sources but cannot be guaranteed for accuracy.



**LJ Hooker Mona Vale**  
(02) 9979 8000

**Disclaimer:** All information contained therein is gathered from relevant third parties sources. We cannot guarantee or give any warranty about the information provided. Interested parties must rely solely on their own enquiries.