



## Warriewood, 1 Peel Place

The Original Beachcomber - A Coastal Gem Across from Turimetta Beach

Auction Location: On-site

For the first time in over half a century, this iconic, north-facing residence-known fondly as the Original Beachcomber-is being offered to the market.

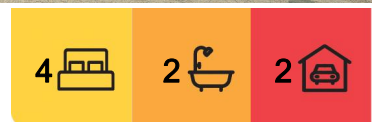
Positioned proudly on a 613.4sqm corner block opposite the pristine sands of Turimetta Beach and the headland reserve, this home is the ultimate Northern Beaches opportunity.

Crafted in enduring double brick, the home showcases sunlit open-plan living across two generous levels, with four oversized bedrooms and two bathrooms-perfectly suited for large families, multi-generational living, or those seeking a flexible dual-living setup.

Every inch of the property reflects care and quality, offering a solid foundation for modern



**Disclaimer:** All information contained therein is gathered from relevant third parties sources. We cannot guarantee or give any warranty about the information provided. Interested parties must rely solely on their own enquiries.



**For Sale**  
Opposite Beach & Surf...

**View**  
[ljhooker.com.au/2W0FF6K](http://ljhooker.com.au/2W0FF6K)

**Contact**  
**Kylie Segedin**  
0417 744 317  
[ksegedin@ljhmv.com.au](mailto:ksegedin@ljhmv.com.au)

**Melissa Pease**  
0414 673 273  
[mpease@ljhmv.com.au](mailto:mpease@ljhmv.com.au)

**LJ Hooker Mona Vale**  
(02) 9979 8000



enhancements while celebrating its timeless character. With a wide 30m street frontage, the home is both private and welcoming-gated, secure, and complete with a double garage plus ample off-street parking for a boat or caravan.

Step outside to discover immaculate grounds, sun-drenched outlooks, and an unbeatable lifestyle. Just moments from three iconic beaches, scenic walking trails, coastal cafes, restaurants, schools, playing fields and B-line express city transport-this is where lifestyle meets legacy.

And yes, you're literally around the corner from the rockpool and lake. Morning swim, coffee in hand, and home before the world wakes up!

Don't miss your chance to own a piece of beachside history...

EXTENDED SETTLEMENT TERMS AVAILBLE ON REQUEST

Disclaimer:

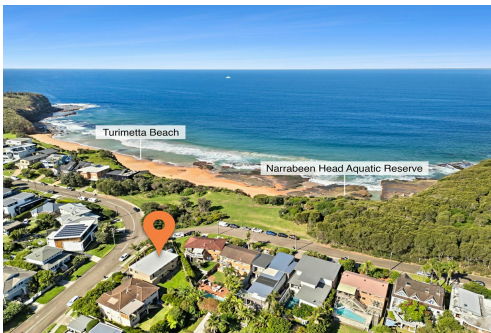
All information contained herewith, including but not limited to the general property description, price and the address, is provided to LJ Hooker Mona Vale by third parties. We have obtained this information from sources we believe to be reliable; however, we cannot guarantee its accuracy. The information contained herewith should not be relied upon and you should make your own enquiries and seek advice in respect of this property or any property on this website.

## More About this Property

Property ID	2W0FF6K
Property Type	House
Land Area	613.4 m2

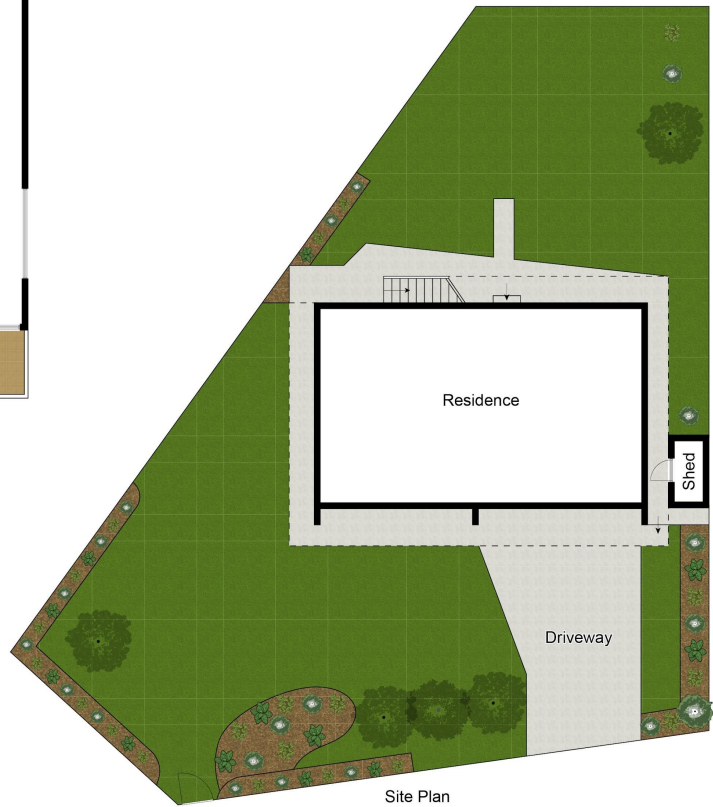
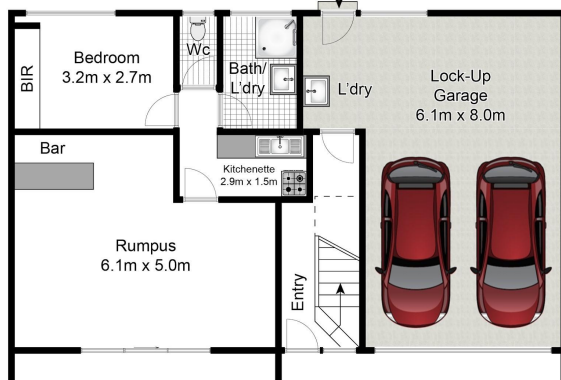
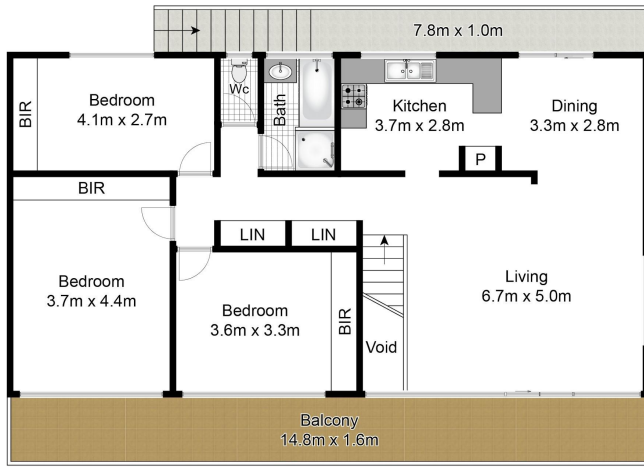
**Kylie Segedin 0417 744 317**  
Licensed Real Estate Agent | [ksegedin@ljhmv.com.au](mailto:ksegedin@ljhmv.com.au)  
**Melissa Pease 0414 673 273**  
Licensed Real Estate Agent | [mpease@ljhmv.com.au](mailto:mpease@ljhmv.com.au)

**LJ Hooker Mona Vale (02) 9979 8000**  
3/18 Bungan Street, MONA VALE NSW 2103  
[monavale.ljhooker.com.au](http://monavale.ljhooker.com.au) | [monavale@ljhmv.com.au](mailto:monavale@ljhmv.com.au)



**Disclaimer:** All information contained therein is gathered from relevant third parties sources. We cannot guarantee or give any warranty about the information provided. Interested parties must rely solely on their own enquiries.

**LJ Hooker Mona Vale**  
**(02) 9979 8000**



Whilst **bwrn.com.au** has made every attempt to ensure the accuracy of the floor plan contained here, measurements are approximate and no responsibility is taken for any error, omission, or mis-statement. This plan is for illustrative purposes only.



## 1 Peal Place, Warriewood Beach



**LJ Hooker Mona Vale**  
**(02) 9979 8000**

**Disclaimer:** All information contained therein is gathered from relevant third parties sources. We cannot guarantee or give any warranty about the information provided. Interested parties must rely solely on their own enquiries.