

## Warkworth, 28 Waitai Crescent

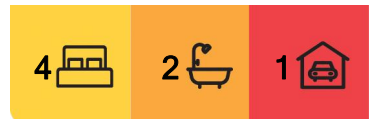
Move-In Ready with CCC Issued !!!

Welcome to an exciting opportunity in the brand-new Warkworth Ridge community - where modern living meets an unbeatable lifestyle.

Enjoy beautifully designed footpaths, scenic cycleways, and a vibrant future village centre with shops and restaurants just around the corner. Plus, you're only steps away from the neighbourhood walking track, perfect for daily strolls and weekend adventures.

Commuting is a breeze with the new motorway extension just up the road, offering easy access to Auckland CBD and the North Shore. When it's time to unwind, you're just a short drive from the boutique markets of Matakana and the beautiful beaches of Omaha.

This beautiful home offers four comfortable bedrooms and two stylish bathrooms, including a luxurious master ensuite.



**For Sale**

Price on Application

**View**

[ljhooker.co.nz/CY3GUK](https://ljhooker.co.nz/CY3GUK)

**Contact**

**Kevin Su**

021 066 8888

[ksu.ponsonby@ljhooker.co.nz](mailto:ksu.ponsonby@ljhooker.co.nz)

**Kevin Su**

021 066 8888

[ksu.ponsonby@ljhooker.co.nz](mailto:ksu.ponsonby@ljhooker.co.nz)



**Disclaimer:** All information contained therein is gathered from relevant third parties sources.

We cannot guarantee or give any warranty about the information provided. Interested parties must rely solely on their own enquiries.

**LJ Hooker Ponsonby**  
**(09) 376 7530**

Ponsonby Estate Agents Limited

The open-plan living and dining areas are light-filled and perfect for modern living, while the sleek, contemporary kitchen makes entertaining effortless.

A carpeted garage adds extra comfort and functionality, perfect for a home gym, storage, or simply a warmer, cleaner space for your car.

You'll love the easy-care, low-maintenance lifestyle - ideal for busy families, professionals, or anyone seeking a perfect "lock-up and leave" home.

Don't miss your chance to secure this exceptional property at 28 Waitai Crescent Warkworth.

Contact us today or join us for weekend open home - your perfect lifestyle starts here!  
To download the information pack for this property, please copy the below link into your web browser: <https://vltre.co/bw8xNI>

## More About this Property

<b>Property ID</b>	CY3GUK
<b>Property Type</b>	House
<b>Including</b>	Ensuite
<b>Licensed Real Estate Agents (REAA2008)</b>	

### Kevin Su 021 066 8888

Salesperson | [ksu.ponsonby@ljhooker.co.nz](mailto:ksu.ponsonby@ljhooker.co.nz)

### Kevin Su 021 066 8888

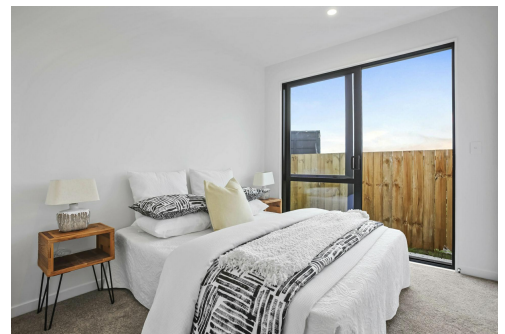
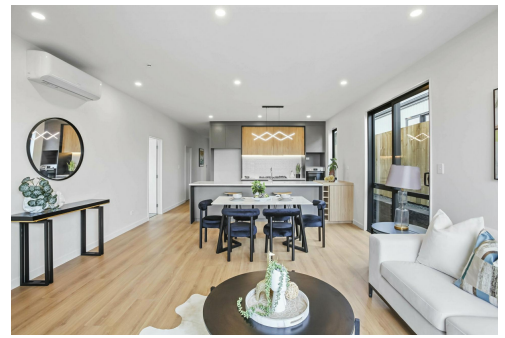
Salesperson | [ksu.ponsonby@ljhooker.co.nz](mailto:ksu.ponsonby@ljhooker.co.nz)

### LJ Hooker Ponsonby (09) 376 7530

Ponsonby Estate Agents Limited

53 Ponsonby Road, PONSONBY NZ 1011

[ponsonby.ljhooker.co.nz](mailto:ponsonby.ljhooker.co.nz) | [ponsonby@ljhooker.co.nz](mailto:ponsonby@ljhooker.co.nz)



**Disclaimer:** All information contained therein is gathered from relevant third parties sources.

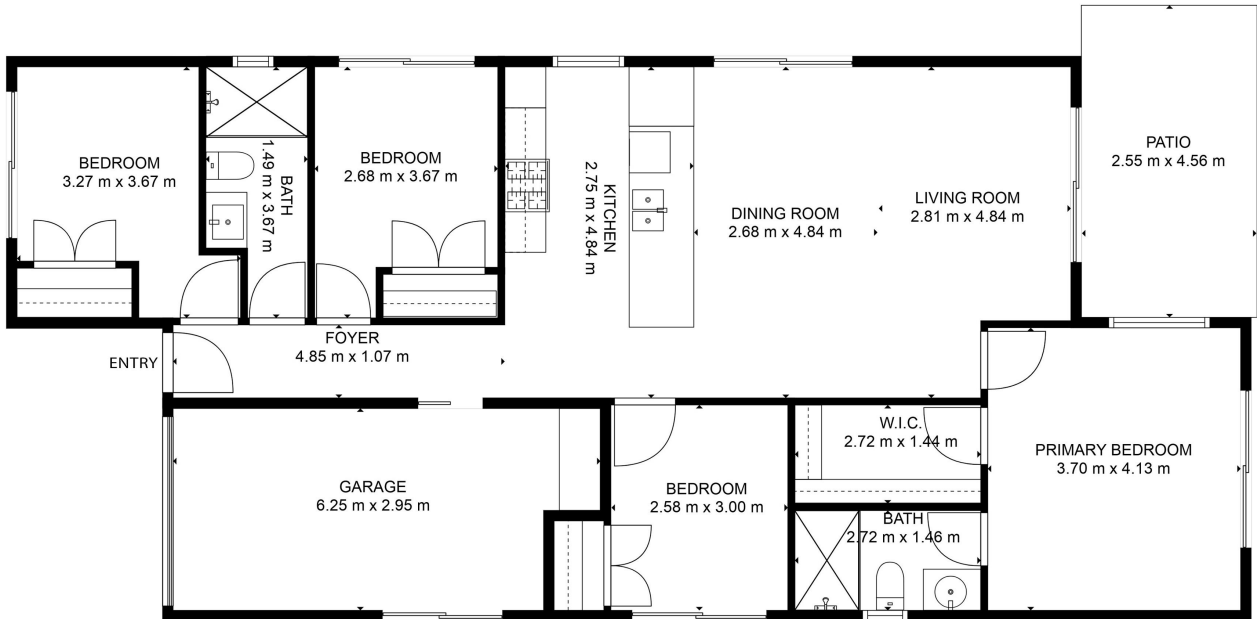
We cannot guarantee or give any warranty about the information provided. Interested parties must rely solely on their own enquiries.

**LJ Hooker Ponsonby**

**(09) 376 7530**

Ponsonby Estate Agents Limited

## 28 WAITAI CRESCENT



THIS FLOORPLAN IS PROVIDED WITHOUT WARRANTY OF ANY KIND. SENSOPIA DISCLAIMS ANY WARRANTY INCLUDING, WITHOUT LIMITATION, SATISFACTORY QUALITY OR ACCURACY OF DIMENSIONS.

Floor Plan by  
[www.fullexposurenz.com](http://www.fullexposurenz.com)