



60 Windsor Road, Wamberal




Renovated Family Retreat Backing onto Golf Course

Positioned on a generous parcel backing directly onto the lush fairways of Breakers Country Club golf course, this renovated two-storey residence delivers the ultimate combination of space, style and relaxed resort-style living in one of Wamberal's most sought-after pockets.

Designed with large families in mind, the home reveals an expansive and versatile floorplan with multiple living zones, generous bedrooms and seamless indoor-outdoor flow. Freshly updated throughout, the interiors showcase a stunning modern kitchen, beautifully renovated bathrooms and hybrid timber flooring, creating a contemporary coastal feel with effortless functionality.

At the heart of the home, spacious living and dining areas extend to an expansive covered entertaining space overlooking the private oasis-style pool and tropical gardens. Whether hosting family gatherings, entertaining friends or simply unwinding in complete peace and privacy, this exceptional outdoor setting offers a true resort-style experience all year round.

Set within a tightly held golf course enclave just moments from

4  2  2 

AUCTION

Sat 25th Jul @ 11:30AM

VIEW

Sat 11th Jul @ 10:45AM - 11:15AM

AGENTS

Michael Ahearn

0466 464 240

michael.ahearn@ljhooker.com.au

Luke Reid

0435 118 300

luke.reid@ljhooker.com.au

AGENCY

LJ Hooker Terrigal

(02) 4385 8444

All information contained therein is gathered from relevant third parties sources.
We cannot guarantee or give any warranty about the information provided.
Interested parties must rely solely on their own enquiries.

 **LJ Hooker**

Wamberal Beach, Terrigal's vibrant dining scene, quality schools, cafés and local amenities, this is a rare opportunity to secure a substantial family home with lifestyle appeal in an enviable coastal location.

Key features

- Spacious two-storey home on a 745sqm block backing onto Breakers Country Club's golf course
- Four generous bedrooms all with built-in robes
- Stylish and spacious kitchen with large island, gas cooktop, dishwasher and ample storage
- " 3 generous living areas set across both levels —flexibility to create a home office, guest accommodation or rumpus
- 2 renovated bathrooms with modern fixtures and finishes. Main bathroom boasts walk-in shower and bathtub
- Split-system a/c, wood burning fireplace, ceiling fans throughout
- Expansive covered outdoor entertaining area overlooking oasis style pool
- Double car drive-through garage, with ample space to park a boat, trailer, or small caravan
- Private access to Breakers Country Club's golf course
- Large external laundry
- Convenient location close to beaches, schools, shops and Breakers Country Club and golf course
- Short drive to Erina Fair shopping centre and 15-20 minutes to Gosford Train Station and M1 freeway to Sydney and Newcastle

Rates

Council \$3,173.74 Per annum

Water \$1,017.37 Per annum

Please note that all information herein is gathered from sources we believe to be reliable. Images, photographs, plans, drawings and maps are indicative only. LJ Hooker Terrigal makes no representation or warranty as to the accuracy of the information provided and accepts no liability for any errors or omissions. All interested parties should make and rely upon their own independent enquiries. All measurements and details are approximate and subject to change without notice.

MORE DETAILS

Property ID	1ESZGC1
Property Type	House
Land Area	745 m2
Including	Air Conditioning Dishwasher Built-in-Robes Area Views Carpeted Close to Schools Close to Shops Close to Transport Family room

Michael Ahearn 0466 464 240

Sales Specialist - LREA | michael.ahearn@ljhooker.com.au

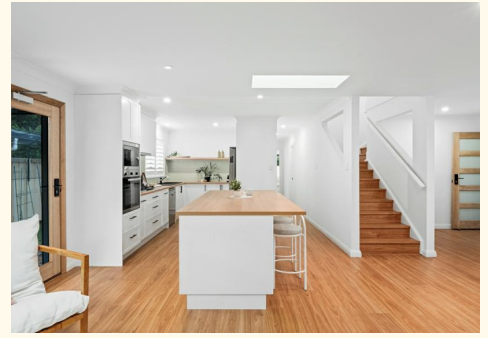
Luke Reid 0435 118 300

Sales Associate to Michael Ahearn | luke.reid@ljhooker.com.au

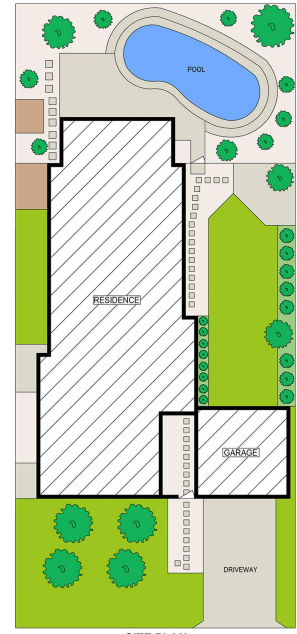
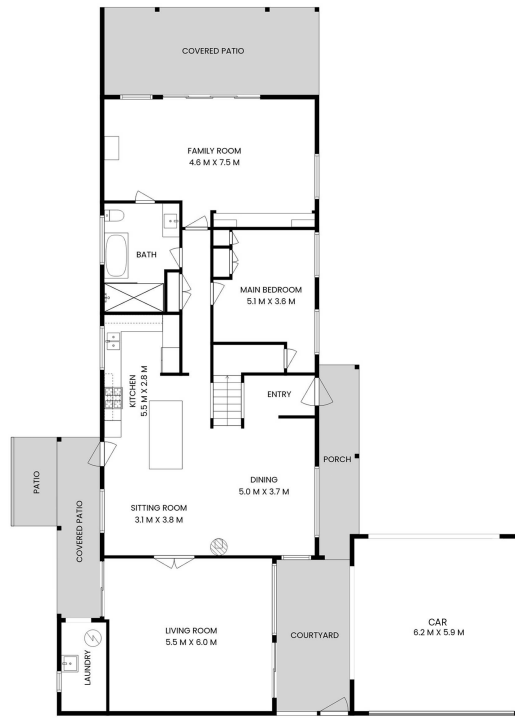
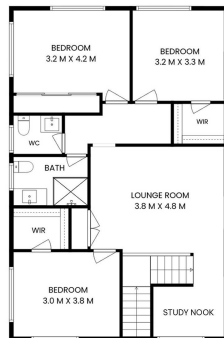
LJ Hooker Terrigal (02) 4385 8444

Shop 1 & 2, 1 Campbell Crescent, TERRIGAL NSW 2260
terrigan.ljhooker.com.au | terrigan@ljhooker.com.au

All information contained therein is gathered from relevant third parties sources.
We cannot guarantee or give any warranty about the information provided.
Interested parties must rely solely on their own enquiries.



60 Windsor Road, Wamberal



Scale in meter. Indicative only. Measurement and dimensions are approximate.
All information contained herein is gathered from source we believe to be reliable.
However we cannot guarantee its accuracy and interested persons should rely on their own enquiries.



Internal: 249sqm
External: 100sqm