



Wamberal, 18 Dover Road

Experience Coastal Luxury: Unparalleled Design, Breathtaking Views, and Beachside Bliss

Contemporary Masterpiece with Awe-Inspiring Views

This palatial beachside residence exudes luxury and awe-inspiring views at every turn. An architectural statement spanning over three cascading levels showcasing grand interiors and sophisticated entertaining spaces effortlessly blending contemporary elements with coastal charm.

Set within a stroll to Wamberal Beach and only minutes to the heart of Terrigal, this rare chance to acquire a lavish home or attractive holiday rental totaling more than \$270,000 gross income (\$12,000 p/w in peak season) is a once in a lifetime opportunity.

-Setting the benchmark in cutting-edge luxury living, this ingenious design, by

6

4

2

For Sale

\$3,715,000

View

ljhooker.com.au/17YDGC1

Contact

Michael Ahearn

0466 464 240

michael.ahearn@ljhooker.com.au

Tim Andrews

0412 663 065

tim.andrews@ljhooker.com.au



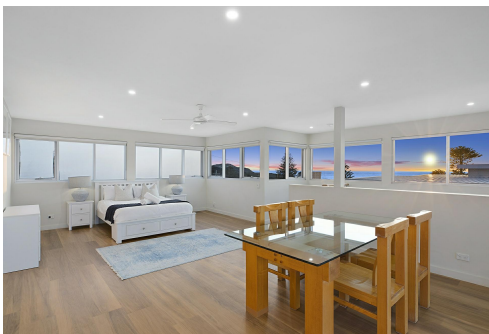
Disclaimer: All information contained therein is gathered from relevant third parties sources.

We cannot guarantee or give any warranty about the information provided. Interested parties must rely solely on their own enquiries.

LJ Hooker Terrigal
(02) 4385 8444

renowned Architect Cathy Slater, maximises panoramic ocean views over Wamberal and Terrigal Beaches

- Only 220m to the stunning shore of Wamberal Beach plus cafes, restaurants and shops
- Outstanding composition with great versatility to utilise as a large family home or accommodate up to four families or 16 guests as a holiday rental
- Entry level consists of expansive open plan living, dining and kitchen extending to both front and rear balconies capturing majestic ocean views, plus main bathroom and four bedrooms all with built-in-robres, one with ensuite bathroom and private balcony access
- State-of-the-art kitchen with grand waterfall island bench, Caesarstone benchtops, gas cooking, Miele appliances, soft close cabinetry, water filter and window feature splashback
- Lower level showcases incredible self-contained living option with sixth bedroom, study, rumpus, bathroom, laundry and kitchenette with sliding doors opening out to the spectacular entertaining oasis with a stunning solar heated pool, level grassed yard, tropical landscaping and established hedging for privacy
- Upper level contains the showstopper master retreat or third living space taking in a bird's eye view across Wamberal and Terrigal Beach with deluxe ensuite, living space and huge covered balcony. This space is ideal for curling up with a good book, entertaining or just taking in the spectacular views
- Meticulously crafted with high end features and finishes throughout including, A/C, timber floors, louver windows, double garage, storage, outdoor shower
- Enjoy the supreme beachside convenience of this blue-ribbon address with easy access to public transport, only 10 minutes to Erina Fair Shopping Centre and 15-20 minutes to M1 Freeway to Sydney and Newcastle



More About this Property

Property ID 17YDGC1

Property Type House

Land Area 670 m²

Michael Ahearn

Sales Specialist | michael.ahearn@ljhooker.com.au

Tim Andrews

Principal / Licensee | tim.andrews@ljhooker.com.au

LJ Hooker Terrigal (02) 4385 8444

Shop 1 & 2, 1 Campbell Crescent, TERRIGAL NSW 2260

terrigan.ljhooker.com.au | terrigan@ljhooker.com.au



LJ Hooker Terrigal
(02) 4385 8444

Disclaimer: All information contained therein is gathered from relevant third parties sources. We cannot guarantee or give any warranty about the information provided. Interested parties must rely solely on their own enquiries.



Upper Level



Site Plan



Lower Level



Entry Level



18 Dover Road, Wamberal



APPROX. FLOOR AREA	345m ²
BALCONY AREA	174m ²
GARAGE AREA	36m ²
STORAGE AREA	5m ²

Disclaimer : Plans prepared by Key 2 Exposure. Scale in metres. Indicative only. Dimensions are approximate.
All information contained herein is gathered from sources we believe to be reliable. However we cannot guarantee its accuracy and interested persons should rely on their own enquiries.

