

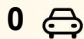




83 Henning Crescent, Wallerawang

3  1  0 

Modern Family Living with Space, Views & Convenience

Positioned in the highly sought after Mountain View Estate, this modern family home offers the perfect blend of comfort, practicality and lifestyle. Set on a generous 646 square metre block with picturesque rural outlooks and easy access to local amenities, this well presented residence is ideal for growing families, first home buyers or investors seeking a quality property in a family friendly neighbourhood.

Designed for relaxed living, the home features a light filled open plan layout that seamlessly combines the kitchen, dining and living spaces, creating a welcoming hub for everyday family life. Large double glazed windows frame the surrounding views while allowing an abundance of natural light throughout.

The well-appointed kitchen offers ample storage, quality appliances and generous bench space, making meal preparation a breeze. Three comfortable bedrooms provide accommodation for the whole family, while the modern bathroom features both a freestanding bath and separate shower. The home is kept cosy throughout the cooler months with hydronic gas central heating, and there is back to grid solar to assist with the power bills.

FOR SALE
\$580,000

VIEW
Sat 13th Jun @ 2:00PM - 2:20PM

AGENTS
Blake Edgell
0434 579 426
bedgell@ljlithgow.com.au

AGENCY
LJ Hooker Lithgow
(02) 6351 2548

All information contained therein is gathered from relevant third parties sources.
We cannot guarantee or give any warranty about the information provided.
Interested parties must rely solely on their own enquiries.

 **LJ Hooker**

Step outside to enjoy the elevated entertaining deck where you can take in the stunning district views, or relax in the spacious backyard with plenty of room for children and pets to play. The property also benefits from excellent under house storage and off street parking.

Located just moments from schools, shops, sporting facilities and the beautiful Lake Wallace recreation area, this is a fantastic opportunity to secure a quality home in one of Wallerawang's most popular residential estates.

Leased until October 2026 at \$470 per week to excellent tenants.

MORE DETAILS

Property ID	16ZHF9X
Property Type	House
House Size	165 m2
Land Area	646.4 m2

Blake Edgell 0434 579 426
Sales Agent | bedgell@ljhlithgow.com.au

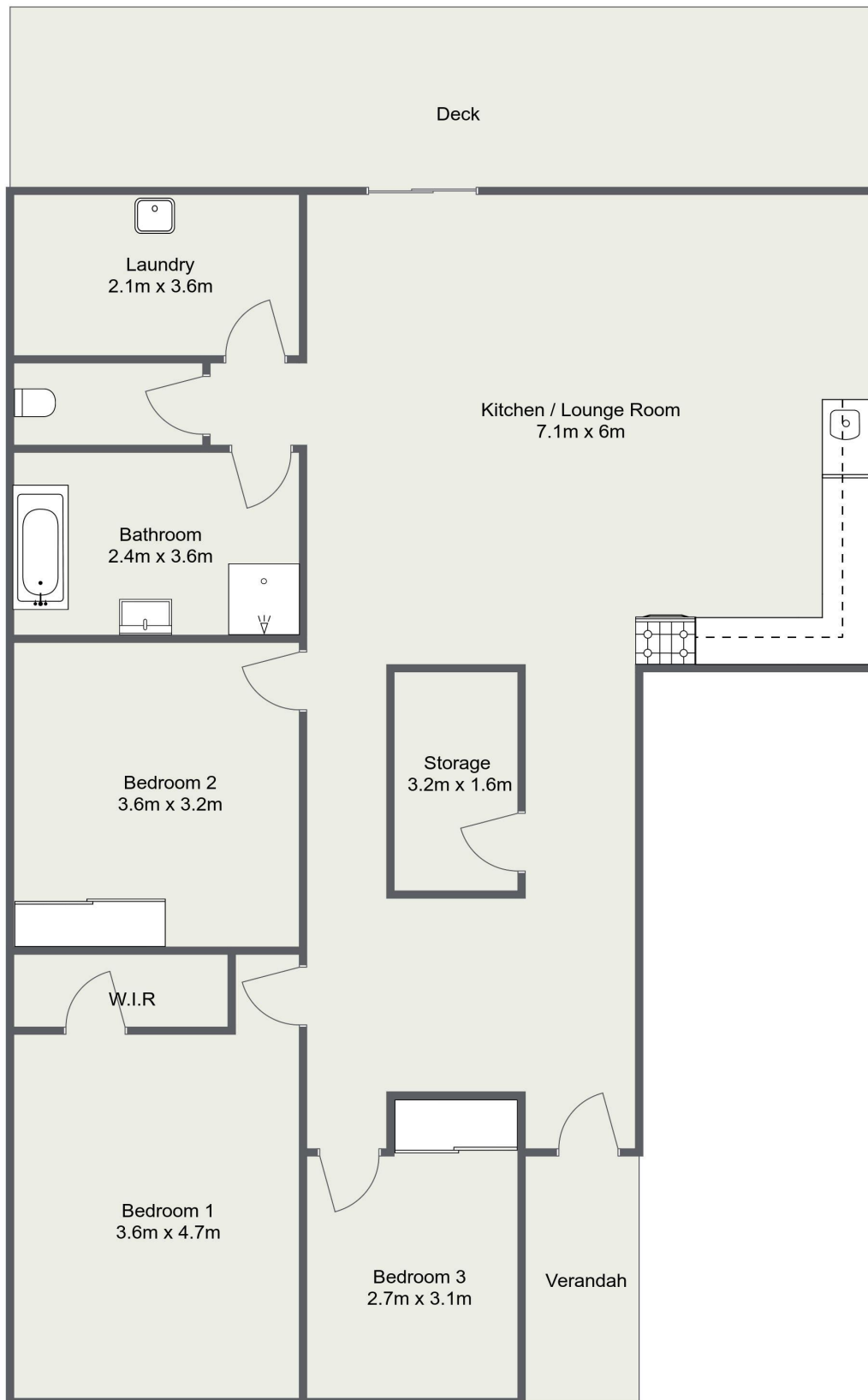
LJ Hooker Lithgow (02) 6351 2548
201 Main Street, LITHGOW NSW 2790
lithgow.ljhooker.com.au | enquiries@ljhlithgow.com.au



All information contained therein is gathered from relevant third parties sources.
We cannot guarantee or give any warranty about the information provided.
Interested parties must rely solely on their own enquiries.



83 Henning Crescent, Wallerawang



Please Note: The above dimensions are approximate and are intended to be used as a guide only.
Interested parties are urged to rely on their own enquiries.