



6 Lidsdale Street, Wallerawang

Space, Comfort & Convenience

Positioned in a quiet cul-de-sac, this well presented three bedroom clad home offers comfortable living with plenty of room to move.

The expansive floor plan features 3 large bedrooms all with built-in robes, a modern kitchen with breakfast bar and pantry, 3 spacious living areas, a modern bathroom with spa bath, and an enclosed rear sunroom/entertainment area.

The home has natural gas central heating throughout, along with split system air conditioning, and a back to grid solar energy system to assist with the power bills. Every window has an electric security shutter installed for peace of mind.


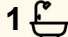

The 865 square metre lot offers front and rear lane access, and plenty of options with space for the kids to play, and the access for a caravan or boat. There is access to a double garage with power.

Conveniently located and move-in ready, this property delivers comfort, space, and value in one appealing package.

Would suit a first home buyer or investor wanting a ready to lease proposition.

- Mt Victoria Pass is temporarily closed, however Lithgow is still accessible from Sydney and the Blue Mountains via the Darling

All information contained therein is gathered from relevant third parties sources. We cannot guarantee or give any warranty about the information provided. Interested parties must rely solely on their own enquiries.

3  1  2 

FOR SALE
\$595,000

VIEW
By Appointment

AGENTS
Jamie Giokaris
0418 201 028
jgiokaris@ljlithgow.com.au

AGENCY
LJ Hooker Lithgow
(02) 6351 2548

 **LJ Hooker**

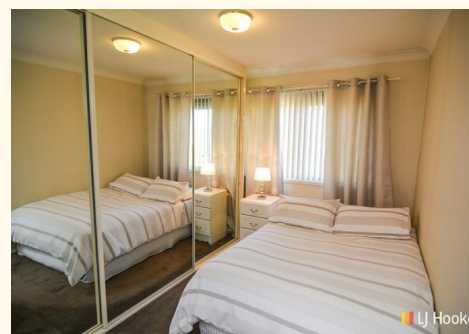
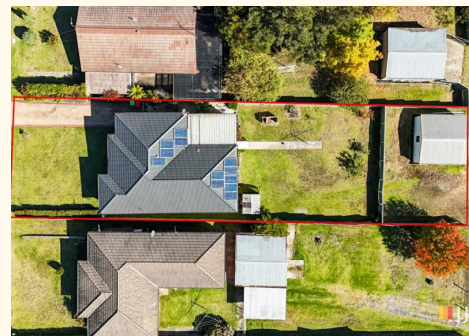
Causeway diversion from the Great Western Highway and alternatively the Bells Line of Road.
Allow an extra 20 minutes travel time.

MORE DETAILS

Property ID	1JNCF9X
Property Type	House
House Size	143.5 m2
Land Area	865 m2

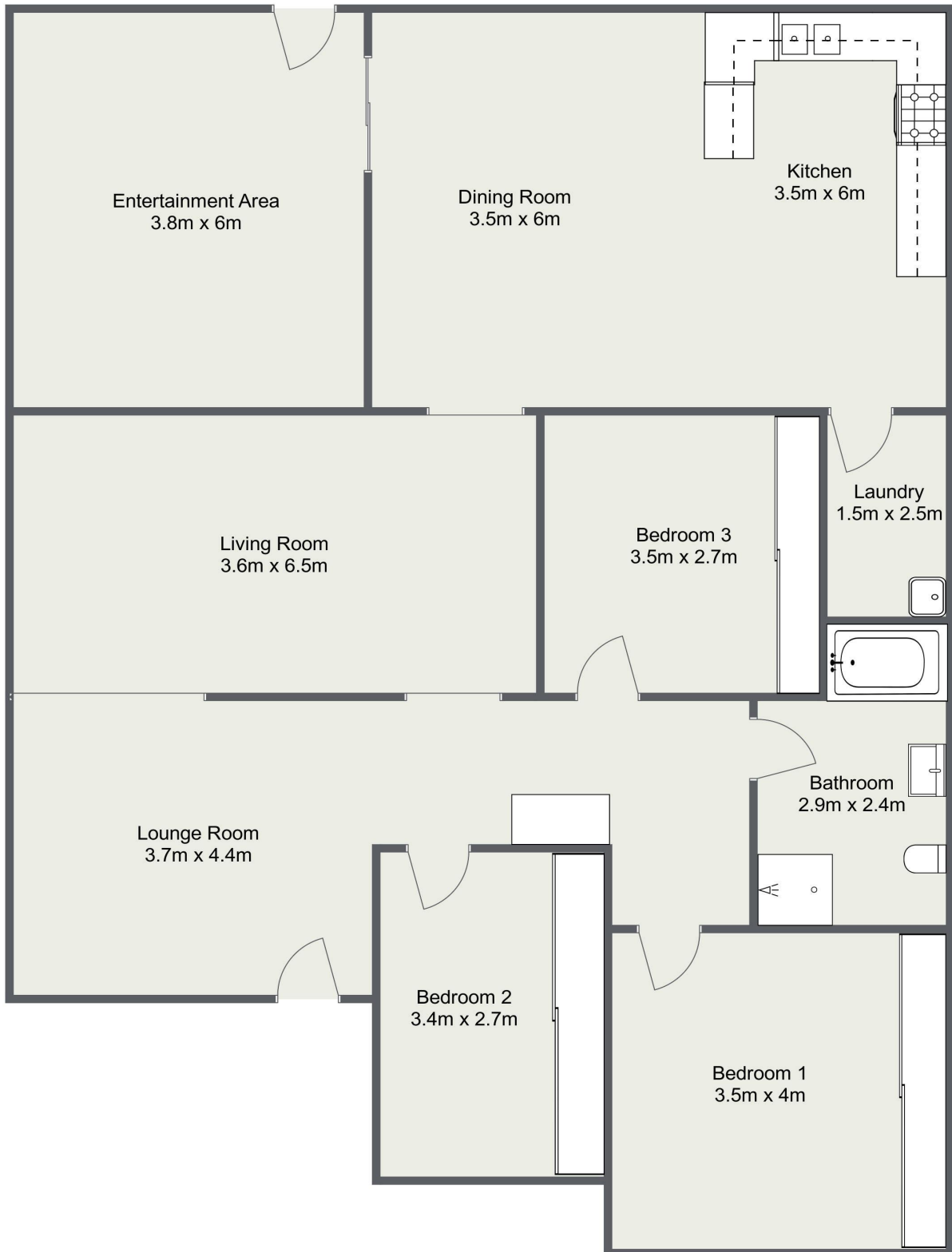
Jamie Giokaris 0418 201 028
Principal | jgiokaris@ljhlithgow.com.au

LJ Hooker Lithgow (02) 6351 2548
201 Main Street, LITHGOW NSW 2790
lithgow.ljhooker.com.au | enquiries@ljhlithgow.com.au



All information contained therein is gathered from relevant third parties sources.
We cannot guarantee or give any warranty about the information provided.
Interested parties must rely solely on their own enquiries.

6 Lidsdale Street, Wallerawang



Please Note: The above dimensions are approximate and are intended to be used as a guide only. Interested parties are urged to rely on their own enquiries.