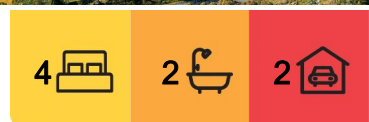




Wallerawang, 22 Henning Crescent

Mountain View Estate Stunner

A fantastic family home with a quality fit out and a modern, conventional floor plan. Features include 4 bedrooms, main with an ensuite, a separate living room, a spacious open plan Caeserstone kitchen, meals and family room and a high end bathroom with freestanding bath. There is ducted reverse cycle air conditioning throughout and a level fully fenced rear yard is ideal for pets and a growing family. Great value at this price.



For Sale
\$665,000

View
ljhooker.com.au/1H5HF9X

Contact
Jamie Giokaris
0418 201 028
jgiokaris@ljhlithgow.com.au



Disclaimer: All information contained therein is gathered from relevant third parties sources. We cannot guarantee or give any warranty about the information provided. Interested parties must rely solely on their own enquiries.

LJ Hooker Lithgow
(02) 6351 2548

More About this Property

Property ID	1H5HF9X
Property Type	House
Land Area	600 m ²

Jamie Giokaris 0418 201 028

Principal & Licensee | jgiokaris@ljhlithgow.com.au

LJ Hooker Lithgow (02) 6351 2548

201 Main Street, LITHGOW NSW 2790

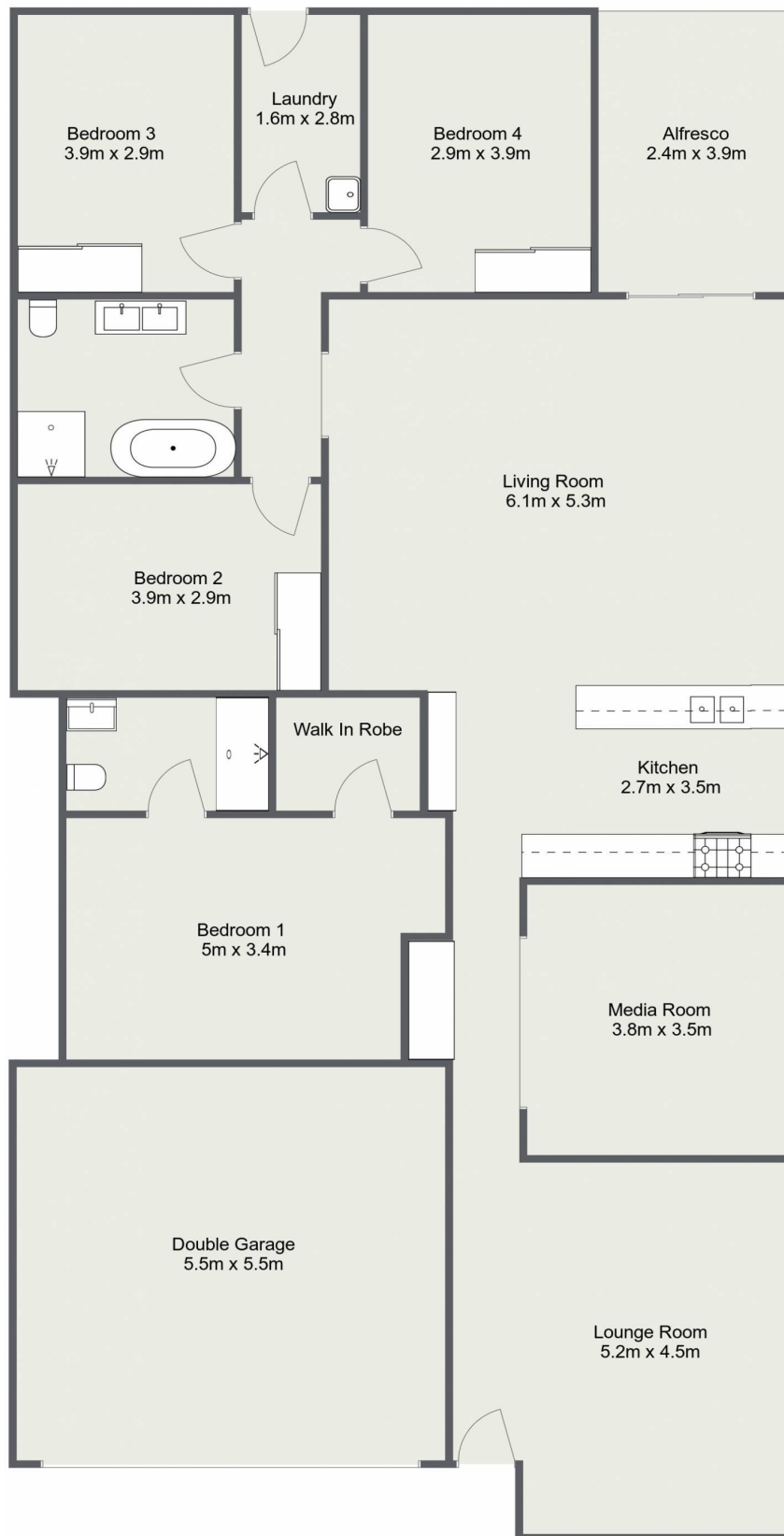
lithgow.ljhooker.com.au | enquiries@ljhlithgow.com.au



Disclaimer: All information contained therein is gathered from relevant third parties sources. We cannot guarantee or give any warranty about the information provided. Interested parties must rely solely on their own enquiries.

**LJ Hooker Lithgow
(02) 6351 2548**

22 Henning Crescent, Wallerawang



Please Note: The above dimensions are approximate and are intended to be used as a guide only. Interested parties are urged to rely on their own enquiries.