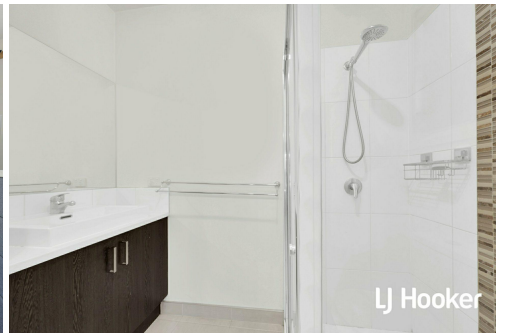




LJ Hooker



LJ Hooker



LJ Hooker

Wallan, Unit 11/6 Eden Place

Prime Location, Perfect for First-Time Buyers and Investors

This property is an excellent opportunity for investors and first-time homebuyers looking to enter the thriving Wallan market. Ideally situated just a five-minute commute from the train station, and within a short walking distance to schools, shops, and essential services, this location is highly sought after.

The home features three well-appointed bedrooms. The master suite, located at the front, boasts a walk-in wardrobe and a private ensuite. The two additional bedrooms, situated at the rear of the home, offer built-in wardrobes with easy access to the main bathroom, which includes a shower, bath, and vanity.

The kitchen is a standout feature, equipped with ample bench and cupboard space, as well as modern appliances, including a gas cooktop, electric oven, and dishwasher. Adjacent to the kitchen is a spacious meals and living area, perfect for family gatherings and entertaining, with enough room for a dining table and a comfortable lounge suite.

Additional highlights of this property include a double remote garage, an alfresco area for



For Sale
Please Call

View
ljhooker.com.au/7Q4HJS

Contact
Sally Long
0477 437 281
sally.long@ljhooker.com.au
Gavin Henderson
0408 359 764
ghenderson.broadford@ljhooker.com.au



LJ Hooker Broadford | Kilmore
(03) 5784 2558

Disclaimer: All information contained therein is gathered from relevant third parties sources. We cannot guarantee or give any warranty about the information provided. Interested parties must rely solely on their own enquiries.

outdoor enjoyment, double block-out blinds for privacy and comfort, ducted heating, split system cooling, and a generously sized yard. This home is move-in ready, offering a perfect blend of comfort and convenience. Don't miss the chance to make it your own! Please contact Sally Long for all enquiries.

More About this Property

Property ID	7Q4HJS
Property Type	Unit
Land Area	317 m2
Including	Toilets (2)

Sally Long 0477 437 281

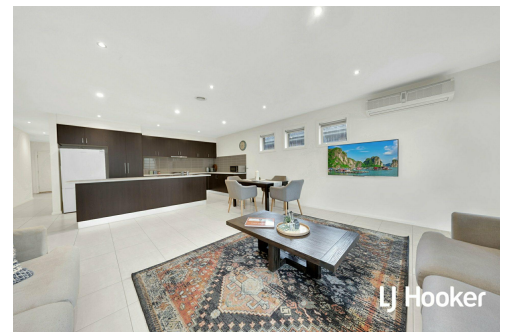
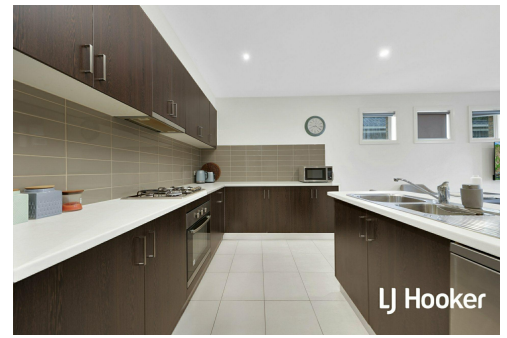
Licensed Real Estate Agent | sally.long@ljhooker.com.au

Gavin Henderson 0408 359 764

Principal | ghenderson.broadford@ljhooker.com.au

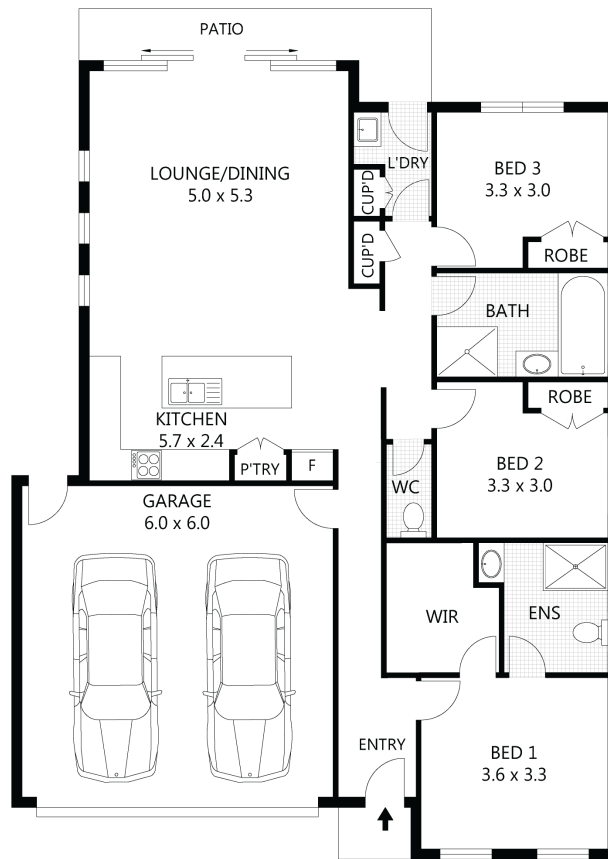
LJ Hooker Broadford | Kilmore (03) 5784 2558

1629 Broadford Wandong Road, BROADFORD VIC 3658
broadford.ljhooker.com.au | broadford@ljhooker.com.au



LJ Hooker Broadford | Kilmore
(03) 5784 2558

Disclaimer: All information contained therein is gathered from relevant third parties sources. We cannot guarantee or give any warranty about the information provided. Interested parties must rely solely on their own enquiries.



Scale in metres. Indicative only. Dimensions are approximate. All information contained herein is gathered from sources we believe to be reliable. However we cannot guarantee its accuracy and interested parties should rely on their own enquiries.



11/6 Eden Place, Wallan



LJ Hooker Broadford | Kilmore
(03) 5784 2558

Disclaimer: All information contained therein is gathered from relevant third parties sources. We cannot guarantee or give any warranty about the information provided. Interested parties must rely solely on their own enquiries.