



Wallan, 6 Kingfisher Way

Unfinished Dream: 36-Square Home Ready for Completion

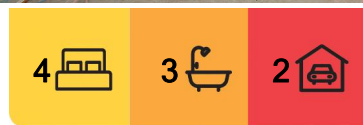
An exceptional opportunity awaits at 6 Kingfisher Way, Wallan, where a spacious 35-square home on approximately 568 sqm is waiting for the final touches to bring it to life. Whether you're a builder, investor, or homeowner looking to complete your dream residence, this property offers a solid foundation with an expansive layout in a sought-after location.

Property Features:

- 36-square contemporary home, designed for modern family living.
- Spacious open-plan layout, maximising natural light and space.
- Four generous bedrooms, including a master suite with space for a walk-in robe and ensuite.
- Multiple living areas, including a formal lounge, family/dining area, and a rumpus room.
- Large kitchen space, ready to be customised to your taste.



Disclaimer: All information contained therein is gathered from relevant third parties sources. We cannot guarantee or give any warranty about the information provided. Interested parties must rely solely on their own enquiries.



For Sale
Please Call

View
ljhooker.com.au/7Q2HJS

Contact
Sally Long
0477 437 281
sally.long@ljhooker.com.au
Gavin Henderson
0408 359 764
ghenderson.broadford@ljhooker.com.au

LJ Hooker Broadford | Kilmore
(03) 5784 2558

- Covered alfresco area, perfect for entertaining once completed.
- Double garage with internal access.
- Framed and partially completed interior, giving you the freedom to finish it to your specifications.

The Perfect Project

With the structure already in place, this home presents a rare opportunity to create a custom masterpiece without starting from scratch. Whether you're looking to finish it for yourself or for resale, the potential here is undeniable.

Prime Location

- Situated in a growing and family-friendly neighbourhood.
- Close to schools, childcare centres, parks, and shopping precincts.
- Easy access to major roads and public transport, ensuring convenience for commuters.

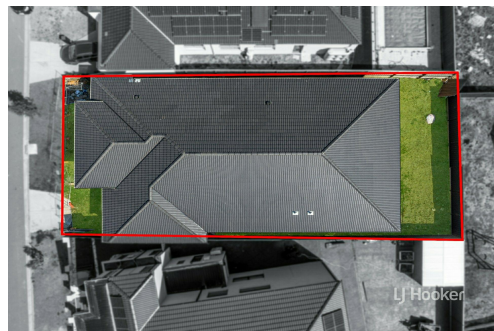
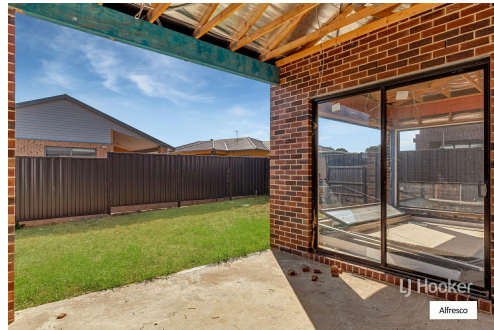
This is a blank canvas with endless possibilities. Take advantage of this unique chance to secure an unfinished home with immense potential. Contact us today to arrange a private inspection and discuss the possibilities for completing this remarkable home. Please direct all enquiries to Sally Long on 0477 437 281.

More About this Property

Property ID	7Q2HJS
Property Type	House
House Size	341 m2
Land Area	569 m2
Including	Study Toilets (4) Built-in-Robes Remote Garage

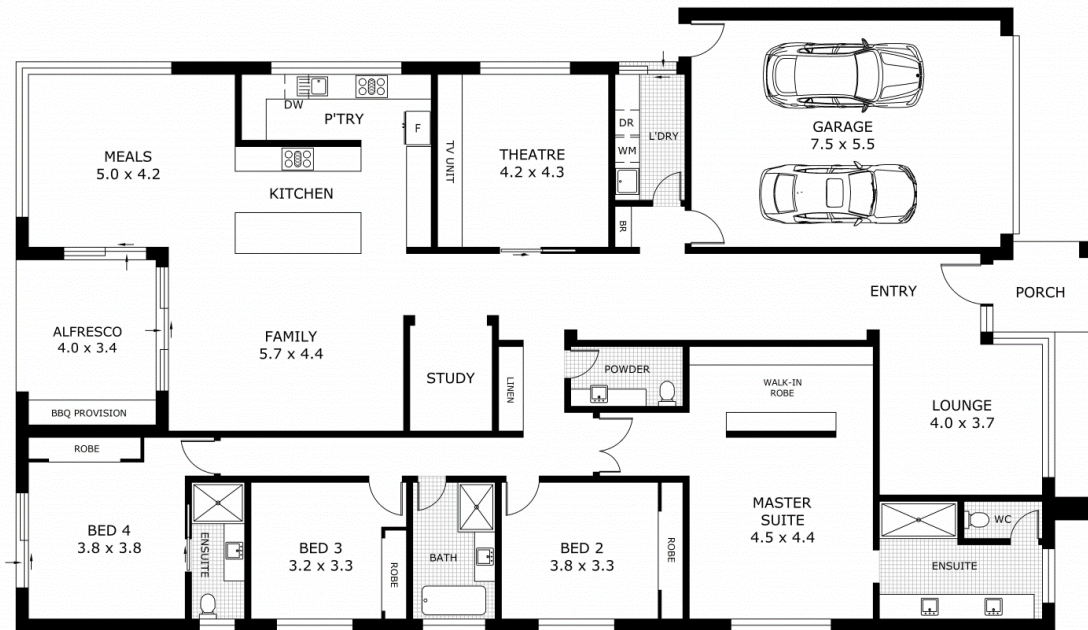
Sally Long 0477 437 281
 Licensed Real Estate Agent | sally.long@ljhooker.com.au
Gavin Henderson 0408 359 764
 Principal | ghenderson.broadford@ljhooker.com.au

LJ Hooker Broadford | Kilmore (03) 5784 2558
 1629 Broadford Wandong Road, BROADFORD VIC 3658
 broadford.ljhooker.com.au | broadford@ljhooker.com.au



Disclaimer: All information contained therein is gathered from relevant third parties sources. We cannot guarantee or give any warranty about the information provided. Interested parties must rely solely on their own enquiries.

LJ Hooker Broadford | Kilmore
(03) 5784 2558



Residence	- 280.5m ²
Garage	- 36.7m ²
Porch	- 5.4m ²
Alfresco	- 13.5m ²
Total	- 341.0m ²



Scale in metres. Indicative only. Dimensions are approximate. All information contained herein is gathered from sources we believe to be reliable. However we cannot guarantee its accuracy and interested parties should rely on their own enquiries.

6 Kingfisher Way, Wallan



LJ Hooker Broadford | Kilmore
(03) 5784 2558

Disclaimer: All information contained therein is gathered from relevant third parties sources. We cannot guarantee or give any warranty about the information provided. Interested parties must rely solely on their own enquiries.