



3 Mead Close, Wallan

Family Comfort in a Quiet Court: 3 Mead Close, Wallan

Positioned in a peaceful court location, this inviting home offers the ideal combination of space, comfort and convenience on a generous 624 sqm (approx.) block.

The light-filled floor plan includes three bedrooms and two bathrooms, with the main bedroom enjoying its own private ensuite and walk in robe, and the other two bedrooms having built-in robes. A spacious lounge flows to the open plan kitchen and meals area, creating a central hub for everyday family living.

Outdoors, the large back yard provides plenty of room for children, pets and entertaining - including an undercover alfresco dining area complete with cafe blinds - with scope to add your own touches over time. A garage and ample off-street parking add practicality, while the quiet court setting enhances the sense of privacy.

Perfectly positioned close to Wallan's schools, childcare, shops, cafes, parkland and V/Line train services, this is a home that balances lifestyle and convenience. Whether you're a young family, downsizer or investor, 3 Mead Close is an opportunity not to be missed. Please contact Sally Long on 0477 437 281 for all enquiries.

3 2 2

FOR SALE

Please Call

AGENTS

Sally Long
0477 437 281
sally.long@ljhooker.com.au

Gavin Henderson
0408 359 764
ghenderson.broadford@ljhooker.com.au

AGENCY

LJ Hooker Broadford | Kilmore
(03) 5784 2558

All information contained therein is gathered from relevant third parties sources.
We cannot guarantee or give any warranty about the information provided.
Interested parties must rely solely on their own enquiries.



MORE DETAILS

Property ID 7SZHJS
Property Type House
Land Area 624 m2
Including Toilets (2)

Sally Long 0477 437 281

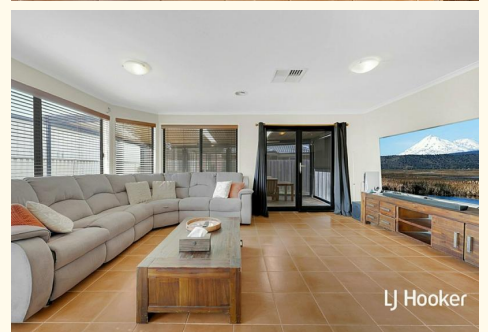
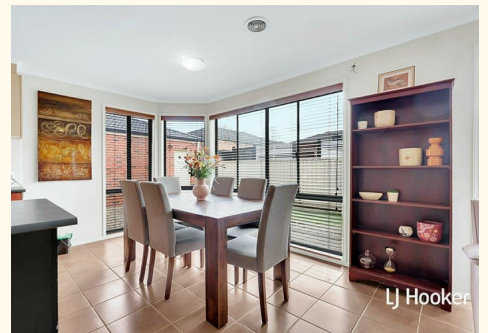
Licensed Real Estate Agent | sally.long@ljhooker.com.au

Gavin Henderson 0408 359 764

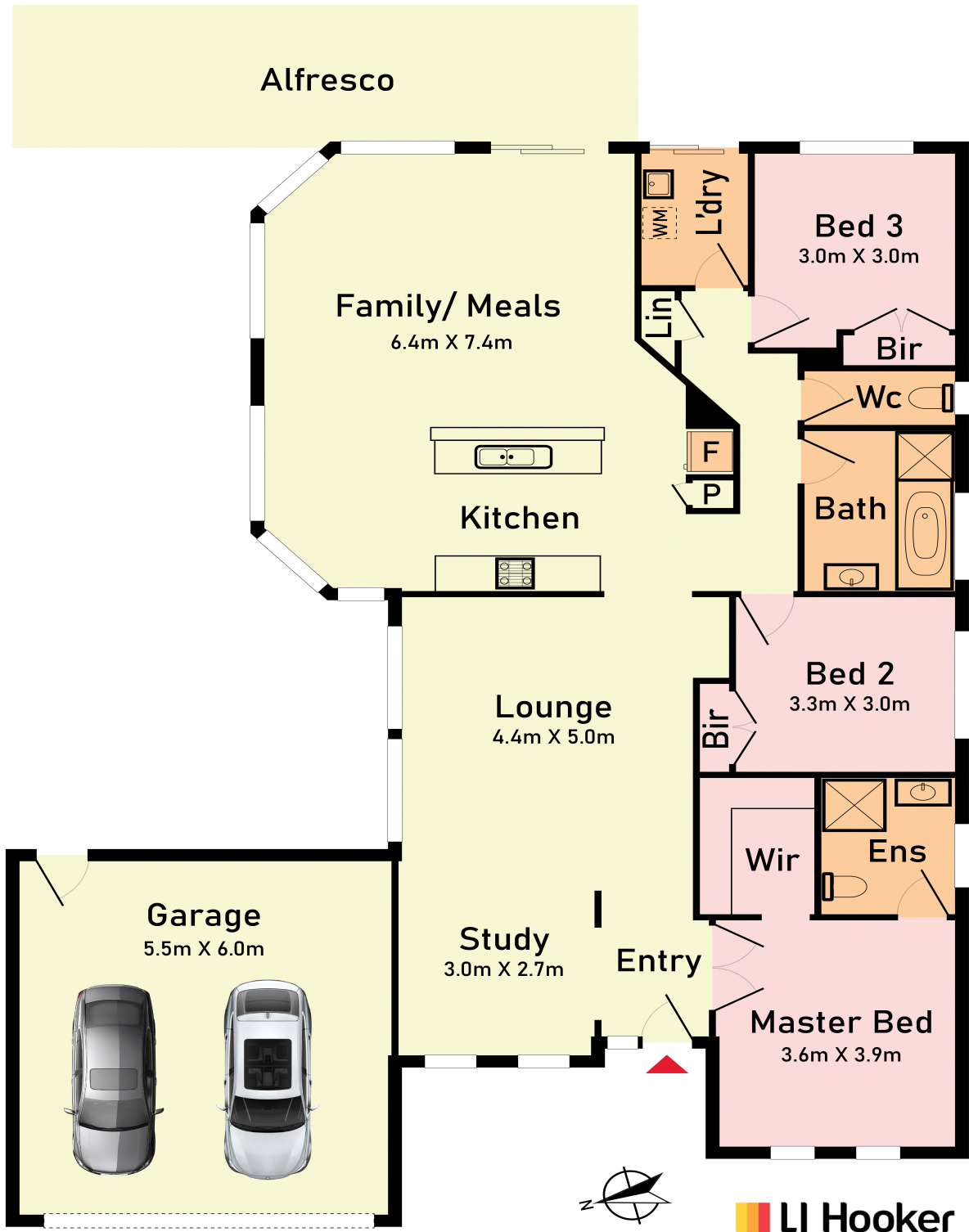
Principal | ghenderson.broadford@ljhooker.com.au

LJ Hooker Broadford | Kilmore (03) 5784 2558

1629 Broadford Wandong Road, BROADFORD VIC 3658
broadford.ljhooker.com.au | broadford@ljhooker.com.au



All information contained therein is gathered from relevant third parties sources.
We cannot guarantee or give any warranty about the information provided.
Interested parties must rely solely on their own enquiries.



3 Mead Close, Wallan

* Dimensions are approximate and for illustrative purposes only

All information contained therein is gathered from relevant third parties sources. We cannot guarantee or give any warranty about the information provided. Interested parties must rely solely on their own enquiries.