



LJ Hooker



LJ Hooker



LJ Hooker


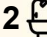
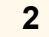
15 Periwinkle Crescent, Wallan

Where Family Life Meets Style and Comfort

Imagine coming home to a space that perfectly balances style, practicality, and comfort: 15 Periwinkle Crescent is exactly that. From the moment you arrive, the home's inviting facade and beautifully landscaped front garden hint at the thoughtful design waiting inside. Step through the front door and feel immediately at ease. Adjacent to the open plan kitchen, living, and meals area, a versatile second living space awaits - perfect for a cosy movie night, a children's retreat, or a quiet corner to unwind with a book or it could be used as a 4th bedroom. Just off the main living area, a dedicated study nook provides the ideal space for remote work, homework, or managing family life.

As you move into the heart of the home, the main living area welcomes you with an abundance of natural light and a seamless flow that encourages both everyday living and entertaining. The modern kitchen is a true showpiece: sleek cabinetry, quality appliances, and an expansive butler's pantry make meal preparation effortless, while providing ample space for storage and organisation. Family breakfasts, dinner parties, or a quick coffee with friends, this kitchen caters to every occasion.

From the living area, sliding doors open to the undercover alfresco, fitted with remote-controlled blinds for year-round enjoyment. Here,

3  2  2 

FOR SALE

Please Call

AGENTS

Sally Long
0477 437 281
sally.long@ljhooker.com.au

Gavin Henderson
0408 359 764
ghenderson.broadford@ljhooker.com.au

AGENCY

LJ Hooker Broadford | Kilmore
(03) 5784 2558

All information contained therein is gathered from relevant third parties sources. We cannot guarantee or give any warranty about the information provided. Interested parties must rely solely on their own enquiries.



you can host summer barbecues, watch the kids play in the low-maintenance back yard, or simply enjoy a quiet evening outdoors - all without the hassle of upkeep.

Each of the three bedrooms boasts walk-in robes, giving everyone their own space. The master suite enjoys privacy at the front of the home and comes complete with a stylish ensuite, while Bedroom 3 features a clever additional study or toy room - perfect for children, a mini office, or a creative space. The remaining bedrooms share a modern bathroom with a deep soaking tub and separate shower. Comfort is guaranteed no matter the season with heating and cooling throughout, while solar panels add a smart, energy-efficient touch. Practicality is seamlessly integrated with a double remote garage with internal access, providing convenience and peace of mind. Set on a 448 sqm (approx.) block, the property offers just the right amount of outdoor space to enjoy without overwhelming maintenance: perfect for busy families or anyone seeking a low-stress lifestyle.

Located in one of Wallan's most desirable pockets, you're moments from schools, parks, shops, and the town centre, while still enjoying easy access to Melbourne via the Hume Freeway or Wallan train station.

15 Periwinkle Crescent isn't just a house: it's a home where memories are made, comfort is effortless, and every detail has been designed with your family in mind. Step inside and experience the lifestyle you've been waiting for.

For a private inspection or to discover more, contact Sally Long at LJ Hooker Broadford | Kilmore | Wallan on 0477 437 281.

MORE DETAILS

Property ID	7TWHJS
Property Type	House
Including	Study
	Ducted Cooling
	Ducted Heating
	Toilets (2)
	Dishwasher
	Floorboards
	Built-in-Robes
	Remote Garage
	Full Butlers Pantry
	Walk in Robes to all bedrooms

Sally Long 0477 437 281

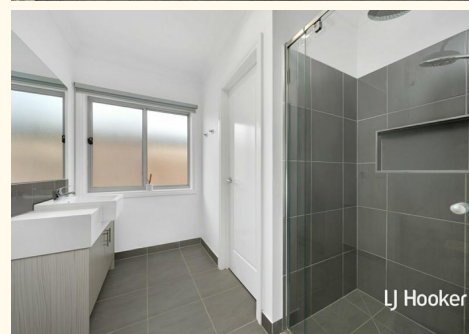
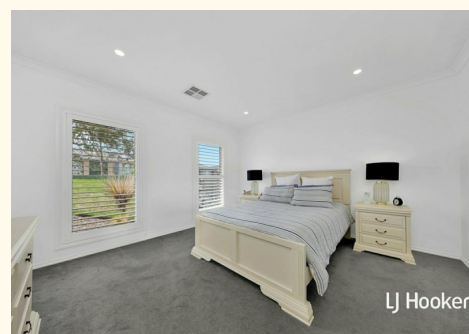
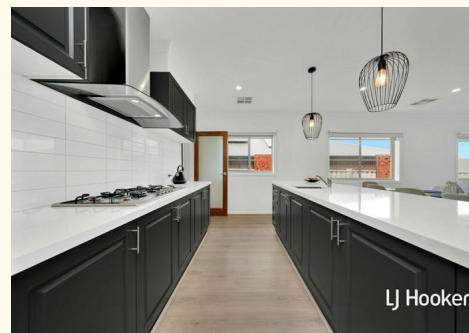
Licensed Real Estate Agent | sally.long@ljhooker.com.au

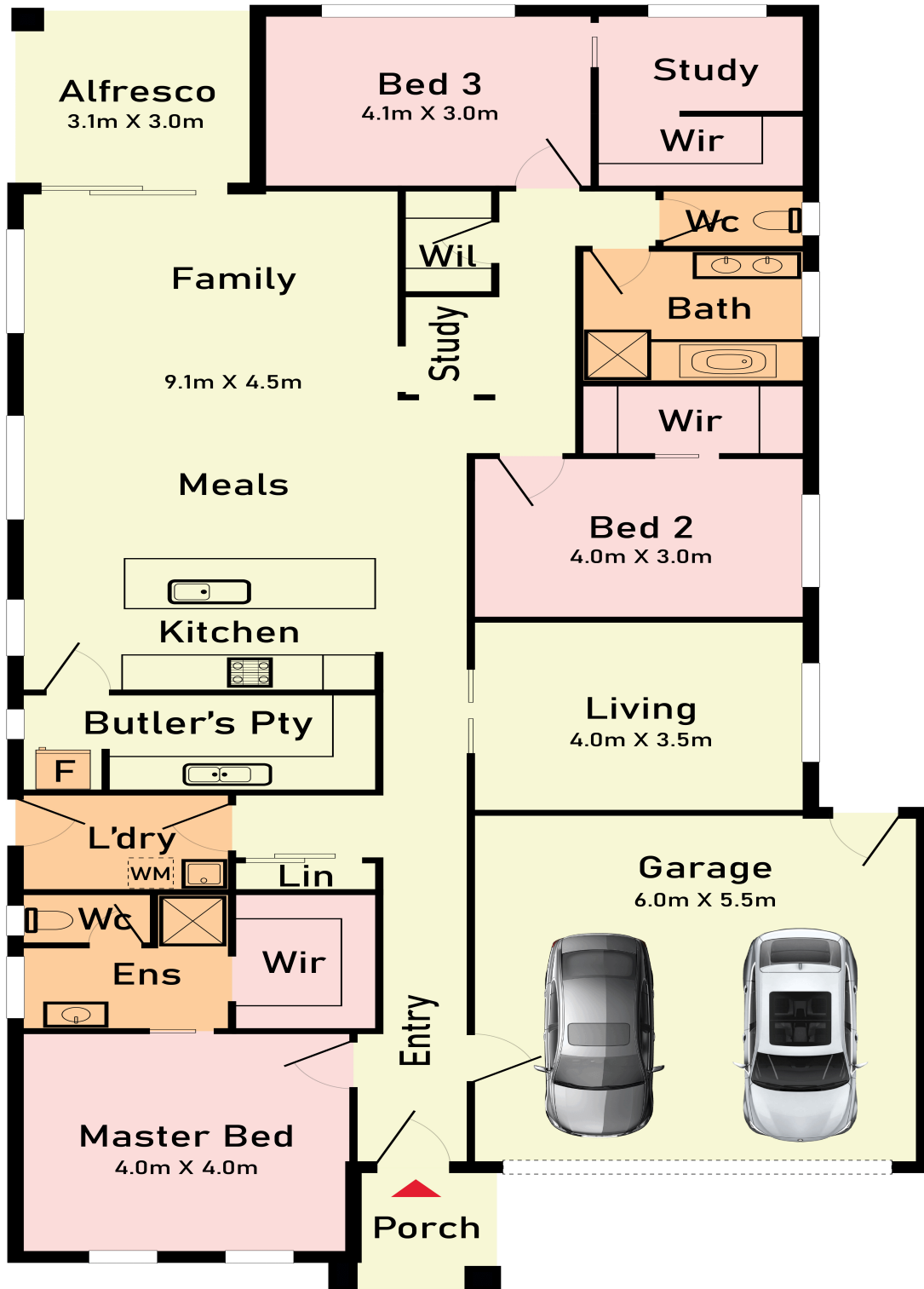
Gavin Henderson 0408 359 764

Principal | ghenderson.broadford@ljhooker.com.au

LJ Hooker Broadford | Kilmore (03) 5784 2558

1629 Broadford Wandong Road, BROADFORD VIC 3658
broadford.ljhooker.com.au | broadford@ljhooker.com.au





15 Periwinkle Crescent, Wallan

* Dimensions are approximate and for illustrative purposes only



 LJ Hooker

All information contained therein is gathered from relevant third parties sources.
We cannot guarantee or give any warranty about the information provided.
Interested parties must rely solely on their own enquiries.

 LJ Hooker