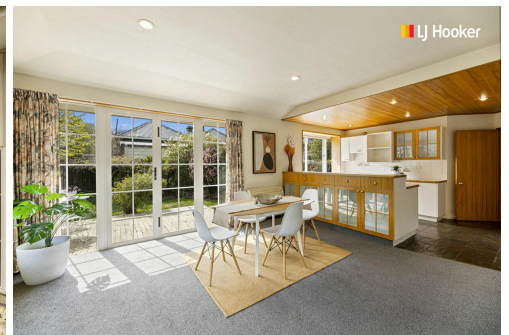


SOLD



Wakari, 147A Shetland Street

Make Your Mark on this Spacious Home

Auction Location: LJ Hooker Dunedin Office, 63 Musselburgh Rise

This lovely Oamaru stone home is perfectly situated in a family-friendly neighbourhood, combining comfort, convenience and huge potential to add value.

Step through the front door into a spacious entryway that sets the tone for what's to come. This home features two generous living areas that bathe in all-day sun. Whether you're hosting family gatherings or enjoying cosy nights in, you'll appreciate the versatility of these spaces. The open-plan design flows effortlessly, making it easy to entertain guests or keep an eye on the kids while preparing meals. French doors lead you out to a sunny deck, a perfect spot for morning coffee or evening barbeques and the open plan kitchen dining has ample storage, plenty of counter space and is ideal for family meals and culinary adventures.

Offering three spacious bedrooms with the main having its own ensuite and the additional bedrooms are perfect for family members or guests, and can easily be transformed into a

3 

2 

2 

For Sale
Auction

View
ljhooker.co.nz/3NTZGDS

Contact
Carol Dalton
021 774 000
carol@ljhdunedin.co.nz

home office or hobby space. The family bathroom provides a bath and separate shower along with an adjacent separate toilet designed to accommodate busy mornings. The separate laundry room adds a level of convenience, keeping household chores organised and out of sight.

For those who love DIY projects or need extra storage, the double garage comes with a workshop area, providing all the space you need for your hobbies and tools.

Location is everything and this home doesn't disappoint! You'll find yourself just minutes from top-rated schools, kindergartens, local shops, and public transport. Enjoy easy access to everything you need and with just a five-minute drive to the city centre you're never far from the action. Whether it's dining, shopping, or cultural experiences, everything is within easy reach.

This early 1990's property in original condition also provides easy wheelchair access and offers a comfortable and spacious home on a compact, easy-care section. There is great potential to add more value for future reward so whether you're looking to invest or create lasting family memories, this is a must-see!

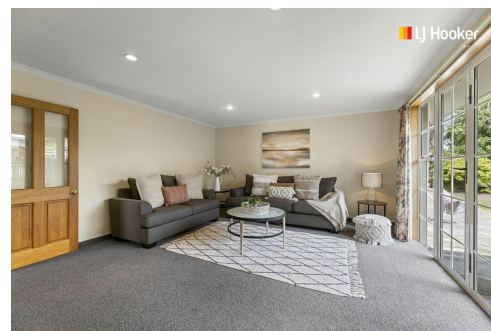
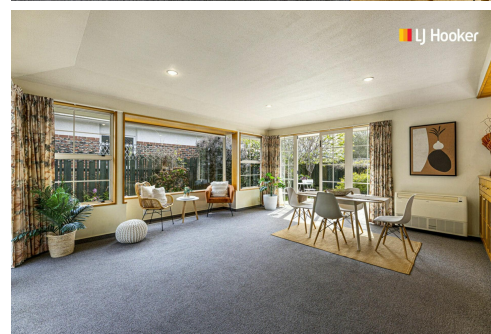
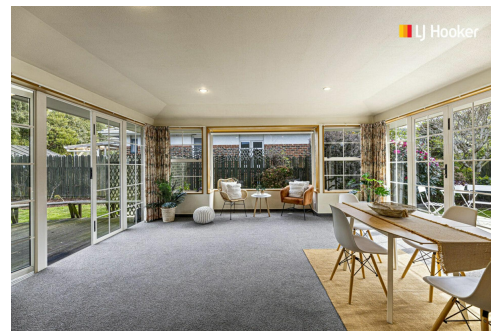
See you at the open home or call me now to arrange a viewing and explore the endless possibilities this home has to offer.

More About this Property

Property ID	3NTZGDS
Property Type	House
Land Area	660 m ²
Licensed Real Estate Agents (REAA2008)	

Carol Dalton 021 774 000
Licensee | carol@ljhdunedin.co.nz

LJ Hooker Dunedin (03) 470 1370
Wayne Graham Realty Ltd
63 Musselburgh Rise, DUNEDIN 9013
dunedin.ljhooker.co.nz | dunedin@ljhdunedin.co.nz



Disclaimer: All information contained therein is gathered from relevant third parties sources. We cannot guarantee or give any warranty about the information provided. Interested parties must rely solely on their own enquiries.

LJ Hooker Dunedin
(03) 470 1370
Wayne Graham Realty Ltd