



## Waiuku, 7/685 Karioitahi Road

### SEASIDE STUNNER

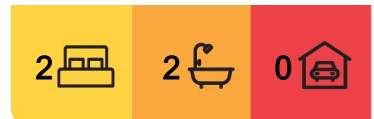
Situated on the rough and ready West Coast in Castaways Resort sits this beautifully appointed unit which is nestled amongst the tranquil clifftops. This unique seaside opportunity is waiting here for astute investors wanting to live the resort lifestyle. The Chalets are not intended for permanent residence

When you know holidays can be stressful put your mind at ease knowing everything here is looked after for you while you aren't there, you can walk in, drop your bags then sit back and relax looking out over the ever-changing West Coast Ocean.

This fully furnished 2 double bedroom and newly renovated 2 bathroom holiday home is perfectly positioned and has unobstructed views of the breath taking Tasman Sea. Fitted out with modern appliances and chattels this property is a



**Disclaimer:** All information contained therein is gathered from relevant third parties sources. We cannot guarantee or give any warranty about the information provided. Interested parties must rely solely on their own enquiries.



#### For Sale

Price By Negotiation

#### View

By Appointment

#### Contact

##### Snow Mooney

021 404 578

snow.pukekohe@ljhooker.co.nz

##### Sonya Bloomfield

021 889 753

sonya.pukekohe@ljhooker.co.nz

#### LJ Hooker Pukekohe

(09) 239 1356

Realty 2000 Ltd

must for buyers looking for that X factor in luxury living.

The Resort also is the home of the award-winning Castaways Restaurant & Bar and the gorgeous Bersantai Day Spa.

All this is only 70km from Auckland CBD and 114 km from Hamilton.

The property is under management agreement with Castaways Resort. The chalet will be managed and rented out while not in use.

Get in touch with Snow Mooney or Sonya Bloomfield today to know more!

View only by appointment.

PLEASE NOTE: Specified floor and land area sizes have been obtained from sources such as Property Smart, Auckland Council (LIM) or Title documents. They have not been measured by the Salesperson or LJ Hooker - Realty 2000 Limited. We recommend you seek your own independent legal advice if these sizes are material to your purchasing decision.

## More About this Property

**Property ID** 7YPHFY

**Property Type** House

**Licensed Real Estate Agents (REAA2008)**

### Snow Mooney

Residential and Commercial Marketing Consultant |  
snow.pukekohe@ljhooker.co.nz

### Sonya Bloomfield

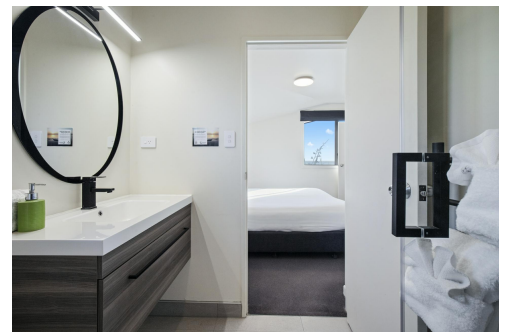
Sales & Marketing Consultant | sonya.pukekohe@ljhooker.co.nz

### LJ Hooker Pukekohe (09) 239 1356

Realty 2000 Ltd

7 Paerata Road, PUKEKOHE NZ 2120

pukekohe.ljhooker.co.nz | pukekohe@ljhooker.co.nz



**Disclaimer:** All information contained therein is gathered from relevant third parties sources. We cannot guarantee or give any warranty about the information provided. Interested parties must rely solely on their own enquiries.

**LJ Hooker Pukekohe**  
**(09) 239 1356**

Realty 2000 Ltd