

Waimate, 617 Waihaorunga Back Road

A Tranquil Rural Retreat

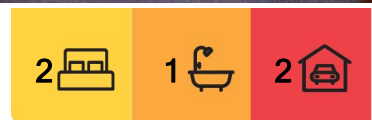
Deadline Sale: Wednesday 22nd January 2025 at 2pm (unless sold prior).

Set on an expansive 4.0-hectare block, in sunny Waihaorunga this property offers ample space for hobby farming, outdoor activities, or simply enjoying a peaceful lifestyle. Fully fenced, it includes a two-bay shed with an attached secure storeroom complete with power, ensuring plenty of storage and utility options.

Adding to its charm, a nearby creek and an assortment of fruit trees enhance the rural appeal.

The home features one double bedroom and sunroom being used for a second bedroom, a spacious separate lounge and open plan kitchen and dining great for family gatherings, bathroom and toilet are separate for convenience.

Step outside to enjoy the wrap-around deck to follow the sun which offers picturesque views of the surrounding pastures and beyond. Approximately 35-minute drive to the town of Waimate.



For Sale
Negotiation

View
l.jhooker.co.nz/831GNG

Contact
Elaine Homer
021 02393111
ehomer.waimate@l.jhooker.co.nz



Disclaimer: All information contained therein is gathered from relevant third parties sources. We cannot guarantee or give any warranty about the information provided. Interested parties must rely solely on their own enquiries.

LJ Hooker Waimate
(03) 689 7974
Enting Real Estate Limited

This property truly combines the best of rural living with practicality and charm. Don't miss the chance to make this serene retreat your own.

Disclaimer:

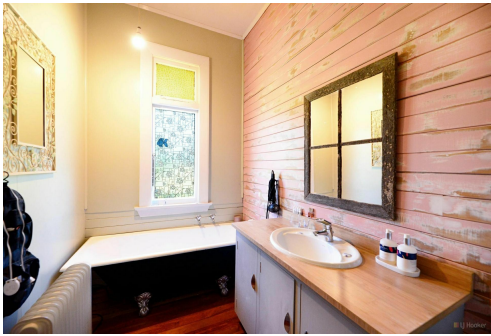
This information has been supplied by the owners and Corelogic. LJ Hooker Timaru, Geraldine and Waimate are merely passing over this information as supplied to us. We cannot guarantee its accuracy and reliability as we have not checked, audited or reviewed the information. All intending purchasers are advised to conduct their own due diligence investigation into this information. To the maximum extent permitted by law, we do not accept any responsibility to any part for the accuracy or use of the information herein. Enting Real Estate Limited Licensed (REAA 2008).

More About this Property

Property ID	831GNG
Property Type	House
House Size	130 m2
Land Area	4 hectare
Licensed Real Estate Agents (REAA2008)	

Elaine Homer 021 02393111
Property Consultant | ehomer.waimate@ljhooker.co.nz

LJ Hooker Waimate (03) 689 7974
Enting Real Estate Limited
83 Queen Street, WAIMATE 7924
waimate.ljhooker.co.nz | Waimate@ljhooker.co.nz



Disclaimer: All information contained therein is gathered from relevant third parties sources. We cannot guarantee or give any warranty about the information provided. Interested parties must rely solely on their own enquiries.

LJ Hooker Waimate
(03) 689 7974
Enting Real Estate Limited