

49 Rhodes Street, Waimate

3  1  1 

Well-Maintained Family Home

FOR SALE

Enquiries Over \$415,000

AGENTS

Elaine Homer

021 02393111

ehomer.waimate@ljhooker.co.nz

AGENCY

LJ Hooker Waimate

(03) 689 7974

Enting Real Estate Limited

This solid permanent material home offers comfort and convenience with two double bedrooms and one single, all with built-in wardrobes. Enjoy the benefit of a brand-new kitchen and modern bathroom complete with shower, vanity, toilet, and heated towel rail. The separate lounge features a cosy wood burner, while the large separate laundry and second toilet add practicality for busy households. Freshly painted inside and out, the home also boasts new carpet and vinyl flooring along with updated wiring. Outside, you'll find a single garage, garden shed, and woodshed. The fully fenced backyard provides a safe space for children or pets to play.

Ready for you to move in and enjoy!

Disclaimer:

This information has been supplied by the owners and Corelogic. LJ Hooker Timaru, Geraldine and Waimate are merely passing over this information as supplied to us. We cannot guarantee its accuracy and reliability as we have not checked, audited or reviewed the information. All intending purchasers are advised to conduct their own due diligence investigation into this information. To the maximum extent permitted by law, we do not accept any responsibility to any part for the accuracy or use of the information herein. Enting Real Estate Limited Licensed (REAA 2008).

All information contained therein is gathered from relevant third parties sources. We cannot guarantee or give any warranty about the information provided. Interested parties must rely solely on their own enquiries.

 **LJ Hooker**

MORE DETAILS

Property ID 8CJGNG
Property Type House
House Size 92 m2
Land Area 1012 m2
Licensed Real Estate Agents (REAA2008)

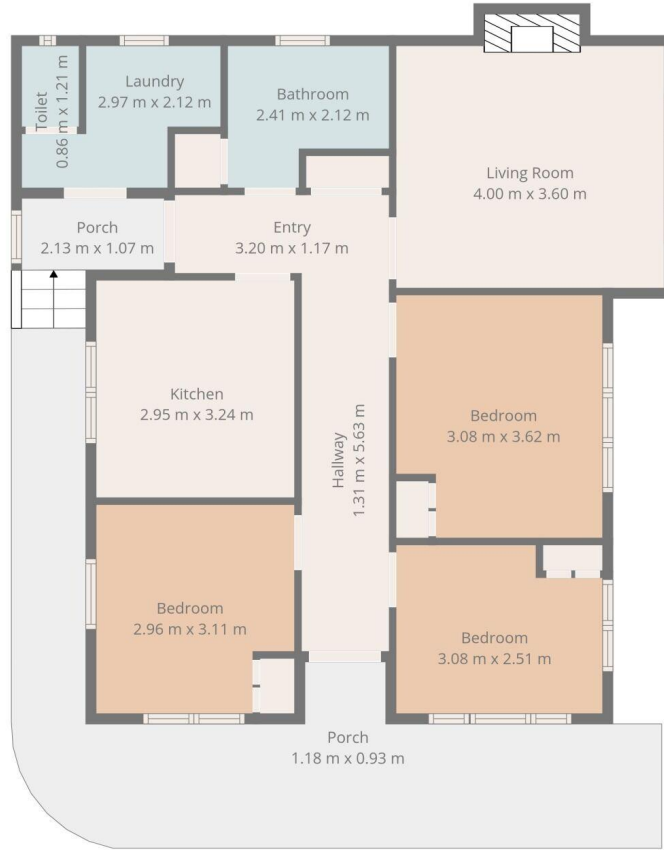
Elaine Homer 021 02393111

Property Consultant | ehomer.waimate@ljhooker.co.nz

LJ Hooker Waimate (03) 689 7974

Enting Real Estate Limited
74 Queen Street, WAIMATE 7924
waimate.ljhooker.co.nz | Waimate@ljhooker.co.nz





TOTAL: 78 m²
FLOOR 1: 78 m²
EXCLUDED AREAS: PORCH: 28 m², FIREPLACE: 1 m², WALLS: 6 m²

Floor Plan Created By Cubicasa App. Measurements Deemed Highly Reliable But Not Guaranteed.



All information contained therein is gathered from relevant third parties sources.
 We cannot guarantee or give any warranty about the information provided.
 Interested parties must rely solely on their own enquiries.