



35 Allan Street, Waimate


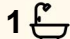
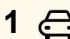
Relax and Retreat

This carefully curated 1950's home sits on its own slice of paradise. With a spacious section full of potential including fruit trees, raised beds and a neat workshop to bring all your ideas to life.

Inside, the open plan kitchen and living area provides a welcome retreat with a log burner to keep you cosy in the colder months. This home offers three double bedrooms, with one bedroom having access out to the enclosed verandah - offering extra living space year round. With the quiet, sought after location of Allan Street, the privacy, space and potential here, there's an awful lot to like!

Disclaimer:

This information has been supplied by the owners and Corelogic. LJ Hooker Timaru, Geraldine and Waimate are merely passing over this information as supplied to us. We cannot guarantee its accuracy and reliability as we have not checked, audited or reviewed the information. All intending purchasers are advised to conduct their own due diligence investigation into this information. To the maximum extent permitted by law, we do not accept any responsibility to any part for the accuracy or use of the information herein. Enting Real Estate Limited Licensed (REAA 2008).

3  1  1 

FOR SALE
\$460,000

VIEW
By Appointment

AGENTS
Lyndsey Davis
027 252 8277
lyndsey@ljhwaimate.co.nz

AGENCY
LJ Hooker Waimate
(03) 689 7974
Enting Real Estate Limited

MORE DETAILS

Property ID 8DBGNG
Property Type House
House Size 90 m2
Land Area 1113 m2
Including Dishwasher
Licensed Real Estate Agents (REAA2008)

Lyndsey Davis 027 252 8277

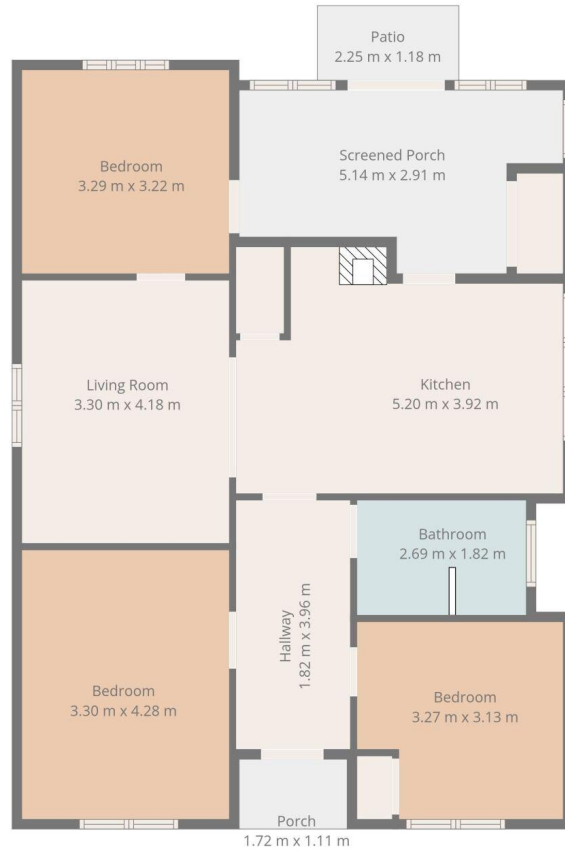
Licensed Salesperson | lyndsey@ljhwaimate.co.nz

LJ Hooker Waimate (03) 689 7974

Enting Real Estate Limited
74 Queen Street, WAIMATE 7924
waimate.ljhooker.co.nz | Waimate@ljhooker.co.nz



All information contained therein is gathered from relevant third parties sources.
We cannot guarantee or give any warranty about the information provided.
Interested parties must rely solely on their own enquiries.



TOTAL: 84 m²
 1st floor: 84 m²
 EXCLUDED AREAS: PORCH: 2 m², SCREENED PORCH: 12 m², PATIO: 3 m²,
 WALLS: 8 m²

Floor Plan Created By Cubicasa App. Measurements Deemed Highly Reliable But Not Guaranteed.

