



## Waimate, 27/449 Fisheries Road

### Escape to the Glenavy Fishing Hut: Your Getaway by the Waitaki River

Almost at the end of Fisheries Road, sits this cozy two bedroom hut, furnished and ready to go. Just moments from the mouth of the Waitaki River, you'll have easy access to some of the best fishing and white baiting spots in the region, ensuring an unforgettable experience.

Whether you're casting your line in search of a catch or simply soaking in the tranquillity, this Glenavy Fishing Hut blends classic Kiwi charm with modern comfort. The open-plan kitchen and living space provide the ideal setting to relax after a day on the water, while the patio is perfect for enjoying a BBQ with the family.

Fully furnished and equipped with everything you need for a comfortable stay, this hut is perfect for solo adventurers, families, or small groups. Just pack your bags and, kick back, and enjoy all the beauty and bounty the area has to offer.

Please note, this hut is for temporary stays and no dogs are allowed. Also, the bathroom is adjacent ablution block.



**Disclaimer:** All information contained therein is gathered from relevant third parties sources.

We cannot guarantee or give any warranty about the information provided. Interested parties must rely solely on their own enquiries.

2

1

0

**For Sale**

Enquiries Over \$45,000

**View**

By Appointment

**Contact**

**Ruth Burke**

027 280 6352

ruth@ljhwaimate.co.nz

**Elaine Homer**

021 02393111

ehomer.waimate@ljhooker.co.nz

**LJ Hooker Waimate**

**(03) 689 7974**

Enting Real Estate Limited



Conditions of buying a crib/hut: Must have a new Zealand Residential address. Payment in full upon settlement by cash. Finance not available on these properties. Please note that these are holiday homes for periodic stays for a maximum of 3 months per year. A license is needed for recreational fishing.

**Disclaimer:**

This information has been supplied by the owners and Corelogic. LJ Hooker Timaru, Geraldine and Waimate are merely passing over this information as supplied to us. We cannot guarantee its accuracy and reliability as we have not checked, audited or reviewed the information. All intending purchasers are advised to conduct their own due diligence investigation into this information. To the maximum extent permitted by law, we do not accept any responsibility to any part for the accuracy or use of the information herein. Enting Real Estate Limited Licensed (REAA 2008).

## More About this Property

<b>Property ID</b>	83DGNG
<b>Property Type</b>	House
<b>Licensed Real Estate Agents (REAA2008)</b>	

**Ruth Burke 027 280 6352**

Licensed Branch Manager | [ruth@ljhwaimate.co.nz](mailto:ruth@ljhwaimate.co.nz)

**Elaine Homer 021 02393111**

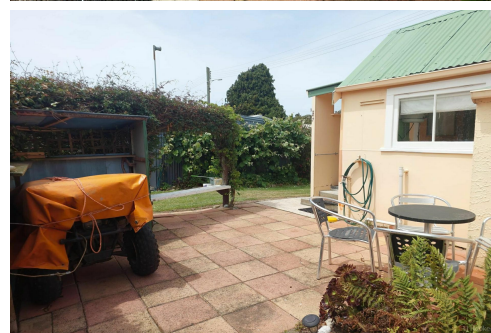
Property Consultant | [ehomer.waimate@ljhooker.co.nz](mailto:ehomer.waimate@ljhooker.co.nz)

**LJ Hooker Waimate (03) 689 7974**

Enting Real Estate Limited

83 Queen Street, WAIMATE 7924

[waimate.ljhooker.co.nz](mailto:waimate.ljhooker.co.nz) | [Waimate@ljhooker.co.nz](mailto:Waimate@ljhooker.co.nz)



**Disclaimer:** All information contained therein is gathered from relevant third parties sources.

We cannot guarantee or give any warranty about the information provided. Interested parties must rely solely on their own enquiries.

**LJ Hooker Waimate**

**(03) 689 7974**

Enting Real Estate Limited