

Waimataitai, C/4 Eversley Street

Charming 3-Bed, 2-Bath Home with Garage | House and Land Package

Discover your dream home with this stunning three-bedroom, two-bathroom house and land package, conveniently located near the vibrant showgrounds complex and Caroline Bay. Set for completion next year. This modern residence is located on a back section, it boasts a spacious open plan kitchen, living and dining with great indoor-outdoor flow, and a single-car garage. Perfect for families or professionals seeking comfort and convenience. Don't miss out on the opportunity to make this home yours!

Disclaimer:

This information has been supplied by the owners and Corelogic. LJ Hooker Timaru, Geraldine and Waimate are merely passing over this information as supplied to us. We cannot guarantee its accuracy and reliability as we have not checked, audited or reviewed the information. All intending purchasers are advised to conduct their own due diligence investigation into this information. To the maximum extent permitted by law, we do not



Disclaimer: All information contained therein is gathered from relevant third parties sources. We cannot guarantee or give any warranty about the information provided. Interested parties must rely solely on their own enquiries.

3

2

1

For Sale

Enquiries Over \$589,000

View

By Appointment

Contact

Ben Groundwater

027 415 6405

ben.timaru@ljjhooker.co.nz

Joelle Snook

027 844 5432

joelle.timaru@ljjhooker.co.nz

LJ Hooker Timaru

(03) 688 3029

Enting Real Estate Limited

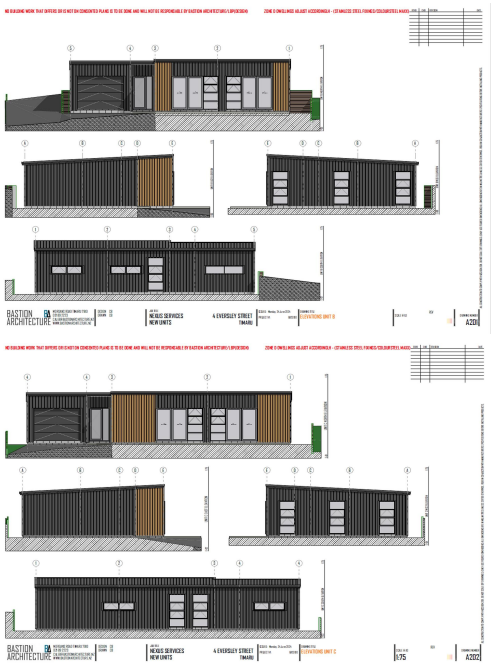
accept any responsibility to any part for the accuracy or use of the information herein.
Enting Real Estate Limited Licensed (REAA 2008).

More About this Property

Property ID	152PGTA
Property Type	House
House Size	138.53 m2
Land Area	340 m2
Including	Ensuite
Licensed Real Estate Agents (REAA2008)	

Ben Groundwater 027 415 6405
Property Consultant | ben.timaru@ljhooker.co.nz
Joelle Snook 027 844 5432
Property Consultant | joelle.timaru@ljhooker.co.nz

LJ Hooker Timaru (03) 688 3029
Enting Real Estate Limited
51 Church Street, TIMARU 7910
timaru.ljhooker.co.nz | timaru@ljhooker.co.nz



Disclaimer: All information contained therein is gathered from relevant third parties sources.
We cannot guarantee or give any warranty about the information provided. Interested parties must rely solely on their own enquiries.

LJ Hooker Timaru
(03) 688 3029
Enting Real Estate Limited