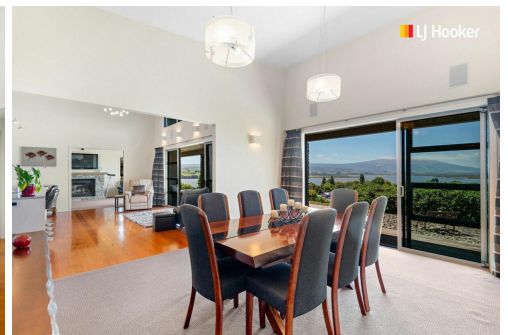
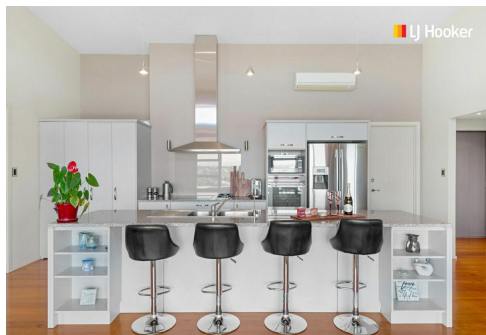
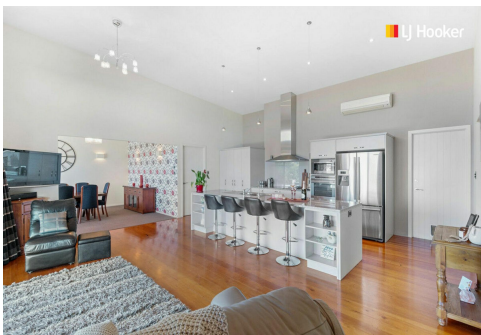


**SOLD**



## Waihola, A/21 Castle Street

Absolutely Stunning Lake Views!!!

Welcome to 21A Castle Street, Waihola, where elevated living takes on a whole new meaning.

Nestled down a driveway, this 2000's-built home offers the perfect combination of privacy, modern luxury, and practicality-it's an absolute must-see!

Let's start with the stunning elevated views that make you feel like you're truly on top of the world. Whether relaxing on the hardwood deck or strolling along the walkways below, you'll appreciate the serenity this property offers. Built on two titles it's perfect for avid gardeners or those who value the charm of established trees, and the hothouse and raised veggie gardens provide all the space you need to nurture your green thumb.

Step inside, and you'll discover a home that truly has it all. The layout is thoughtful and spacious, with 4 bedrooms, including a large master suite privately positioned at one end

4 

2 

2 

**For Sale**  
Negotiation

**View**  
[ljhooker.co.nz/71MGEX](http://ljhooker.co.nz/71MGEX)

**Contact**  
**Paul Anderton**  
0273 413 733  
[paul@ljhmosgiel.co.nz](mailto:paul@ljhmosgiel.co.nz)  
**Caitlin Anderton**  
021 0823 2583  
[caitlin@ljhmosgiel.co.nz](mailto:caitlin@ljhmosgiel.co.nz)



of the home. The master features stunning views, a walk-in robe, and an ensuite complete with under-tile heating. The other three good-sized bedrooms all come with excellent storage. Nearby, you'll find a main bathroom with a spa bath, shower, and under-tile heating, plus a separate toilet for added convenience.

The living spaces are equally impressive. The separate formal lounge boasts high ceilings and a gas fire, creating a cozy yet elegant atmosphere, while the large dining area, also with high ceilings, is perfect for entertaining. The good-sized kitchen offers ample storage, ensuring you'll never run out of space for your culinary adventures.

Practical features abound, with two heat pumps to keep the home comfortable year-round. There's even an office nook tucked away in the hallway, just outside the master bedroom, making it ideal for work-from-home arrangements.

The internal-access double garage houses the laundry and a convenient third toilet, adding even more functionality to this incredible home.

The home's exterior is a striking mix of schist, linea, and plaster, perfectly blending style with durability, and with low-maintenance landscaping and plenty of off-street parking, this property is designed to make life easy.

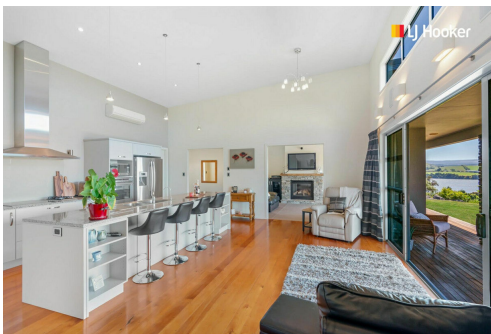
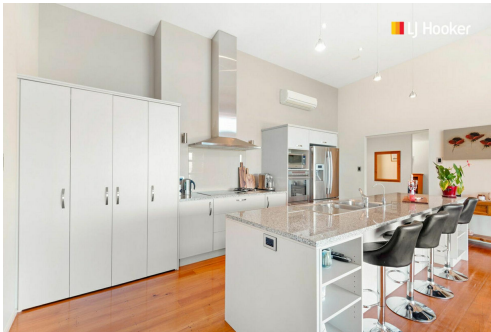
Whether you're a family, a couple, or a gardening enthusiast, 21A Castle Street offers a lifestyle that's hard to beat. Don't miss your chance to call this extraordinary property home.

## More About this Property

Property ID	71MGEX
Property Type	House
House Size	250 m2
Land Area	2024 m2
Licensed Real Estate Agents (REAA2008)	

**Paul Anderton 0273 413 733**  
Licensee | paul@ljhmosgiel.co.nz  
**Caitlin Anderton 021 0823 2583**  
Licensee | caitlin@ljhmosgiel.co.nz.

**LJ Hooker Mosgiel (03) 489 6800**  
Wayne Graham Realty Ltd  
9 Factory Road, MOSGIEL 9024  
mosgiel.ljhooker.co.nz | mosgiel@ljhmosgiel.co.nz



**Disclaimer:** All information contained therein is gathered from relevant third parties sources. We cannot guarantee or give any warranty about the information provided. Interested parties must rely solely on their own enquiries.

**LJ Hooker Mosgiel**  
**(03) 489 6800**  
Wayne Graham Realty Ltd