



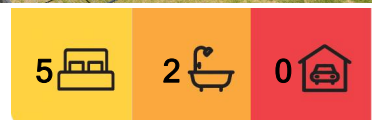
## Waihi Beach, 281 Seaforth Road

### Coastal Escape with Income Potential

Dreaming of the ultimate summer escape?

This versatile holiday home is perfectly positioned just one row back from the pristine shores of Waihi Beach, offering sea views and an easy stroll to the sand and surf, just minutes away. The fully fenced section offers privacy and safety for children and pets, while the layout is designed for hosting extra guests and family with potential added income.

Upstairs embraces you with a charming warmth as you soak up the sun and outlook from the child friendly spacious deck. Two bi-fold doors allow easy indoor-outdoor flow from the open plan kitchen, dining and living area. The cathedral ceiling and wooden floors add to the feeling of space, inviting you to relax and enjoy the coastal lifestyle. There are two bedrooms, and a family bathroom with separate toilet and laundry on this level. Downstairs is self contained with 3 bedrooms, original Bach kitchen and lounge dining area with



**For Sale**  
\$1,575,000

**View**  
[ljhooker.co.nz/CJAGGE](https://ljhooker.co.nz/CJAGGE)

**Contact**  
**Steve Bowen**  
02041382332  
[steve.waihibeach@ljhooker.co.nz](mailto:steve.waihibeach@ljhooker.co.nz)



**Disclaimer:** All information contained therein is gathered from relevant third parties sources. We cannot guarantee or give any warranty about the information provided. Interested parties must rely solely on their own enquiries.

**LJ Hooker Waihi Beach**  
**(07) 863 5801**  
Gary Alway Real Estate Limited



screened patio on one side and large deck on the other. Set back from the road, there is plenty of off-street parking for cars and boat, with easy-care lawn for playing or pitching tents.

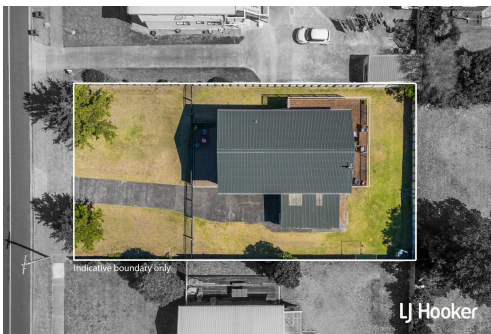
Don't miss this opportunity to secure an authentic slice of Waihi Beaches coastal charm and create lasting memories with family and friends. A perfect kiwi getaway with added potential for extra income while enjoying life at the beach.

## More About this Property

Property ID	CJAGGE
Property Type	House
House Size	222 m2
Land Area	809 m2
Licensed Real Estate Agents (REAA2008)	

**Steve Bowen 02041382332**  
Sales Consultant | [steve.waihibeach@ljhooker.co.nz](mailto:steve.waihibeach@ljhooker.co.nz)

**LJ Hooker Waihi Beach (07) 863 5801**  
Gary Alway Real Estate Limited  
27 Wilson Road, WAIHI BEACH 3611  
[waihibeach.ljhooker.co.nz](mailto:waihibeach.ljhooker.co.nz) | [waihibeach@ljhooker.co.nz](mailto:waihibeach@ljhooker.co.nz)



**Disclaimer:** All information contained therein is gathered from relevant third parties sources. We cannot guarantee or give any warranty about the information provided. Interested parties must rely solely on their own enquiries.

**LJ Hooker Waihi Beach**  
**(07) 863 5801**  
Gary Alway Real Estate Limited