

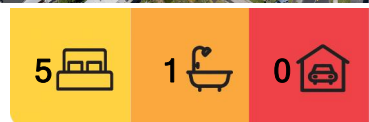
Waihi Beach, 25 Hanlen Avenue

Endless Potential

Nestled in the sought-after location of Waihi Beach, this property presents a unique opportunity for buyers. Featuring five double bedrooms. The home includes one bathroom and an additional toilet, ensuring comfort for larger families or groups. The functional kitchen flows into the open-plan living and dining area, creating a welcoming space perfect for socialising. A wood burner adds a cosy touch, keeping the home warm during the cooler months.

Positioned on an elevated section, with a peak of Waihi Beach the property boasts picturesque views of the Kaimai Ranges, offering breathtaking sunsets. The home's prime location also allows for easy walking access to the beach, the Island View shops, and the beloved Surf Shack Café, making day-to-day living both enjoyable and practical.

The section is partially fenced, providing privacy and a sense of security, while a double garage offers ample space for parking and storage. Whether you're seeking a holiday



For Sale

Price by Negotiation

View

By Appointment

Contact

Sarah Trethewey

027 577 6665

sarah.waihibeach@ljhooker.co.nz



Disclaimer: All information contained therein is gathered from relevant third parties sources.

We cannot guarantee or give any warranty about the information provided. Interested parties must rely solely on their own enquiries.

LJ Hooker Waihi Beach
(07) 863 5801

Gary Alway Real Estate Limited

retreat, an investment property with potential for subdivision (subject to council approval), or a home ready for renovation, this property holds plenty of promise. Its combination of scenic views, convenient amenities, and endless potential make it an attractive option for a wide range of buyers.

Selling as is, where is, this is a rare chance to secure your place in one of New Zealand's most desirable beachside communities.

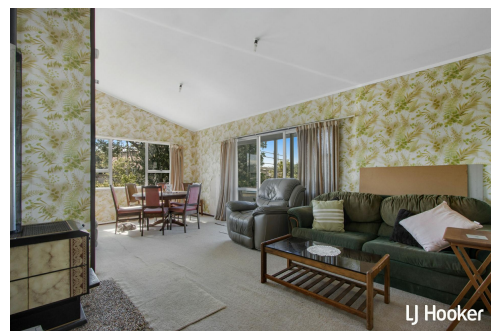
Call Sarah 0275 776665 to view or come to an open home.

More About this Property

Property ID	CGCGGE
Property Type	House
House Size	68 m2
Land Area	935 m2
Licensed Real Estate Agents (REAA2008)	

Sarah Trethewey 027 577 6665
Sales Consultant | sarah.waihibeach@ljhooker.co.nz

LJ Hooker Waihi Beach (07) 863 5801
Gary Alway Real Estate Limited
27 Wilson Road, WAIHI BEACH 3611
waihibeach.ljhooker.co.nz | waihibeach@ljhooker.co.nz



Disclaimer: All information contained therein is gathered from relevant third parties sources. We cannot guarantee or give any warranty about the information provided. Interested parties must rely solely on their own enquiries.

LJ Hooker Waihi Beach
(07) 863 5801
Gary Alway Real Estate Limited