



## Waihi Beach, 246 Seaforth Road

Ready to do a deal and move on

Architecturally designed & built in 2021 to embrace the very essence of coastal living, this stunning home at 246 Seaforth Road is a true Waihi Beach gem. With expansive views stretching out to Tuhua (Mayor) Island, you'll enjoy sunrises, sea breezes, and effortless entertaining from the open-plan living, kitchen, and dining area - all seamlessly flowing to a sun-soaked deck.

Upstairs, the home features two beautifully appointed bedrooms, including a serene master with ensuite, capturing the coastal charm and ocean views. Two further bedrooms downstairs with a second lounge & bathroom provide the perfect breakout space - ideal for guests, teenagers, or simply a peaceful retreat - with access to lush lawn, and manicured gardens.

With a total of four bedrooms and two separate living areas, there's plenty of room for the whole family or visiting friends to relax in comfort and privacy.



**Disclaimer:** All information contained therein is gathered from relevant third parties sources. We cannot guarantee or give any warranty about the information provided. Interested parties must rely solely on their own enquiries.

4

3

2

**For Sale**

Price By Negotiation

**View**

By Appointment

**Contact**

**Gary Alway AREINZ**

021 398 670

[gary.waihibeach@ljhooker.co.nz](mailto:gary.waihibeach@ljhooker.co.nz)

**LJ Hooker Waihi Beach**

**(07) 863 5801**

Gary Alway Real Estate Limited

Just a short stroll to the golden sands via Broadway Road beach access, this is more than a home - it's a beachside lifestyle designed for modern living. The property also boasts the extra with a sleep out or as is currently a home gym also offering further opportunities for home office or art studio.

Don't miss your chance to secure your slice of paradise. Contact Gary today to arrange a private viewing - or come along to the next open home and experience it for yourself.

## More About this Property

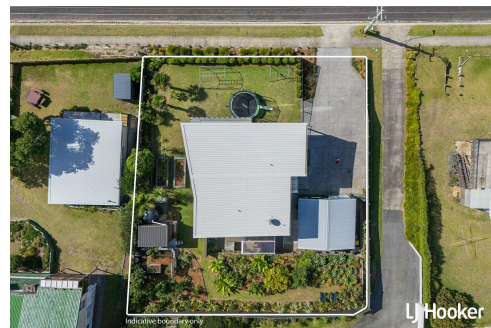
<b>Property ID</b>	CMGGGE
<b>Property Type</b>	House
<b>House Size</b>	187 m2
<b>Land Area</b>	822 m2
<b>Licensed Real Estate Agents (REAA2008)</b>	

### Gary Alway AREINZ 021 398 670

Principal, Franchise Owner, Brand Manager & Sales Consultant |  
gary.waihibeach@ljhooker.co.nz

### LJ Hooker Waihi Beach (07) 863 5801

Gary Alway Real Estate Limited  
27 Wilson Road, WAIHI BEACH 3611  
waihibeach.ljhooker.co.nz | waihibeach@ljhooker.co.nz



**Disclaimer:** All information contained therein is gathered from relevant third parties sources. We cannot guarantee or give any warranty about the information provided. Interested parties must rely solely on their own enquiries.

**LJ Hooker Waihi Beach**  
**(07) 863 5801**  
Gary Alway Real Estate Limited