



Boundary markings are approximate



Victoria Point, 7 Cartwright Street

SOLD BY NYREE EWINGS

FULLY APPROVED DUAL OCCUPANCY WITH POTENTIAL FOR SUB DIVISION

RARELY AVAILABLE OPPORTUNITY TO SECURE A BIG BLOCK WITH 2 COMPLETELY SEPARATE HOUSES – ONE LARGE 2 STOREY FAMILY HOME IN THE FRONT WITH DUAL DRIVEWAYS PLUS A LOWSET MODERN COTTAGE AT THE REAR WITH TRI STEEL SHED!

IMPRESSIVE FRONT HOUSE – 1ST DWELLING

- * Great storage underneath or dig down & convert to another level of living
- * 3 bedrooms plus 2 bathrooms
- * 2 Spacious separate living areas with striking high ceilings
- * Country style timber kitchen with stone benchtops
- * Wrap around decks off 2nd level with bay views
- * Additional upstairs entertaining area with gorgeous bay views



Disclaimer: All information contained therein is gathered from relevant third parties sources. We cannot guarantee or give any warranty about the information provided. Interested parties must rely solely on their own enquiries.

6

3

4

For Sale

BY NEGOTIATION

View

ljhooker.com.au/BRDRF2S

Contact

Nyree Ewings

0404 138 785

newings@ljhpc.com.au

Alex Mitchell

0418 540 179

amitchell.cleveland@ljh.com.au

LJ Hooker Property Centre
(07) 3286 2500

PRIVATE REAR COTTAGE – 2ND DWELLING

- * Stylish renovated kitchen opening onto timber decked entertaining
- * 3 bedrooms plus spacious living & dining
- * Polished timber floorboards throughout
- * Modernized bathroom featuring floor to ceiling tiles
- * Heritage timbers (main supporting beams) sourced from New Farm Wool Sheds
- * Outdoor shower to cool off and refresh

BOTH PROPERTIES HAVE COMPLETE PRIVACY FROM EACH OTHER AND 2 SEPARATE DRIVEWAYS FOR PARKING PLUS A DOUBLE TRI STEEL SHED (9M X 7M) WITH POWER AND LIGHTS FOR THE HOME HANDYMAN, GARAGING OR RUNNING A HOME BUSINESS – THE OPTIONS ARE ENDLESS!

ONLY A FEW METERS TO THE ABSOLUTE SANDY BEACHES & WATERFRONT VICTORIA POINT IS FAMOUS FOR, DROP THE BOAT IN AT THE BOAT RAMP & START LIVING THE RELAXED BAYSIDE LIFESTYLE YOU DESERVE

HOUSE 3D WALKTHROUGH: <https://my.matterport.com/show/?m=LctMTrQnErf>

COTTAGE 3D WALKTHROUGH: <https://my.matterport.com/show/?m=brUrTyxWiyt>

Additional Property Information:

- Vacant

More About this Property

Property ID	BRDRF2S
Property Type	House
House Size	377 m ²
Land Area	842 m ²
Including	Air Conditioning Balcony Deck Dishwasher Floorboards Built-in-Robes Solar Panels

Nyree Ewings 0404 138 785

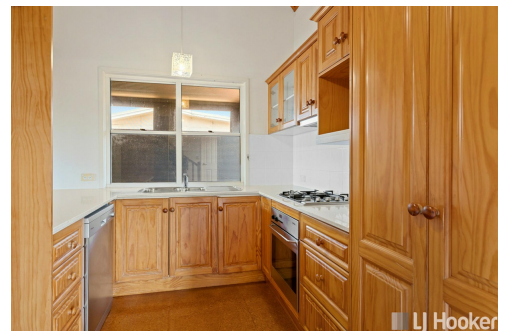
High Performance Agent - Independent Contractor - Nyree Ewings Pty Ltd
| newings@ljhpc.com.au

Alex Mitchell 0418 540 179

| amitchell.cleveland@ljh.com.au

LJ Hooker Property Centre (07) 3286 2500

152-164 Shore Street West, Raby Bay, Brisbane QLD 4163
propertycentre.ljhooker.com.au | hello@ljhpc.com.au



LJ Hooker Property Centre
(07) 3286 2500

Disclaimer: All information contained therein is gathered from relevant third parties sources.
We cannot guarantee or give any warranty about the information provided. Interested parties must rely solely on their own enquiries.

7 Cartwright Street, Victoria Point

House: 255m² Cottage: 122m² Total: 377m²

Nyree Fairings Properties

LJ Hooker Property Centre



PLEASE NOTE THIS PLAN IS FOR MARKETING PURPOSES AND IS TO BE USED AS A GUIDE ONLY. ALL MARKINGS, MEASUREMENTS, AREAS, AND LAYOUT ARE INDICATIVE ONLY AND INTERESTED PARTIES SHOULD MAKE THEIR OWN ENQUIRIES BEFORE MAKING ANY DECISIONS. FLOOR COVERINGS INDICATED ARE FOR ILLUSTRATIVE PURPOSES ONLY AND MAY NOT ACCURATELY PORTRAY ACTUAL FLOOR COVERINGS OF THE PROPERTY. NO GUARANTEES ARE MADE REGARDING THE INFORMATION CONTAINED IN THIS PLAN AND NO LIABILITY FOR ANY INACCURACIES IS ACCEPTED.

