



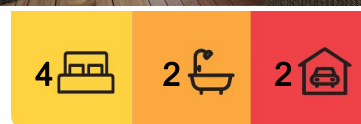
Victoria Point, 1 Bayswater Drive

Comfort, Style and Coastal Living Come Together

Welcome to 1 Bayswater Drive, Victoria Point—a stunning four-bedroom residence that combines modern luxury with a tropical ambience effortlessly. This inviting home offers a perfect blend of comfort and style, making it an ideal haven for families who appreciate contemporary finishes and a relaxed coastal feel.

Boasting four bedrooms, the main bedroom is a true retreat with its ensuite and walk-in robe, providing a private sanctuary within the home. The entire residence exudes a tropical atmosphere, enhanced by the seamless integration of stacker doors from the family and dining areas onto a timber-decked alfresco. An insulated roof covers this outside space, ensuring year-round enjoyment and entertaining possibilities.

Situated on a generous 750sqm corner block, this property offers a sense of space, the convenience of side access, and a double garage. The low-maintenance gardens add to the overall appeal, providing a tranquil outdoor setting without the hassle of extensive



For Sale
Offers Over \$1,049,000

View
ljhooker.com.au/BRBGF2S

Contact
Gemma Coady
0432 169 775
gcoady@ljhpropertycentre.com.au



Disclaimer: All information contained therein is gathered from relevant third parties sources. We cannot guarantee or give any warranty about the information provided. Interested parties must rely solely on their own enquiries.

LJ Hooker Property Centre
(07) 3286 2500

upkeep.

The heart of this home lies in its beautiful kitchen, featuring stainless steel appliances, a breakfast bar, pendant lighting, and a unique splashback. The kitchen is a central hub for cooking and socializing, making it a delightful space for culinary enthusiasts and those who love to entertain.

The bathrooms are adorned with feature tiling, complemented by monsoon shower heads and a deep soak bath in the main bathroom-creating spa-like retreats for relaxation and rejuvenation. Ducted air conditioning ensures climate control throughout the home, and bamboo flooring adds a natural elegance.

Beyond the property, a short stroll takes you to the esplanade at the end of the street, offering kilometres of scenic walking along the waterfront. This proximity to the water makes 1 Bayswater Drive an ideal choice for families who cherish a coastal lifestyle.

In summary, this residence is the perfect family home for those seeking a harmonious blend of modern living, tropical charm, and easy access to the waterfront. Don't miss the opportunity to make 1 Bayswater Drive your own-a place where comfort, style, and coastal living converge perfectly.

At A Glance:

Beautifully presented 4 bedroom lowset home with ducted aircon throughout
750sqm corner block with side access and double garage
Stroll to the esplanade at the end of the street
Stylish kitchen with stainless steel appliances
Feature tiling in bathrooms
Bamboo flooring throughout
Stacker doors onto gorgeous alfresco area
A beautiful bayside area to call home

All information contained herein is gathered from sources we consider to be reliable. However, we cannot guarantee or give any warranty about the information provided. Interested parties must solely rely on their own enquiries.

Note: This property is being sold without a price and therefore a price guide cannot be provided. The website may have filtered the property into a price bracket for website functionality purposes only.



LJ Hooker Property Centre
(07) 3286 2500

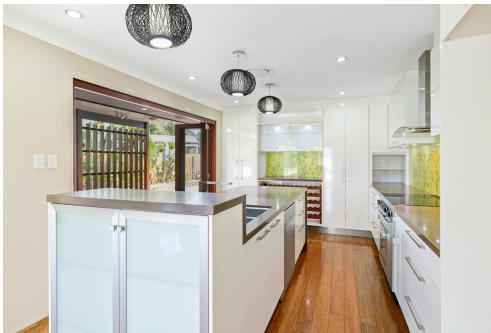
Disclaimer: All information contained therein is gathered from relevant third parties sources. We cannot guarantee or give any warranty about the information provided. Interested parties must rely solely on their own enquiries.

More About this Property

Property ID	BRBGF2S
Property Type	House
Land Area	750 m²

Gemma Coady 0432 169 775
Independent Contractor - Gemma Coady Properties Pty Ltd |
gcoady@ljhpropertycentre.com.au

LJ Hooker Property Centre (07) 3286 2500
152-164 Shore Street West, Raby Bay, Brisbane QLD 4163
propertycentre.ljhooker.com.au | hello@ljhpc.com.au



Disclaimer: All information contained therein is gathered from relevant third parties sources.
We cannot guarantee or give any warranty about the information provided. Interested parties must rely solely on their own enquiries.

LJ Hooker Property Centre
(07) 3286 2500

GEMMA COADY

PROPERTIES



1 Bayswater Drive, Victoria Point

Approx Floor Area: 217m²

PLEASE NOTE THIS PLAN IS FOR MARKETING PURPOSES AND IS TO BE USED AS A GUIDE ONLY. ALL MARKINGS, MEASUREMENTS, AREAS, AND LAYOUT ARE INDICATIVE ONLY AND INTERESTED PARTIES SHOULD MAKE THEIR OWN ENQUIRIES BEFORE MAKING ANY DECISIONS. FLOOR COVERINGS INDICATED ARE FOR ILLUSTRATIVE PURPOSES ONLY AND MAY NOT ACCURATELY PORTRAY ACTUAL FLOOR COVERINGS OF THE PROPERTY. NO GUARANTEES ARE MADE REGARDING THE INFORMATION CONTAINED IN THIS PLAN AND NO LIABILITY FOR ANY INACCURACIES IS ACCEPTED.



LJ Hooker Property Centre
(07) 3286 2500

Disclaimer: All information contained therein is gathered from relevant third parties sources. We cannot guarantee or give any warranty about the information provided. Interested parties must rely solely on their own enquiries.