



Veresdale, 33-37 Cyrus Road

Premium Location Luxury Living, Equestrian & Car Lover's Dream

Experience the perfect blend of luxury living and premium amenities with this impeccably maintained property-ideal for equestrians, car lovers, and anyone who needs ample space. Nestled on 1.67 hectares of expertly engineered and beautifully landscaped land, every inch is crafted to perfection. Whether you're looking for top-tier horse facilities, a spacious shed for your vehicles, or room for heavy machinery, this property has it all. With easy access to the Mount Lindsay Highway, commuting is a breeze. Designed for both comfort and functionality, it offers stunning views, modern living, and the ultimate in convenience.

Equestrian Facilities:

- 5 Bay Stables featuring an insulated roof, rubber flooring and industrial fans for optimum ventilation, your horses will be comfortable year-round.
- A covered wash bay area complete with a crush for vetting, pre-ride grooming, making horse prep easy and efficient.



Disclaimer: All information contained therein is gathered from relevant third parties sources. We cannot guarantee or give any warranty about the information provided. Interested parties must rely solely on their own enquiries.

4

2

5

For Sale
OFFERS OVER \$1,800,000

View
By Appointment

Contact
Jessie McClymont
0455 177 930
jmcclymont@ljhcomplete.com.au

LJ Hooker Property Complete
1300 360 388

- Six Paddocks fully fenced and equipped with shelters, all paddocks are connected by a central laneway for easy access.
- 6 Bay horse walker keeping your horses in top condition.
- A dedicated area for training, riding, and equestrian activities.
- Lighting: Strategically placed lighting makes feeding and rugging your horses at night a breeze.
- 7 Water Tanks located near the shed and stables, these tanks capture every drop, ensuring a reliable and abundant water supply. With multiple tanks in place, watering your horses and maintaining the property will always be stress-free, even during dry spells.
- In addition to the water tanks, the property also boasts a bore, further ensuring a sustainable and consistent water source for all your watering needs.
- Massive Carport perfect for trucks or gooseneck trailers, ensuring you have ample space for all your gear.
- 20x9x3 Shed with a car hoist, workbench, sink, and bar. With roller doors at both ends, it offers convenient drive-through access.
- Secure dog fencing along the property boundaries keeps your pets safe and sound.
- Strategically placed security cameras provide peace of mind, monitoring the property 24/7.
- 20 solar panels and a 5kW system, plus solar hot water, ensure energy efficiency and sustainability.
- Enjoy the bounty of your land with fruit trees scattered throughout the property.
- Sealed driveways provide easy, clean access to all areas of the property.

Luxury Home Features:

- GJ Gardener Home (Built 2011): This stunning 4-bedroom, 2-bathroom home exudes luxury with ample living space and contemporary design.
 - Open Plan Living: The spacious family room and kitchen overlook the paddocks, offering a picturesque setting for daily life.
 - Large Entertainment Area: Perfect for hosting friends and family with beautiful views of the surrounding property.
 - Study and Media Room: Extra rooms for work or relaxation, tailored to suit modern lifestyles.
 - Gourmet Kitchen: Features a gas cooker, butler's pantry, and plumbed-in fridge for ultimate convenience.
 - Ducted Air Conditioning: Stay comfortable year-round with 5-zone ducted air conditioning.
- This property truly offers the best of both worlds - a luxurious, modern home alongside state-of-the-art equestrian facilities that any horse lover would appreciate.

Make this dream property your own! Contact us today to arrange a private viewing.

Disclaimer:

Property images may have been digitally altered or staged for marketing purposes and may not constitute a complete representation of the property condition being purchased. Any photographs used by LJ Hooker may only show certain aspects of the property at the time the photographs are taken and any prospective buyer should inspect the property.



LJ Hooker Property Complete
1300 360 388

Disclaimer: All information contained therein is gathered from relevant third parties sources. We cannot guarantee or give any warranty about the information provided. Interested parties must rely solely on their own enquiries.

More About this Property

Property ID	1ZC5HGS
Property Type	House
House Size	302 m²
Land Area	1.67 hectare
Including	Ensuite Study Ducted Cooling Ducted Heating Toilets (2) Workshop Solar Panels

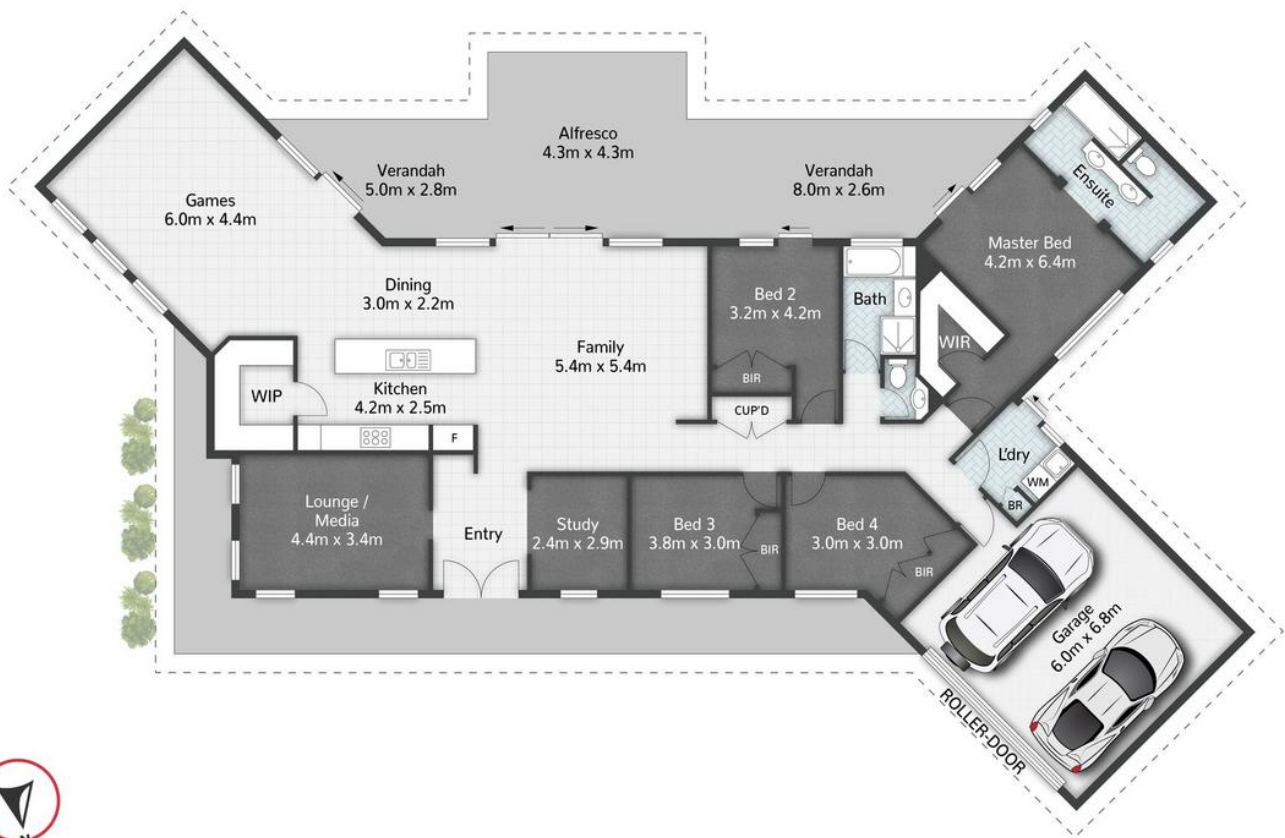
Jessie McClymont 0455 177 930
Sales Consultant | jmcclymont@ljhcomplete.com.au

LJ Hooker Property Complete 1300 360 388
Level 1, 32 Everglade Street, YARRABILBA QLD 4207
propertycomplete.ljhooker.com.au | admin@ljhcomplete.com.au



Disclaimer: All information contained therein is gathered from relevant third parties sources.
We cannot guarantee or give any warranty about the information provided. Interested parties must rely solely on their own enquiries.

LJ Hooker Property Complete
1300 360 388



33-37 Cyrus Road VERESDALE

4 | 2 | 2 | 302m²

LJ Hooker
Property Complete

All dimensions are approximate; they are subject to errors and inaccuracies and no liability will be accepted.
Plans are shown for marketing purposes only.

LJ Hooker

LJ Hooker Property Complete
1300 360 388

Disclaimer: All information contained therein is gathered from relevant third parties sources.
We cannot guarantee or give any warranty about the information provided. Interested parties must rely solely on their own enquiries.