

## Vaucluse, 2/15 Isabel Avenue

Coastal Elegance in Exclusive Isabel Avenue



Nestled in the sought-after Isabel Avenue, this stylish apartment offers a private and serene retreat with a sleek contemporary aesthetic and select modern updates. Positioned at the quiet end of the avenue, it captures the essence of coastal living-step outside to breathtaking ocean views, while nearby pathways lead to scenic cliffside walks, perfect for unwinding in your downtime.

Set within a boutique building, this residence enjoys a peaceful position away from the street, complete with a convenient keyless entry for seamless access. Designed for both comfort and style, the generous floorplan welcomes natural light from both sides, while the cleverly separated bedrooms enhance the ease of everyday living. The inviting living space is ideal for relaxation, with room to entertain guests over dinner.

The generous balcony provides ample space for outdoor dining or a BBQ setup, while the contemporary kitchen is fitted with a stainless steel gas stove and an updated dishwasher.

**For Sale**  
SOLD - PRIVATE TREATY

**View**  
[ljhooker.com.au/24XHYY](http://ljhooker.com.au/24XHYY)

**Contact**  
**Aaron Del Monte**  
0447 144 434  
[aaron.delmonte@ljhdoublebay.com](mailto:aaron.delmonte@ljhdoublebay.com)

**James Makris**  
0423714622  
[james.makris@ljhdoublebay.com](mailto:james.makris@ljhdoublebay.com)

# LJ Hooker

**LJ Hooker Double Bay**  
**(02) 9185 2816**

**Disclaimer:** All information contained therein is gathered from relevant third parties sources. We cannot guarantee or give any warranty about the information provided. Interested parties must rely solely on their own enquiries.

Stylish timber floorboards and modern lighting enhance the apartment's elegant ambiance. Both bedrooms are well-scaled and positioned on either side of the living area for added privacy, each offering mirrored built-in wardrobes. The bathroom features a bathtub and an upgraded vanity, while the internal laundry adds to the home's convenience.

Located just metres from the breathtaking Diamond Bay Cliff Walk, this apartment offers easy access to Rose Bay's cafés, bakeries, and Coles Local. Christison Park and the vibrant shopping hub of Rose Bay are also close by, while local buses provide quick connections to Bondi Junction. A variety of schools are within easy reach, and with summer around the corner, this location is perfect for enjoying nearby golf courses and stunning beaches. Approximately 5km from Bondi Junction and 8km from the CBD, this is a superb opportunity for those seeking a stylish coastal home or a smart investment in an enviable location.

## More About this Property

Property ID	24XHYY
Property Type	Apartment

### Aaron Del Monte 0447 144 434

Managing Director | [aaron.delmonte@ljhdoubling.com](mailto:aaron.delmonte@ljhdoubling.com)

### James Makris 0423714622

Property Partner | [james.makris@ljhdoubling.com](mailto:james.makris@ljhdoubling.com)

### LJ Hooker Double Bay (02) 9185 2816

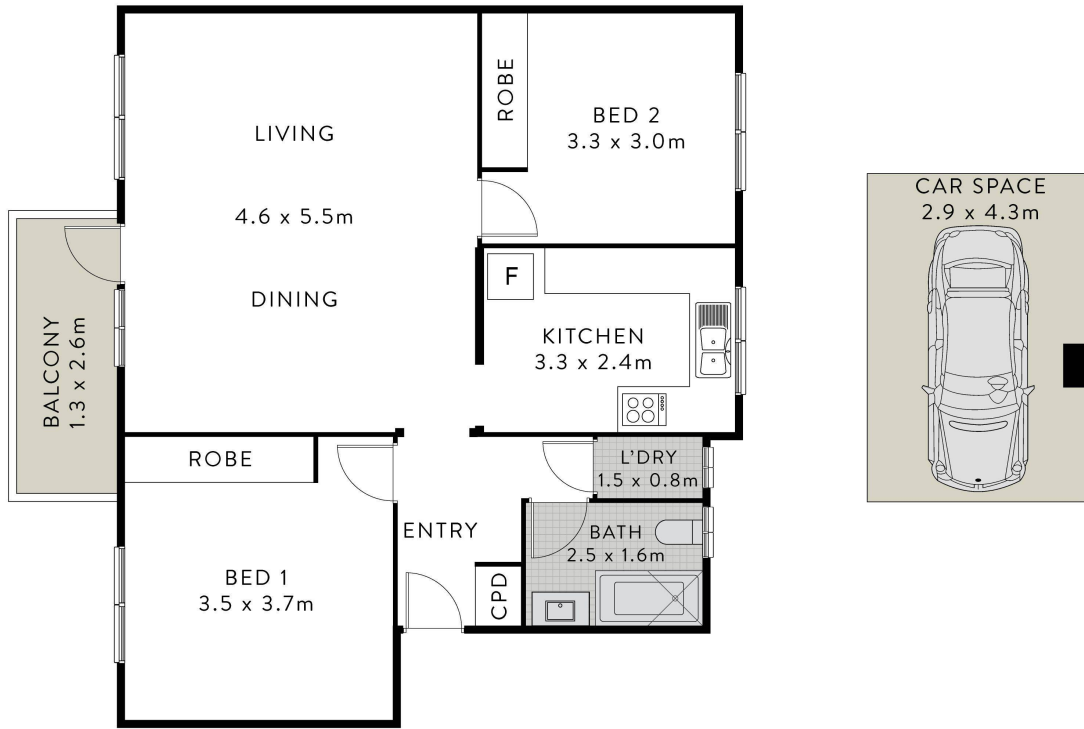
38 Ocean Street, WOOLLAHRA NSW 2025

[doublebay.ljhooker.com.au](http://doublebay.ljhooker.com.au) | [admin@ljhdoubling.com](mailto:admin@ljhdoubling.com)



**LJ Hooker Double Bay**  
**(02) 9185 2816**

**Disclaimer:** All information contained therein is gathered from relevant third parties sources. We cannot guarantee or give any warranty about the information provided. Interested parties must rely solely on their own enquiries.



LEVEL ONE

2/15 ISABEL AVENUE, VAUCLUSE

INDICATIVE ONLY ALL INFORMATION CONTAINED HEREIN IS OBTAINED FROM SOURCES WE BELIEVE TO BE ACCURATE. WE CANNOT GUARANTEE ITS ACCURACY. INTERESTED PERSONS SHOULD MAKE THEIR OWN ENQUIRIES.

