




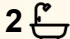

8 Cuttlefish Drive, Vasse

## Experience Spacious Family Living in Vasse

Step into contemporary living at 8 Cuttlefish Drive, Vasse, where modern comfort meets smart design. This brand new four-bedroom home offers the perfect lifestyle with quality finishing throughout. Ideal for growing families or savvy investors seeking spacious, energy-efficient living.

- 2024 Redink Home on a 450sqm block
- 4 bedrooms, 2 bathrooms including ensuite and separate WC
- Double-glazed windows, ducted air conditioning, and solar power with battery storage
- Stylish stone benchtop kitchen with walk-in pantry and island bench
- Alfresco entertaining area approx. 3x7m, plus exposed aggregate surrounds
- Double garage

Inside, discover a king-sized master bedroom boasting a walk-in robe, outdoor access to Alfresco and ducted air conditioning. Generous queen-sized secondary bedrooms include built-in robes, plush vinyl plank flooring and quality curtains. The modern kitchen features an electric oven, gas cooktop, dishwasher, scullery and stone benchtops. Two living areas provide plenty of space for family time,

4  2  2 

**FOR SALE**  
from \$1,195,000

**VIEW**  
Sat 13th Jun @ 11:00AM - 11:45AM

**AGENTS**  
Jeremy Lloyd  
0414 651 458  
jeremy.lloyd@ljhsouthwest.com.au

**AGENCY**  
LJ Hooker Property South West WA  
(08) 9791 6880

All information contained therein is gathered from relevant third parties sources.  
We cannot guarantee or give any warranty about the information provided.  
Interested parties must rely solely on their own enquiries.

 **LJ Hooker**

including a theatre room perfect for movie nights. The bathrooms combine functionality and luxury with tiled floors & heated lights. The laundry includes ample storage with laminex benchtop and under bench cabinetry. Outside, the alfresco area extends your living to the outdoors for easy entertaining, while the exposed aggregate surrounds create a low-maintenance and stylish yard with a whole home water filtration system. Positioned in the vibrant suburb of Vasse, you're a short drive from popular local parks, schools, and shopping facilities including Bunbury Farmers Market. Busselton's beautiful beaches and bustling café scene are within easy reach, along with excellent medical centres and transport routes. This location offers the perfect blend of peaceful suburban living with modern amenities just minutes away.

Whether you're searching for your forever home or an investment opportunity, don't miss your chance to view this exceptional property - call Jeremy Lloyd 0414 651 458 today!

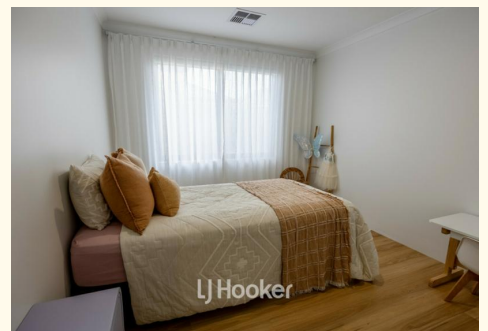
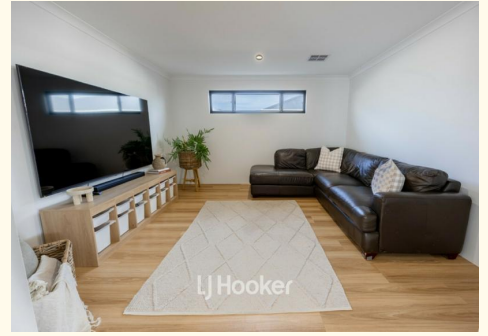
Disclaimer: Whilst every care has been taken in the preparation of this advertisement and the approximate outgoings, all information supplied by the seller and the seller's agent is provided in good faith. Prospective purchasers are encouraged to make their own enquiries to satisfy themselves on all pertinent matters. Images are for illustrative purposes.

**MORE DETAILS**

Property ID	1AEYHND
Property Type	House
Land Area	450 m2
Including	Ensuite
	Air Conditioning
	Toilets (2)
	Dishwasher
	Built-in-Robes
	Remote Garage
	Solar Panels

**Jeremy Lloyd 0414 651 458**  
 Sales Consultant ☎ Busselton | [jeremy.lloyd@ljhsouthwest.com.au](mailto:jeremy.lloyd@ljhsouthwest.com.au)

**LJ Hooker Property South West WA (08) 9791 6880**  
 130 Victoria Street, BUNBURY WA 6230  
[southwestwa.ljhooker.com.au](http://southwestwa.ljhooker.com.au) | [bunbury@ljhsouthwest.com.au](mailto:bunbury@ljhsouthwest.com.au)



## 8 Cuttlefish Drive, Vasse WA 6280



This floor plan including furniture, fixture measurements and dimensions are approximate and for illustrative purposes only. BoxBrownie.com gives no guarantee, warranty or representation as to the accuracy and layout. All enquiries must be directed to the agent, vendor or party representing this floor plan.