

Valley View, 4A Helen Terrace

Stylish, Modern and Ready For You!



Have you been searching for a modern, stylish, and low-maintenance near-new home? Originally constructed in 2020, this home's design has been carefully thought out and executed with precision. Boasting a flexible floor plan and a low-maintenance lifestyle, the only thing left to do is move in and start enjoying everything this home and its prime location have to offer!

Features to love:

- * Master bedroom with beautiful sheer curtains and walk-in robe leading to the ensuite.
- * Bedrooms 3 and 4 with built-in robes.
- * Kitchen with gas stove, ample bench space, and a walk-in pantry providing plenty of storage.
- * Open-plan living area that seamlessly connects the kitchen, dining, and family areas.
- * A second living space, perfect for a kids' play area, lounge, or large study zone.
- * Zoned ducted reverse cycle heating and cooling for year-round comfort.

For Sale
\$750,000

View
ljhooker.com.au/2BJWGJU

Contact
Ashley Palazzo
0414 347 884
ashleyp@ljhsales.com.au

Ryan Graham
0400 912 287
ryang@ljhsales.com.au



Disclaimer: All information contained therein is gathered from relevant third parties sources. We cannot guarantee or give any warranty about the information provided. Interested parties must rely solely on their own enquiries.

**LJ Hooker Greenwith | Golden Grove
| Mawson Lakes | Modbury
(08) 8289 6660**

* Freshly painted throughout.

* Undercover alfresco area overlooking the low-maintenance, secure yard.

No matter your situation, this home is sure to impress! Ideally situated on Helen Terrace, it offers unparalleled convenience, with everything you need just moments away.

Enjoy the ease of walking to local schools and the neighbouring Illberry Reserve, which features a lush lawn area and tennis courts. Plus, you're just moments from major retailers, trendy eateries at Westfield Tea Tree Plaza, Modbury Hospital, and the O-Bahn, providing a seamless commute to the Adelaide CBD.

This home is sure to tick all of the right boxes and is one you simply don't want to miss!

All information provided has been obtained from sources we believe to be accurate, however, we cannot guarantee the information is accurate and we accept no liability for any errors or omissions (including but not limited to a property's land size, floor plans and size, building age and condition). Interested parties should make their own enquiries and obtain their own legal and financial advice. Should this property be scheduled for auction, the Vendor's Statement may be inspected at either of our two LJ Hooker Property Specialists Real Estate offices for 3 consecutive business days immediately preceding the auction and at the auction for 30 minutes before it starts.

RLA 208516

More About this Property

Property ID	2BJWGJU
Property Type	House
House Size	163 m2
Land Area	348 m2
Including	Air Conditioning Ducted Cooling Ducted Heating Alarm Dishwasher Outdoor Entertaining Built-in-Robes Secure Parking Fully Fenced Remote Garage

Ashley Palazzo 0414 347 884

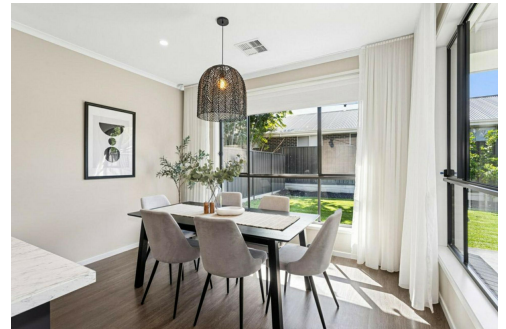
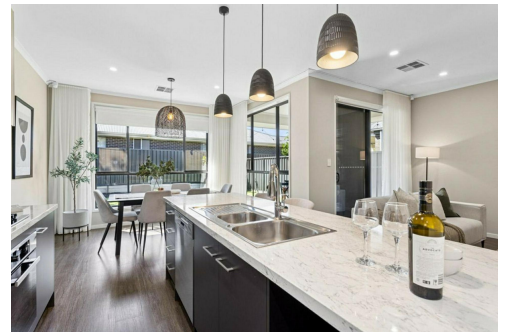
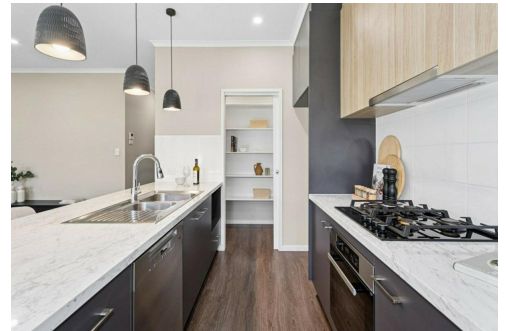
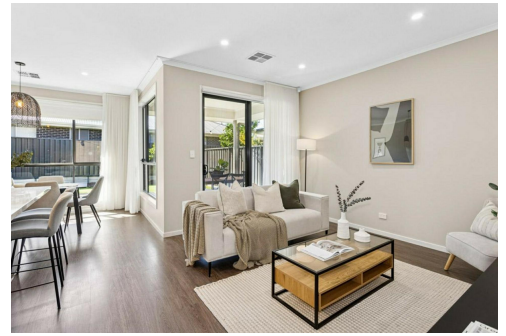
Sales Specialist | ashleyp@ljhsales.com.au

Ryan Graham 0400 912 287

Sales Specialist | ryang@ljhsales.com.au

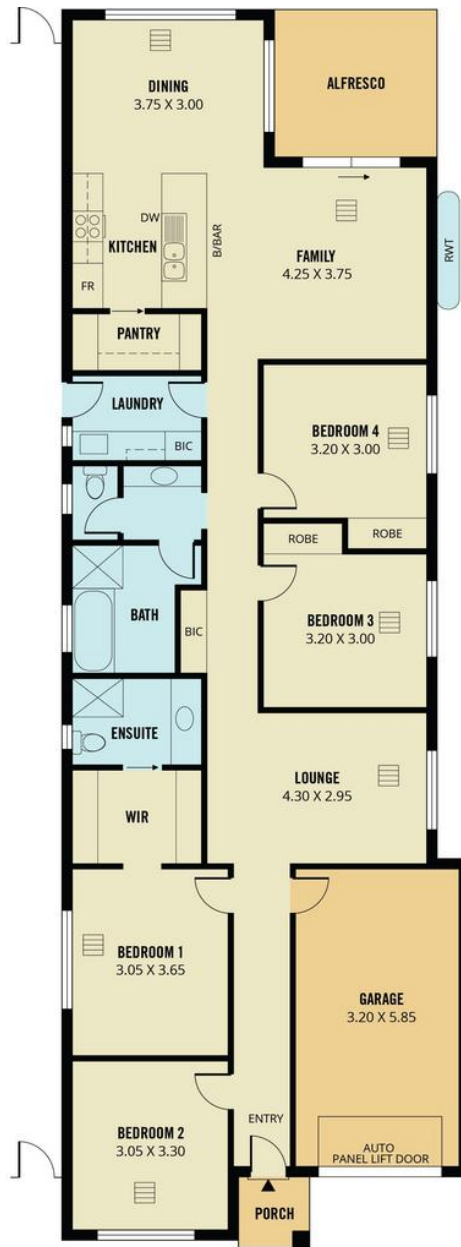
LJ Hooker Greenwith | Golden Grove | Mawson Lakes | Modbury (08) 8289 6660

North East, Shop 2, 1007 North East Road, RIDGEHAVEN SA 5097
greenwithgoldengrove.ljhooker.com.au | info@ljhsupport.com.au



Disclaimer: All information contained therein is gathered from relevant third parties sources. We cannot guarantee or give any warranty about the information provided. Interested parties must rely solely on their own enquiries.

**LJ Hooker Greenwith | Golden Grove
| Mawson Lakes | Modbury
(08) 8289 6660**



Scale in metres. This drawing is for illustration purposes only. All measurements are approximate and details intended to be relied upon should be independently verified. Produced by **The Fotobase Group**