



10 Norfolk Avenue, Valley View

Spacious Family Retreat

Auction Location: 10 Norfolk Avenue, Valley View SA 5093

Welcome to your dream home in the heart of Valley View! Lovingly maintained and thoughtfully updated, this impressive home offers the perfect blend of comfort, style and functionality which is ideal for growing families seeking extra space to unwind.

A true highlight is the expansive extension, enhancing the sense of openness and versatility throughout the home. Complete with its own cosy bedroom and a private retreat or second living area, it provides the perfect setting for relaxation, entertaining or accommodating guests. With four generous bedrooms, two featuring built-in robes there is ample room for the whole family to live comfortably.

Step inside and be instantly impressed by the fresh, modern interiors. Newly laid low-maintenance flooring flows seamlessly throughout, complemented by plush brand new carpet and a fresh coat of paint that creates a bright and welcoming atmosphere in every room. Every detail has been carefully considered, meaning all the hard work has already been done for you. Simply move in and start enjoying everything this beautiful home has to offer.

Key Features:

- Four bedrooms, including a spacious master with built-in robe and

4 1 1

FOR SALE
\$850,000

AGENTS

Donna Staines
0456 844 103
donnas@ljhsales.com.au

Michael Fenn
0405 157 840
michaelf@ljhsales.com.au

AGENCY

LJ Hooker Property Specialists
(08) 8289 6660

All information contained therein is gathered from relevant third parties sources.
We cannot guarantee or give any warranty about the information provided.
Interested parties must rely solely on their own enquiries.

LJ Hooker

- ceiling fan
- New low-maintenance flooring and plush new carpets throughout
- Gas heating in the lounge for added comfort
- Private retreat/second living area in the extension with split system
- Reverse cycle heating and cooling for year-round climate control
- Updated kitchen featuring dishwasher and Pura Tap for everyday convenience

Step outside and be welcomed by a peaceful undercover entertaining area, perfect for hosting family gatherings or simply unwinding at the end of the day. This inviting outdoor space offers year-round enjoyment while overlooking a serene natural backdrop. With no rear neighbours and an outlook onto Thomas Turner Reserve, you'll appreciate the added sense of privacy, tranquillity and connection to nature.

Conveniently located, this home places you just moments from Tea Tree Plaza Shopping Centre, offering an array of retail, dining and entertainment options at your fingertips. You'll also enjoy easy access to quality local schools, public transport, parks and everyday amenities, ensuring everything you need is within reach. Plus, with only a short drive into the Adelaide CBD, commuting is simple making this an exceptional opportunity to secure both lifestyle and location.

All information provided has been obtained from sources we believe to be accurate, however, we cannot guarantee the information is accurate and we accept no liability for any errors or omissions (including but not limited to a property's land size, floor plans and size, building age and condition). Interested parties should make their own enquiries and obtain their own legal and financial advice. Should this property be scheduled for auction, the Vendor's Statement may be inspected at our LJ Hooker Property Specialists Real Estate office for 3 consecutive business days immediately preceding the auction and at the auction for 30 minutes before it starts.

RLA 208516

MORE DETAILS

Property ID	2DBXGJU
Property Type	House
House Size	132 m2
Land Area	570 m2

Donna Staines 0456 844 103

Sales Specialist | donnas@ljhsales.com.au

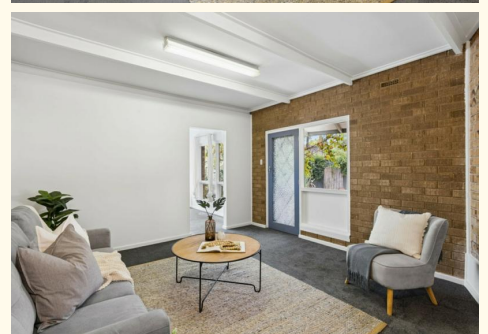
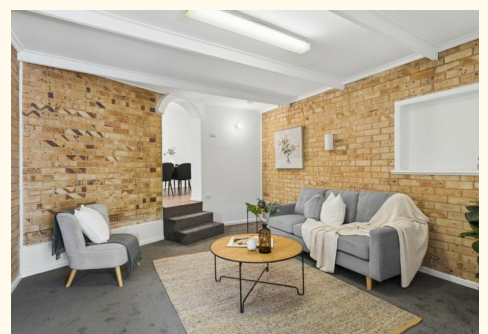
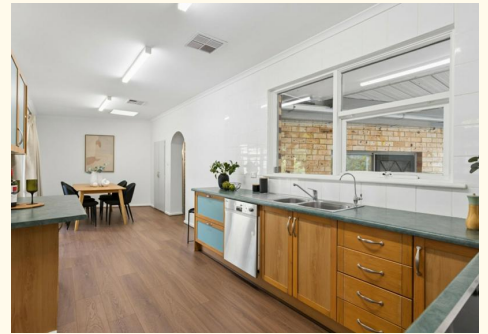
Michael Fenn 0405 157 840

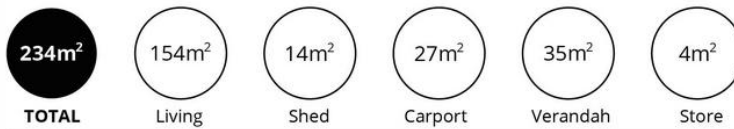
Managing Director | Auctioneer | michaelf@ljhsales.com.au

LJ Hooker Property Specialists (08) 8289 6660

Shop 2, 1007 North East Road, RIDGEHAVEN SA 5097

propertyspecialists.ljhooker.com.au | info@ljhsupport.com.au





Scale in metres. This drawing is for illustration purposes only. All measurements are approximate and details intended to be relied upon should be independently verified.

Produced by The Fotobase Group