



1/4 Windsor Close, Valentine

SINGLE LEVEL DUPLEX WITH NORTH FACING ASPECT

Positioned in a quiet cul-de-sac, this single level duplex offers low-maintenance living with the added bonus of a generous north-facing backyard, a rare find for homes of this style. Freshly updated with new paint and carpet, the property is move-in ready, leaving you free to simply relax and enjoy the lifestyle.

Conveniently located within flat walking distance to the lake's edge, local school, dog park and Valentine Bowling Club, this home perfectly balances comfort with convenience.

Features you'll love:

- Three well-proportioned bedrooms, two with built-in robes; main with air conditioning
- Freshly laid carpet in bedrooms and living spaces
- Light-filled living room with split system air conditioning
- Tiled kitchen and dining area flowing to a covered outdoor alfresco
- Original but tidy kitchen with gas cooking, ample bench space and storage
- Renovated modern bathroom with bath, frameless shower, vanity and w/c
- Expansive north-facing yard with garden shed - ideal for

All information contained therein is gathered from relevant third parties sources. We cannot guarantee or give any warranty about the information provided. Interested parties must rely solely on their own enquiries.

3 1 1

FOR SALE
CONTACT AGENT

AGENTS

Michael Velkovski
0414 332 000
michael.velkovski@ljhooker.com.au

Rebecca Velkovski
0410 524 437
rebecca.velkovski@ljhooker.com.au

AGENCY

LJ Hooker Warners Bay
(02) 4915 3800

LJ Hooker

- entertaining, pets or a veggie patch
- Large single garage with auto door
- Instantaneous, natural gas, hot water system

Whether you're downsizing, entering the market for the first time, or seeking a smart investment, this home represents an outstanding opportunity in a highly sought-after Valentine location.

The information contained herein has been provided by people we believe to be reliable, however all interested parties must rely on their own enquiries.

MORE DETAILS

Property ID	YVFHN8
Property Type	DuplexSemi-detached
Land Area	313 m2

Michael Velkovski 0414 332 000

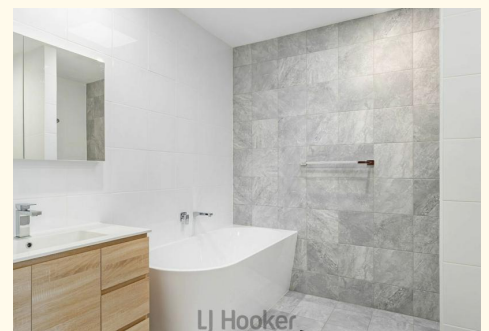
Sales Executive | michael.velkovski@ljhooker.com.au

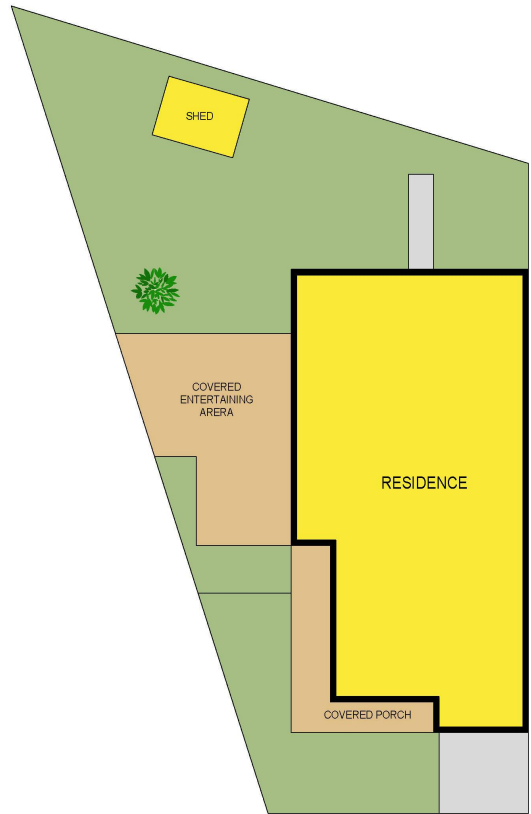
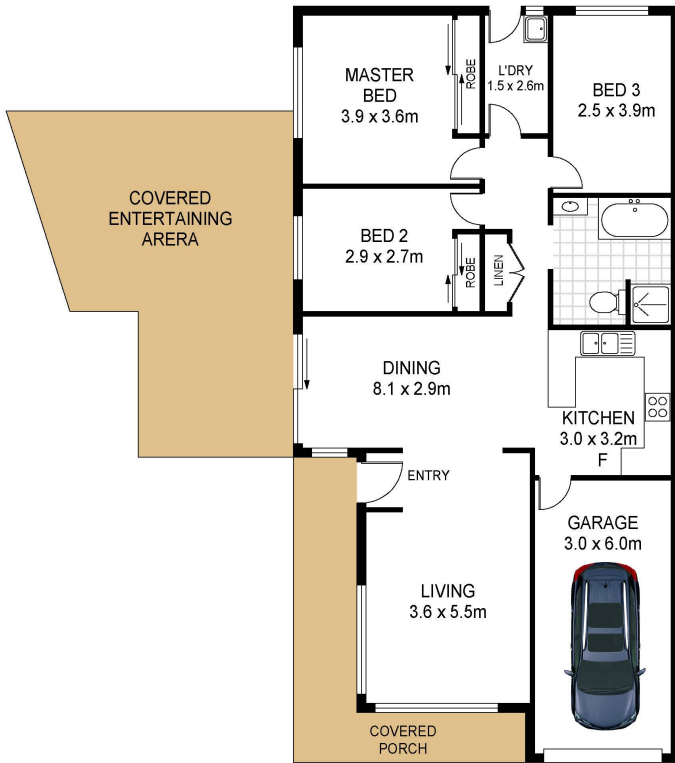
Rebecca Velkovski 0410 524 437

Sales Associate to Michael Velkovski |
rebecca.velkovski@ljhooker.com.au

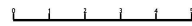
LJ Hooker Warners Bay (02) 4915 3800

Shop 12, 240-260 Hillsborough Rd, WARNERS BAY NSW 2282
warnersbay.ljhooker.com.au | warnersbay@ljhooker.com.au






LJ Hooker 1/4 Windsor Close
 Valentine



Total Internal Floor Area: 118 sqm

Scale in metres. Indicative only. Dimensions are approximate. All information contained herein is gathered from sources we believe to be reliable. However we cannot guarantee its accuracy and interested persons should rely on their own enquiries



All information contained therein is gathered from relevant third parties sources.
 We cannot guarantee or give any warranty about the information provided.
 Interested parties must rely solely on their own enquiries.