



Vale View, 300 Newman Road

A Story of Endless Possibilities

Imagine waking up to the gentle sound of birdsong and the soft rustle of leaves. The morning sun spills golden light over your 1.54 hectares of lush, flat acreage—a canvas waiting for your dreams to unfold. This is the life that awaits you in Vale View, just 15 kilometers from the bustling city center of Toowoomba.

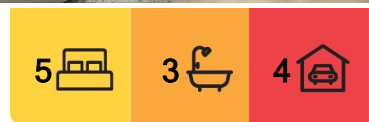
As you step outside with your coffee in hand, you survey the vast open space before you. Perhaps today you'll tend to the flourishing garden you've always dreamed of, or maybe you'll set up the perfect spot for the kids to play and explore. The thought of starting your own hobby farm excites you, knowing this property can handle it all.

Across the property, two residences stand proudly. The first is your sanctuary, a warm and inviting home where you've created countless memories. The second? A world of possibilities. It could be an income stream as a rental property, a cozy retreat for visiting family, or an enchanting Airbnb that welcomes travelers seeking a taste of country life. The choice is yours.

Water is never a concern here. With 9 rainwater tanks and a reliable high-output bore, the



Disclaimer: All information contained therein is gathered from relevant third parties sources. We cannot guarantee or give any warranty about the information provided. Interested parties must rely solely on their own enquiries.



For Sale
Offers Over \$950,000

View
ljhooker.com.au/1YNHF4W

Contact
Sally McIntyre
0427 572 751
smcintyre@ljht.com.au

LJ Hooker Toowoomba
(07) 4688 2222

land stays lush and green, even in the driest seasons. Sustainability and peace of mind are simply part of the package.

But this property offers more than just space and resources-it offers a lifestyle. Nestled in the highly sought-after Vale View community, you get the best of both worlds: the serenity of rural living and the convenience of Toowoomba's amenities. Excellent schools, vibrant shops, and everything you need are just a short drive away, yet it feels like a world apart. As the sun sets, painting the sky in shades of pink and orange, you sit back and reflect on the opportunities this property has brought into your life. Whether it's the potential to grow your family, create a thriving business, or simply enjoy the peace and beauty of rural living, this place has given you everything you need to make your dreams a reality.

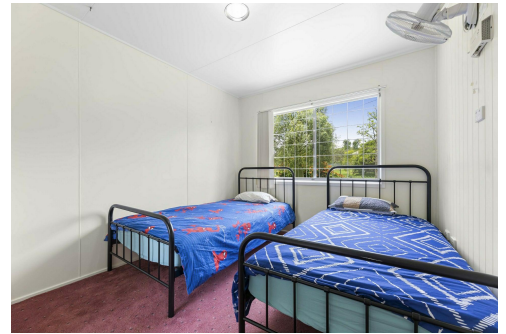
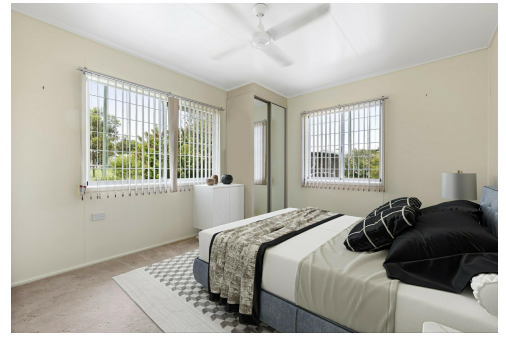
This is more than a property-it's the start of a new chapter in your life. Don't let this incredible opportunity slip away. Reach out today and begin your story in Vale View.

More About this Property

Property ID	1YNHF4W
Property Type	AcreageSemi-rural
Land Area	1.54 hectare

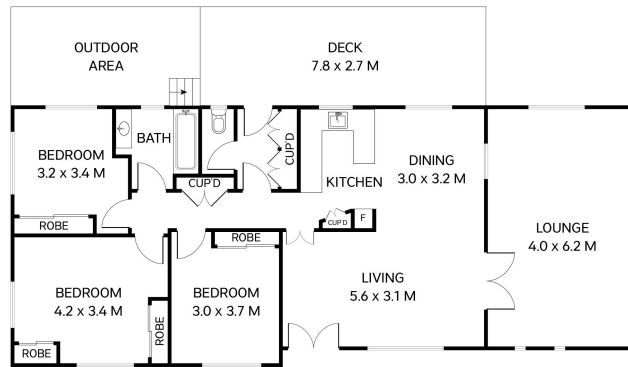
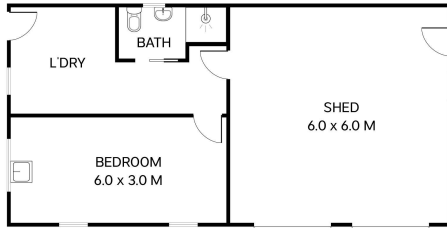
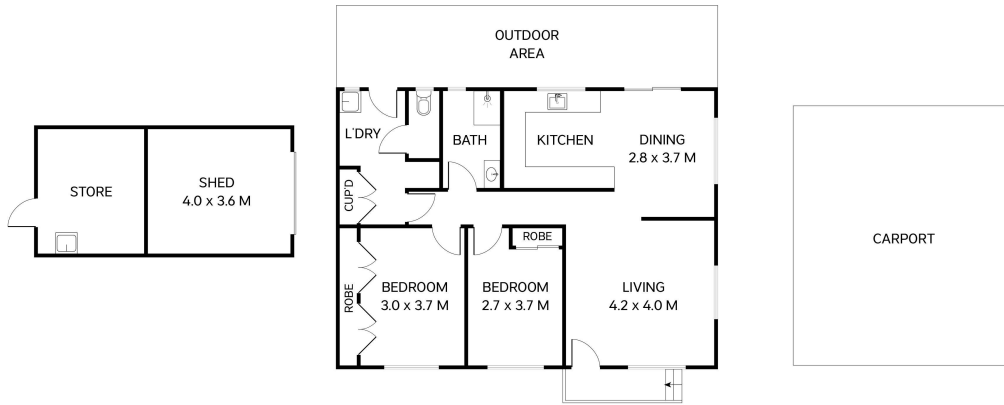
Sally McIntyre 0427 572 751
Residential Sales Executive | smcintyre@ljht.com.au

LJ Hooker Toowoomba (07) 4688 2222
Level 1, 677-683 Ruthven Street, TOOWOOMBA QLD 4350
toowoomba.ljhooker.com.au | toowoomba@ljht.com.au



LJ Hooker Toowoomba
(07) 4688 2222

Disclaimer: All information contained therein is gathered from relevant third parties sources. We cannot guarantee or give any warranty about the information provided. Interested parties must rely solely on their own enquiries.



Total: 262m²

300 Newman Road
Vale View



This plan is for representational purposes only. All dimensions are approximate and shouldn't be solely relied upon. Floorplan created by **Vue Digital**.



LJ Hooker Toowoomba
(07) 4688 2222

Disclaimer: All information contained therein is gathered from relevant third parties sources. We cannot guarantee or give any warranty about the information provided. Interested parties must rely solely on their own enquiries.