

3 Dicken Place, Usher


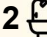
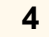
## Family-Friendly Living in Usher

Located in the heart of Usher, this charming double-storey residence offers both space and practicality in a convenient, family-friendly setting. Just minutes from the beach, schools, parks, and Bunbury's shopping precinct, the location provides the perfect balance of lifestyle and everyday convenience. Set on a generous 862m<sup>2</sup> block with established gardens, the home has been well cared for and is ready to welcome its next chapter.

Built in 1985, this residence presents a solid foundation with four bedrooms, two bathrooms, and multiple living areas, offering plenty of room for families of all sizes. With thoughtful features such as solar panels, secure parking for three cars, and well-maintained bore-reticulated gardens, the property combines comfort, affordability, and practicality in one appealing package.

Features include:

- Four well-sized bedrooms and two bathrooms
- Upstairs parents' retreat with ensuite, walk-in robe, split system, plus an additional bedroom with built-in robe
- Two downstairs bedrooms and a main bathroom with both bath and shower
- Spacious living area with split system air conditioning and gas bayonet heating in two rooms

4  2  4 

**FOR SALE**

Offers Over \$699,000

**AGENTS**

Helen Povey

0409 295 259

[helen.povey@ljhsouthwest.com.au](mailto:helen.povey@ljhsouthwest.com.au)

**AGENCY**

LJ Hooker Property South West WA

(08) 9791 6880

All information contained therein is gathered from relevant third parties sources.  
We cannot guarantee or give any warranty about the information provided.  
Interested parties must rely solely on their own enquiries.

 **LJ Hooker**

- Functional kitchen with ample storage and quality stainless steel appliances
- Ceiling fans throughout the bedrooms for year-round comfort
- Outdoor patio, perfect for entertaining, overlooking established gardens
- Bore servicing front and back gardens with full reticulation
- Solar power with 12 panels for energy efficiency
- Secure parking with two single lock-up garages plus a single lock-up carport

With its spacious layout, established gardens, and sought-after Usher location, this home is an ideal choice for families looking for space, comfort, and value. Don't miss the opportunity to make this property your own.

## MORE DETAILS

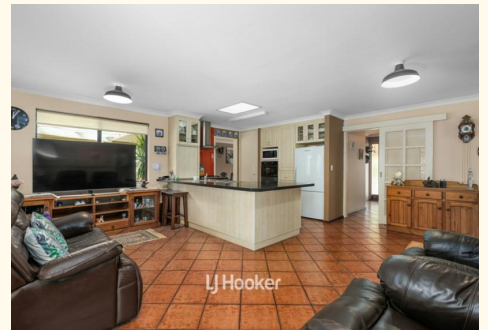
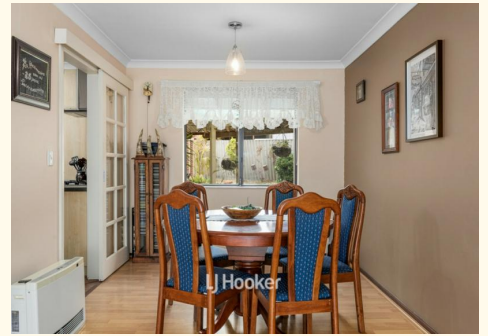
Property ID	18ZBHND
Property Type	House
Land Area	862 m2
Including	Ensuite Toilets (2)

### Helen Povey 0409 295 259

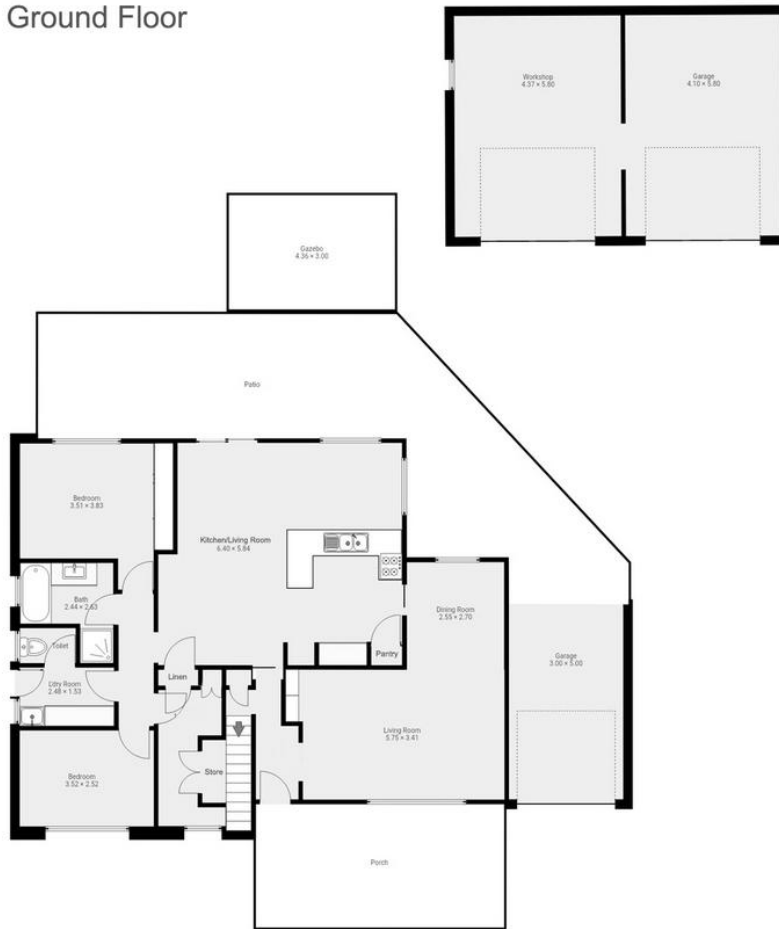
Licensed Sales Agent | MHRM â€“ Bunbury |  
helen.povey@ljhsouthwest.com.au

### LJ Hooker Property South West WA (08) 9791 6880

130 Victoria Street, BUNBURY WA 6230  
southwestwa.ljhooker.com.au | bunbury@ljhsouthwest.com.au



Ground Floor



Please note this floor plan is for marketing purposes and is to be used as a guide only. Measurements are approximate and are for illustrative purposes only