

Upper Mount Gravatt, 2107/1-5 Cremin Street

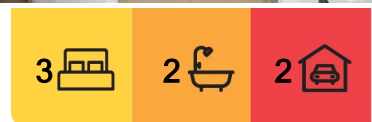
SOLD BY KEVIN AHN & SIENNA KIM

If you're looking for a first home with a little extra space but without the hassle of the extra upkeep, then this gorgeous, move-in-ready, three-bedroom unit will set your family up for fabulous fuss-free living!

- Ultra stylish and spacious layout with a study nook, open plan living, and kitchen with WIP
- Each of the three bedrooms has access to one of the two large balcony terraces
- Master with walk-in and ensuite, ceiling fans and A/C in every bedroom!
- Two secure parking spaces and lockable storage in the basement perfect for growing families
- Fantastic complex with sauna and heated pool, walking distance to Westfield Mt Gravatt
- Body Corporate Fees \$1,471 per quarter
- Rental appraisal of \$900.00 per week!



Disclaimer: All information contained therein is gathered from relevant third parties sources. We cannot guarantee or give any warranty about the information provided. Interested parties must rely solely on their own enquiries.



For Sale
Please Call

View
ljhooker.com.au/B1XCF4R

Contact
Kevin Ahn
0400 098 188
kevinahn@ljhsbh.com.au
Sienna Kim
0477 735 068
siennakim@ljhpp.com.au

LJ Hooker Property Partners
07 3344 0288

The Sky Gardens complex offers residents ultimate comfort and convenience, with a cafe on the ground floor, sauna, and heated inground pool. The secure basement parking has two spaces dedicated to your new unit, as well as a lockable space for keeping any extra belongings safely stored away. Truly set up with accessibility in mind, you will find buses, shops, parks, and everything else just metres from your doorstep!

- 130 m to Westfield Mt Gravatt with express city buses
- 350 m to Upper Mount Gravatt State School
- 500 m to Tryon St Park
- 550 m to MacGregor State High School
- 2 km to Nissan Arena
- 2.7 km to Sunnybank Plaza and Market Square
- 2.8 km to Griffith University Mount Gravatt Campus
- 3.1 km to QEII Jubilee Hospital
- 12.6 km to Brisbane CBD

As you step into this private paradise, you'll first walk past the built-in study nook - great for setting up the home office and an organised hub for your busy household.

Tiled floors and LED downlights lead you to the open plan living space, with a grand open-facing kitchen boasting a gas cooktop, dishwasher, and rows of sleek cabinetry running along the wall toward the walk-in pantry.

Large sliding doors open onto the first of the two terraces, this one with plenty of space for al fresco entertaining and barbecues under beautiful blue skies.

Also enjoying access to this first terrace is the master suite, with a partial divider that could easily be completely blocked off for total peace and privacy. This master bedroom, with its lush carpets, ceiling fan, and air-conditioning unit, flows into its walk-through wardrobe and personal ensuite - every comfort has been considered!

The other two bedrooms, also with fans, air-conditioning, and cosy carpets, each open to the separate second terrace for more fresh air and sunshine. The family bathroom services these rooms, with the same style and functionality found in the rest of the home - offering a shower-over-spa, and laundry facilities.

With every family convenience taken into consideration in this formidable and functional layout, this apartment truly tops them all. Call Team Kevin Ahn and make your move today!

All information contained herein is gathered from sources we consider to be reliable. However, we cannot guarantee or give any warranty about the information provided and interested parties must solely rely on their own enquiries.

Sunday & Summer Property Specialists Pty Ltd with Sunnybank Districts P/L T/A LJ
Hooker Property Partners
ABN 56 653 127 701 / 21 107 068 020



LJ Hooker Property Partners
07 3344 0288

Disclaimer: All information contained therein is gathered from relevant third parties sources. We cannot guarantee or give any warranty about the information provided. Interested parties must rely solely on their own enquiries.

More About this Property

Property ID	B1XCF4R
Property Type	Apartment
Land Area	164 m ²
Including	Air Conditioning Toilets (2) Intercom Balcony Dishwasher Built-in-Robes Secure Parking Remote Garage

Kevin Ahn 0400 098 188

Agent/Independent Contractor | kevinahn@ljhsbh.com.au

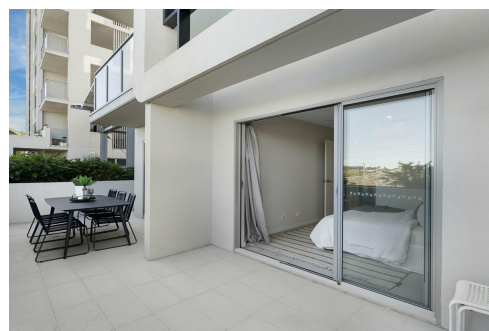
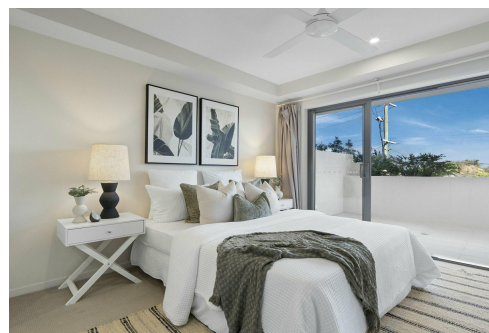
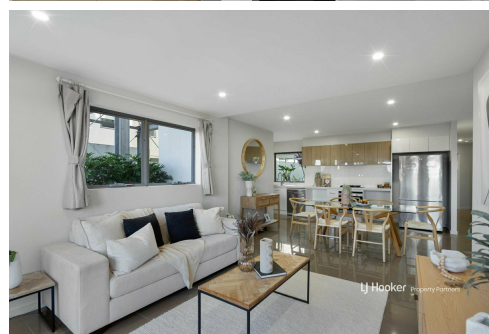
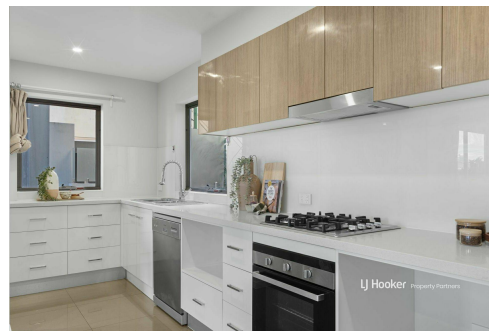
Sienna Kim 0477 735 068

Agent with Kevin Ahn | siennakim@ljhpp.com.au

LJ Hooker Property Partners 07 3344 0288

25 Pinelands Road, SUNNYBANK HILLS QLD 4109

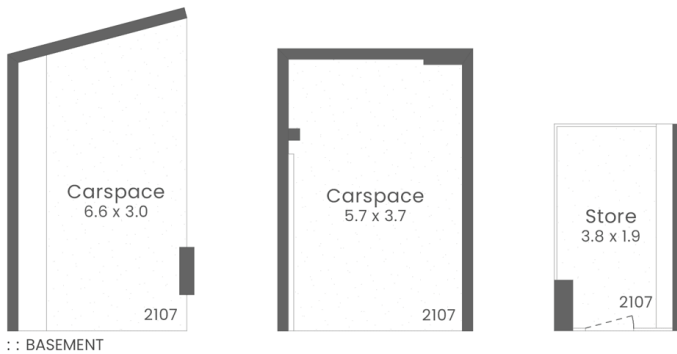
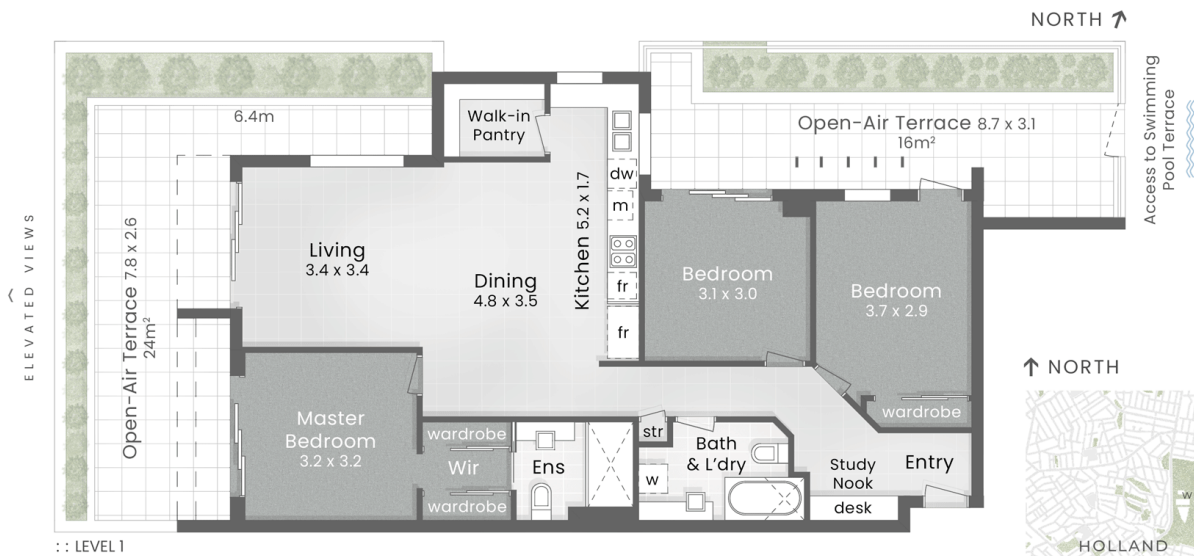
propertypartners.ljhooker.com.au | sunnybankhills@ljhpp.com.au



Disclaimer: All information contained therein is gathered from relevant third parties sources.

We cannot guarantee or give any warranty about the information provided. Interested parties must rely solely on their own enquiries.

LJ Hooker Property Partners
07 3344 0288



POINTS OF INTEREST

1. SKY GARDENS
2. Griffith University Mount Gravatt Campus
3. Griffith University Nathan Campus
4. Nissan Arena
5. QEII Jubilee Hospital
6. Sunnybank Plaza
7. Westfield Garden City
8. Mt Gravatt Plaza
9. TAFE Queensland Mount Gravatt
10. Westfield Carindale



SKY GARDENS

2107/1-5 Cremin Street UPPER MOUNT GRAVATT

3 Bed + Study Nook

2 Bath

2 Car + Store

LJ Hooker
Property Partners

Internal 100m² | Terraces & Gardens 66m² | Total 166m²
Carspaces & Store 51m²

DISCLAIMER: This is not a legal document therefore all measurements and information provided is subject to survey. No permission is given to use or alter this Floor Plan without the consent of Pure Design Concepts. The overall presentation style, layout, imagery, fonts, background, colours and terminology has been originally created by PDC and is subject to strict copyright. No ownership is taken of building design. Find out more at puredesignconcepts.com.au

pdc.

LJ Hooker

LJ Hooker Property Partners
07 3344 0288

Disclaimer: All information contained therein is gathered from relevant third parties sources. We cannot guarantee or give any warranty about the information provided. Interested parties must rely solely on their own enquiries.