


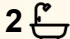

308 Canvey Road, Upper Kedron

Former Flagship Display Home with Every Luxury Upgrade Imaginable

An exceptional residence of style, sophistication and award-calibre design, this breathtaking lowset home delivers a lifestyle of luxury in one of Upper Kedron's most desirable family settings.

Originally constructed as a flagship display home and recognised as a HIA Awards Finalist, the residence showcases an extraordinary level of craftsmanship, premium inclusions and thoughtful architectural design throughout. Beautifully positioned behind a striking facade, the home immediately impresses with its commanding street presence before opening to reveal an inviting family sanctuary of remarkable quality and scale.

A grand oversized front door and gallery-style entrance hall create a stunning first impression, while soaring 2.7 metre ceilings and an incredible cathedral ceiling above the kitchen, dining and family room enhance the sense of light, openness and sophistication. The elevated north-facing aspect and abundance of windows allow natural light and breezes to effortlessly filter throughout the home.

4  2  2 

FOR SALE

For Sale Now

VIEW

By Appointment

AGENTS

Daniel Waters

0412 847 849

dwaters@ljhooker.com.au

AGENCY

LJ Hooker Aspley | Chermiside

(07) 3263 6022

All information contained therein is gathered from relevant third parties sources.
We cannot guarantee or give any warranty about the information provided.
Interested parties must rely solely on their own enquiries.

 **LJ Hooker**

At the heart of the residence lies a truly spectacular designer kitchen that has been crafted to impress both entertainers and everyday family living alike. Finished with luxurious Silestone bench tops, soft-close cabinetry, extensive storage and an oversized island bench with undermount double sink, the space is complemented by premium Bosch appliances including a 900mm oven, 5 burner gas cooktop and integrated dishwasher. It is a kitchen with undeniable wow factor.

The flowing open-plan design creates seamless connectivity between the kitchen, dining, family living spaces and outdoor entertaining area, ensuring the home functions beautifully for both relaxed family living and large-scale entertaining. The spacious family and dining room is enhanced by elegant VJ wall panelling and custom built-in cabinetry, while a separate media room provides valuable additional living space and separation for busy households.

Accommodation comprises four generous bedrooms, including a luxurious master retreat complete with walk-in robe and a beautifully appointed ensuite featuring dual vanities, shower and toilet. The family bathroom is equally impressive with floor-to-ceiling tiling, a frameless glass shower, bath, vanity and separate toilet.

Perfectly suited to modern lifestyles, the home also features a dedicated study space with dual workstations - ideal for working from home or children's homework and study needs.

Outside, the covered alfresco entertaining area with built-in BeefEater BBQ overlooks the level lawn and captures peaceful leafy suburban views, creating the perfect setting for weekend gatherings or quiet afternoons with family and friends.

Things You Will Love:

- HIA Awards Finalist and former flagship display home
- Luxurious single level design with premium upgrades throughout
- Striking facade and gallery-style entrance hall with oversized front door
- Soaring 2.7 metre ceilings plus stunning cathedral ceiling over the main living zone
- Elevated north-facing aspect capturing beautiful natural light and breezes
- Dream designer kitchen with Silestone bench tops and premium Bosch appliances
- Incredible indoor-outdoor flow between kitchen, living, alfresco and backyard
- Spacious family/dining area with elegant VJ wall panelling and built-in cabinetry
- Separate media room providing additional living space and separation
- Four generous bedrooms including a luxurious master suite with walk-in robe and ensuite
- Dedicated study space with dual workstations for working from home or study needs
- Covered alfresco entertaining area with built-in BeefEater BBQ
- Level lawn and leafy suburban outlooks
- Engineered timber flooring and quality carpets throughout
- Daikin ducted air-conditioning system
- Solar system with Tesla battery
- Quality blinds, sheer curtains and security alarm system
- Double lock-up garage
- Steel frame construction
- Convenient Upper Kedron location close to schools, shops, supermarkets and parklands

Positioned within minutes of quality schools, supermarkets, shopping precincts, parklands and everyday amenities, this extraordinary residence offers an enviable family lifestyle in a premium Upper Kedron location.

A truly special home where luxury, functionality and timeless design come together in spectacular fashion. For further information or to arrange your inspection, please contact Daniel Waters.

DISCLAIMER: All information provided has been obtained from sources we believe to be accurate. However, we cannot guarantee the information is accurate and accept no liability for errors or omissions. (including but not limited to a property's land size, floor plans and size, building age and condition) Interested parties should make their own enquiries and obtain their own legal advice.

DISCLAIMER: All information provided has been obtained from sources we believe to be accurate. However, we cannot guarantee the information is accurate and accept no liability for errors or omissions. (including but not limited to a property's land size, floor plans and size, building age and condition) Interested parties should make their own enquiries and obtain their own legal advice.

MORE DETAILS

Property ID	3CDCF1R
Property Type	House
Land Area	448 m2
Including	Ensuite Study Air Conditioning Ducted Cooling Ducted Heating Toilets (2) Alarm Balcony Dishwasher Floorboards Built-in-Robes Secure Parking Fully Fenced Remote Garage Solar Panels Liveability

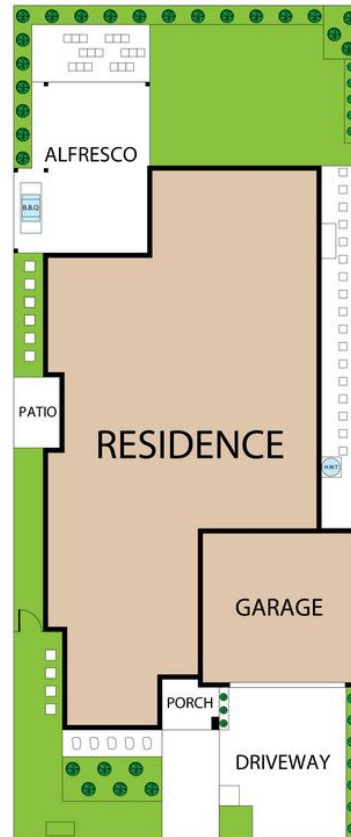
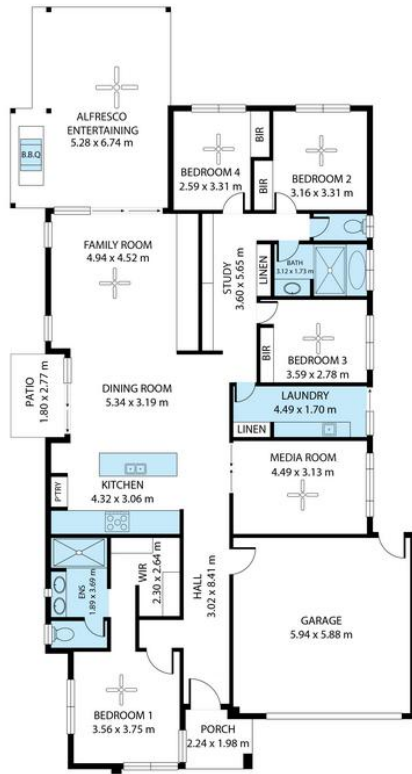
Daniel Waters 0412 847 849

Business Owner, Sales Consultant and Registered Valuer |
dwaters@ljhooker.com.au

LJ Hooker Aspley | Chermside (07) 3263 6022

1359 Gympie Road, ASPLEY QLD 4034
aspley.ljhooker.com.au | aspley@ljhooker.com.au





308 Canvey Road, Upper Kedron QLD 4055, Australia

Whilst every attempt has been made to ensure the accuracy of the floor plan contained here, measurements of doors, windows, rooms and any other items are approximate and no responsibility is taken for any error, omission, or misstatement. This plan is for illustrative purposes only and should be used as such by any prospective purchaser.

All information contained therein is gathered from relevant third parties sources. We cannot guarantee or give any warranty about the information provided. Interested parties must rely solely on their own enquiries.