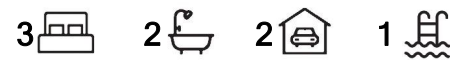




Upper Coomera, 70/24 Jessica Drive

Spacious Townhouse in Prime Location - Resort-Style Living in Upper Coomera



For Sale
\$725,000

View
By Appointment

Contact
Robbie Dunn
0404 466 793
rdunn@ljhgc.com.au

Jaimie Williams
0437 397 795
jwilliams@ljhgc.com.au

Positioned in the highly sought-after Ellington complex, this modern, low-maintenance townhouse offers exceptional value for homeowners and investors alike. Centrally located close to schools, shops, public transport and the M1, this property combines lifestyle, convenience, and capital growth potential in one attractive package.

Bright and airy throughout, with quality finishes and modern inclusions, this is an ideal home or set-and-forget investment in one of South East Queensland's fastest-growing areas.

Vacant, cleaned and ready for a new owner!

Property Features:

* 3 spacious double bedrooms with ceiling fans

LJ Hooker

Disclaimer: All information contained therein is gathered from relevant third parties sources. We cannot guarantee or give any warranty about the information provided. Interested parties must rely solely on their own enquiries.

LJ Hooker Coomera
(07) 5585 7888

- * Master bedroom with ensuite
- * Main bathroom with full-size bathtub
- * Open-plan lounge and dining area with air conditioning
- * Stylish kitchen with granite benchtops and stainless-steel appliances
- * Gas cooktop, dishwasher & ample cupboard space
- * Natural gas hot water
- * Covered outdoor area
- * Fenced rear yard
- * Single lock-up garage plus additional car space - No moving one car to get to the other
- * Body Corp approximately \$96 a week
- * Compliant Smoke Alarm Compliance Certificate
- * Rental appraisal - \$700 - \$730 a week

Complex Features:

- * Secure gated entry with video surveillance
- * Resort-style facilities: lap pool, spa, gym, sauna & BBQ area
- * Communal kitchen, lounge and dining areas
- * On-site management for peace of mind
- * Plenty of visitor parking

Location Perks:

- * Meters to public transport
- * Walking distance to private and public schools, child care, cafes, and shops and the new Woolworths currently under construction
- * Just 4 mins to Westfield Coomera & Coomera train station 3 mins to M1 Exit 54
- * Less than 40 mins to Brisbane City and 30 mins to Surfers Paradise
- * Easy access to both Brisbane International Airport and Coolangatta Airport

Disclaimer: Whilst every effort has been made to ensure the accuracy of these particulars, no warranty is given by the owner or the agent as to their accuracy. Interested parties should not rely on these particulars as representations of fact but must instead satisfy themselves by inspection or otherwise.

More About this Property

Property ID	43BZGTJ
Property Type	Unit
House Size	155 m2
Including	Ensuite Air Conditioning Pool Courtyard Balcony Gym Dishwasher Outdoor Entertaining Floorboards Built-in-Robes Secure Parking Fully Fenced Remote Garage

Robbie Dunn 0404 466 793

Sales Specialist | L.R.E.A | rdunn@ljhgc.com.au

Jaimie Williams 0437 397 795

| jwilliams@ljhgc.com.au

LJ Hooker Coomera (07) 5585 7888

The Hub, 5/90 Days Road, UPPER COOMERA QLD 4209
coomera.ljhooker.com.au | coomera@ljhgc.com.au



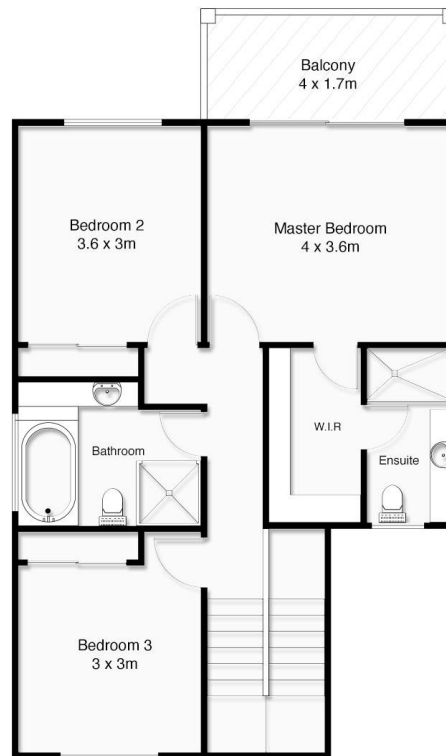
LJ Hooker

Disclaimer: All information contained therein is gathered from relevant third parties sources. We cannot guarantee or give any warranty about the information provided. Interested parties must rely solely on their own enquiries.

LJ Hooker Coomera
(07) 5585 7888



Ground floor



First floor



Coomera Ormeau Tamborine Mountain

70/24 Jessica Drive, Upper Coomera

Whilst every attempt has been made to ensure the accuracy of the floor plan contained here, measurements of doors, windows, rooms and any other items are approximate and no responsibility is taken for error, omission or misstatement. This plan is for illustrative purposes only and should only be used as such by any prospective purchaser.

Total approximate floor area: 155m²

