



8 Taryn Court, Upper Coomera

IMPRESSIVE DOUBLE-STOREY WITH LARGE SIDE ACCESS

Tucked away at the end of a peaceful cul-de-sac in one of Upper Coomera's most family-friendly pockets, 8 Taryn Court delivers the space, functionality and lifestyle that growing families are searching for. Spread across two well-designed levels, this substantial home offers generous living zones, quality inclusions and a rare large side access, a standout feature that sets this property apart from the rest.

Downstairs, the home opens to a functional open-plan kitchen and dining area, complemented by two separate living zones that provide flexibility for every stage of family life. The kitchen is equipped with an electric cooktop and dishwasher, while a convenient powder room and separate toilet on the lower level add practicality for busy households. Sliding doors lead out to a large, fully fenced backyard, offering ample room for kids, pets, and weekend entertaining.

Upstairs, the master suite is a true retreat, featuring a walk-in robe, private ensuite and its own balcony, the perfect spot to unwind at the end of the day. Three additional bedrooms are well-sized and serviced by the main bathroom, ensuring comfort for the whole family.

Key Features:

- Double-storey family home positioned in a quiet, family-friendly

4  2  2 

FOR SALE
Contact Agent

VIEW

Sat 13th Jun @ 12:15PM - 12:45PM

AGENTS

David Brown
0432 010 020
david.brown@ljhooker.com.au

Justin Faber
0466 280 479
justin.faber@ljhooker.com.au

AGENCY

LJ Hooker Oxenford
(07) 5632 8428

All information contained therein is gathered from relevant third parties sources.
We cannot guarantee or give any warranty about the information provided.
Interested parties must rely solely on their own enquiries.

 **LJ Hooker**

- cul-de-sac
- Rare large side access, ideal for a boat, trailer, caravan or additional storage
- Spacious master bedroom with walk-in robe, private ensuite and private balcony
- Air conditioning to the master bedroom and main dining/living area
- Ceiling fans throughout all bedrooms for year-round comfort
- Two separate living areas offering excellent flexibility
- Open-plan kitchen and dining with electric cooktop and dishwasher
- Powder room and separate toilet conveniently located downstairs
- Large, fully fenced backyard with room for play equipment, pets and more
- Generous side access suitable for a boat, trailer or additional vehicle

Location & Lifestyle:

- Situated in a quiet cul-de-sac with minimal through traffic, ideal for families
- Close to Upper Coomera State College and local primary schools
- Short drive to Coomera Town Centre, Westfield Coomera and local shops
- Easy access to the M1 motorway for commuting to Brisbane or the Gold Coast
- Near public transport, medical facilities and recreational parks
- Approx. 30 minutes to the Gold Coast beaches
- Approx. 45 minutes to Brisbane CBD (off-peak)

Properties offering this combination of space, side access and cul-de-sac positioning in Upper Coomera are tightly held, this one won't last long.

Disclaimer:

We have in preparing this information used our best endeavours to ensure that the information contained herein is true and accurate, but accept no responsibility and disclaim all liability in respect of any errors, omissions, inaccuracies or misstatements that may occur. Prospective purchasers should make their own enquiries to verify the information contained herein.

MORE DETAILS

Property ID	SWJ0C
Property Type	House
Land Area	600 m2

David Brown 0432 010 020

Principal | LREA | david.brown@ljhooker.com.au

Justin Faber 0466 280 479

Sales Associate to David Brown | justin.faber@ljhooker.com.au

LJ Hooker Oxenford (07) 5632 8428

13/5 Michigan Drive, OXFENFORD QLD 4210

oxenford.ljhooker.com.au | oxenford@ljhooker.com.au





David Brown
0432 010 020

8 Taryn Court,
Upper Coomera

Property Totals

- Internal: 197 m2::
- External: 22 m2 ::
- Approx Total: 219 m2 ::

- BED 4
- BATH 2.5
- CAR 2

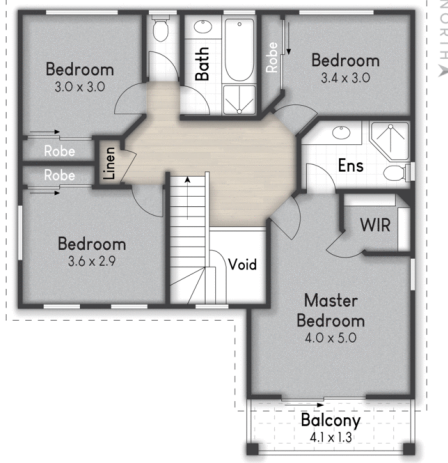
Whilst every attempt has been made to ensure the accuracy of the floorplan contained here, measurements of doors, windows, rooms and any other item are approximate and no responsibility is taken for any error, omission, or misstatement. This plan is for illustrative purposes only and should only be used as such by any prospective purchaser



LOWER LEVEL ::



UPPER LEVEL ::



All information contained therein is gathered from relevant third parties sources.
We cannot guarantee or give any warranty about the information provided.
Interested parties must rely solely on their own enquiries.

