



Upper Coomera, 8 Glasswing Drive

A Grand Family Home with Endless Possibilities! - Large 615m2 Corner Block, High ceilings, 4 Large bedrooms

Welcome to 8 Glasswing Drive - A Grand Family Home with Endless Possibilities!

Prepare to be amazed by this spacious 4-bedroom, 2-bathroom residence, where high ceilings and generous dimensions create an atmosphere of elegance and comfort. Nestled on one of the largest and most impressive yards you'll find in the area, this property is a true blank canvas, waiting for its forever owner to bring their vision to life.

As you enter, you'll immediately be struck by the sense of space, enhanced by the soaring ceilings that elevate the entire living experience. The master bedroom is thoughtfully positioned away from the other three bedrooms, offering a serene retreat where you can unwind in peace. Complete with a private ensuite and a generous walk-in robe, this master suite is designed for ultimate comfort and privacy.



For Sale
Register Your Interest

View
ljhooker.com.au/4305GTJ

Contact
Nykisha Brown
0435 990 266
nbrown@ljhgc.com.au
Dawie Olivier
0447 822 879
dolivier@ljhgc.com.au

LJ Hooker

Disclaimer: All information contained therein is gathered from relevant third parties sources. We cannot guarantee or give any warranty about the information provided. Interested parties must rely solely on their own enquiries.

LJ Hooker Coomera
(07) 5585 7888

Each of the additional bedrooms is exceptionally large, providing ample space for family members or guests to relax and recharge. With room to spare, these bedrooms can easily accommodate study areas, play spaces, or whatever your family needs.

The heart of the home features a tiled open-plan kitchen, dining, and family room that seamlessly flows into the outdoor entertainment area. This space is perfect for hosting gatherings or simply enjoying quality time with loved ones. The separate carpeted lounge or media room adds versatility, offering a cozy retreat for movie nights or quiet evenings.

Step outside into one of the biggest and most spacious yards you've seen, an expansive outdoor area that invites creativity and play. Whether you envision a lush garden, a play area for the kids, or an entertainer's paradise with a stunning outdoor kitchen or pool, the possibilities are endless.

This home truly needs to be inspected to appreciate its grandness and potential fully. Conveniently located near local primary and secondary schools, shops, parks, and public transport, it offers the perfect blend of tranquillity and accessibility.

Key Features:

4 spacious bedrooms

Master bedroom with ensuite and walk-in robe, thoughtfully positioned away from other bedrooms

High ceilings enhancing the sense of space

Tiled open-plan kitchen, dining, and family room

Separate carpeted lounge/media room

Large main bathroom with separate toilet

Expansive outdoor covered entertainment area

One of the largest yards in the area - a blank canvas for your creativity

Ceiling fans and split system air conditioning for year-round comfort

Double lockup garage for secure parking

Close proximity to local primary and secondary schools (public and private)

Convenient access to shops, medical facilities, parks, public transport, and the M1

615m² Corner Block of land

Vacant and ready for its new owners, just in time for Christmas.

Don't miss your chance to make this remarkable property your own. Schedule a viewing today and discover the endless opportunities that await at 8 Glasswing Drive!

More About this Property

Property ID	4305GTJ
Property Type	House
Land Area	615 m ²
Including	Dishwasher Outdoor Entertaining Built-in-Robes Remote Garage

Nykisha Brown 0435 990 266

Sales Specialist | nbrown@ljhgc.com.au

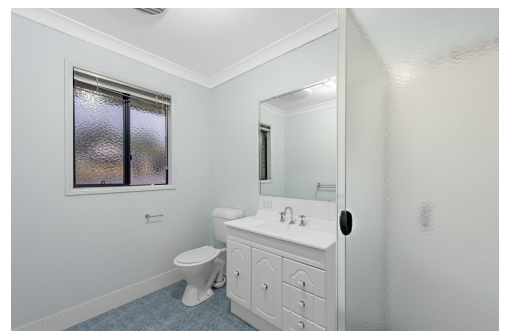
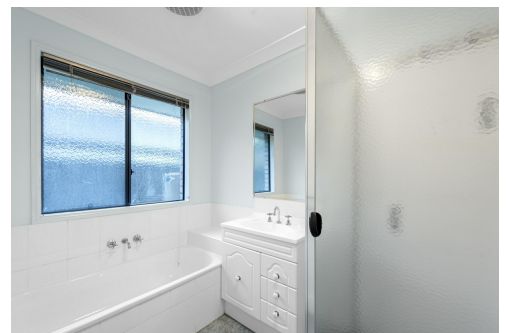
Dawie Olivier 0447 822 879

Sales Specialist | dolivier@ljhgc.com.au

LJ Hooker Coomera (07) 5585 7888

The Hub, 5/90 Days Road, UPPER COOMERA QLD 4209

coomera.ljhooker.com.au | coomera@ljhgc.com.au



LJ Hooker

Disclaimer: All information contained therein is gathered from relevant third parties sources.

We cannot guarantee or give any warranty about the information provided. Interested parties must rely solely on their own enquiries.

LJ Hooker Coomera
(07) 5585 7888



Total approximate floor area: 225m²

LJ Hooker
Solutions Gold Coast

8 Glasswing Drive, Upper Coomera

While every attempt has been made to ensure the accuracy of the floor plan contained here, measurements of doors, windows, rooms and any other items are approximate and no responsibility is taken for error, omission or misstatement. This plan is for illustrative purposes only and should only be used as such by any prospective purchaser.



LJ Hooker

LJ Hooker Coomera
(07) 5585 7888

Disclaimer: All information contained therein is gathered from relevant third parties sources.
We cannot guarantee or give any warranty about the information provided. Interested parties must rely solely on their own enquiries.