

## Upper Coomera, 50 Bushgum Crescent

### JUMP IN QUICK!!!

Welcome to 50 Bushgum Crescent, Upper Coomera! This beautifully renovated, north-facing single-story family home is perfectly positioned on a generous 784m<sup>2</sup> block in the highly desirable Upper Coomera neighborhood. Offering a spacious layout, the home features four well-sized bedrooms and two modern bathrooms.

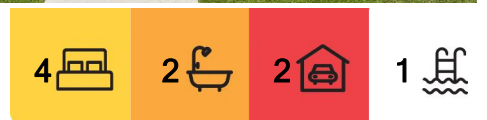
Upon entering this low-maintenance home, you'll instantly appreciate the inviting atmosphere and thoughtful design. The open plan living areas flow seamlessly, with a stunning kitchen at the heart of the home, offering a beautiful view of the outdoor entertaining area and pool.

#### Key Features:

- Master Bedroom with Ensuite
- Three additional Bedrooms, all with built-in robes and fans



**Disclaimer:** All information contained therein is gathered from relevant third parties sources. We cannot guarantee or give any warranty about the information provided. Interested parties must rely solely on their own enquiries.



**For Sale**  
Contact Agent

**View**  
[ljhooker.com.au/BKJ0C](http://ljhooker.com.au/BKJ0C)

**Contact**  
**David Brown**  
0432 010 020  
david.brown@ljhooker.com.au

**Lucas Rupp**  
0406 249 324  
lucas.rupp@ljhooker.com.au

**LJ Hooker Oxenford**  
**(07) 5632 8428**

- Renovated bathrooms
- 2 Large living areas
- Split System Airconditioning
- Ceiling fans
- Large entertaining area overlooking the spacious pool
- Double garage with Shade sails
- 784M2

Conveniently located, this home is just a short drive from Brisbane and Surfers Paradise, as well as Westfield Town Centre, Costco, and Coomera's exciting theme parks!

Situated in a family-friendly community on the northern Gold Coast, you'll enjoy easy access to everyday essentials, including Coles, Woolworths, cafes, and fast food outlets. The home is within the catchment area for several sought-after schools and is also close to private school options. Nearby parks, playgrounds, and walking paths provide plenty of outdoor recreation, while easy access to the highway and Coomera Train Station ensures stress-free commuting.

Just 10 minutes away, you'll find the Gold Coast's iconic amusement parks, including Movie World, Wet'n'Wild, Topgolf, and Dreamworld. With bus routes nearby, and only a short drive to Surfers Paradise and 45 minutes from Brisbane and Coolangatta, the location offers both convenience and connectivity.

Disclaimer:

We have in preparing this information used our best endeavours to ensure that the information contained herein is true and accurate, but accept no responsibility and disclaim all liability in respect of any errors, omissions, inaccuracies or misstatements that may occur. Prospective purchasers should make their own enquiries to verify the information contained herein.

## More About this Property

|                      |        |
|----------------------|--------|
| <b>Property ID</b>   | BKJ0C  |
| <b>Property Type</b> | House  |
| <b>Land Area</b>     | 784 m2 |
| <b>Including</b>     | Pool   |

**David Brown 0432 010 020**

Principal | LREA | david.brown@ljhooker.com.au

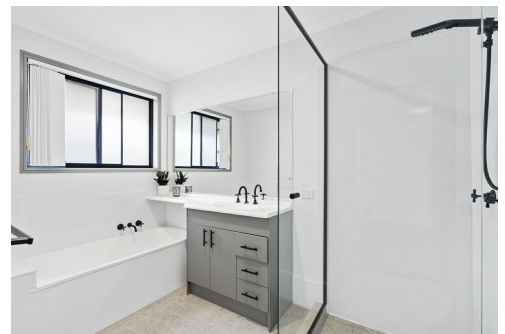
**Lucas Rupp 0406 249 324**

Sales Associate to David Brown | lucas.rupp@ljhooker.com.au

**LJ Hooker Oxenford (07) 5632 8428**

13/5 Michigan Drive, OXFENFORD QLD 4210

oxenford.ljhooker.com.au | oxenford@ljhooker.com.au



**LJ Hooker Oxenford**  
**(07) 5632 8428**

**Disclaimer:** All information contained therein is gathered from relevant third parties sources. We cannot guarantee or give any warranty about the information provided. Interested parties must rely solely on their own enquiries.



50 Bushgum Crescent, Upper Coomera

BED 4 BATH 2 CAR 2

Internal: 193 m<sup>2</sup> | External: 40 m<sup>2</sup> | Approx Total: 233 m<sup>2</sup>

Whilst every attempt has been made to ensure the accuracy of the floor plan contained here, measurements of doors, windows, rooms and any other item are approximate and no responsibility is taken for any error, omission, or misstatement. This plan is for illustrative purposes only and should only be used as such by any prospective purchaser.

